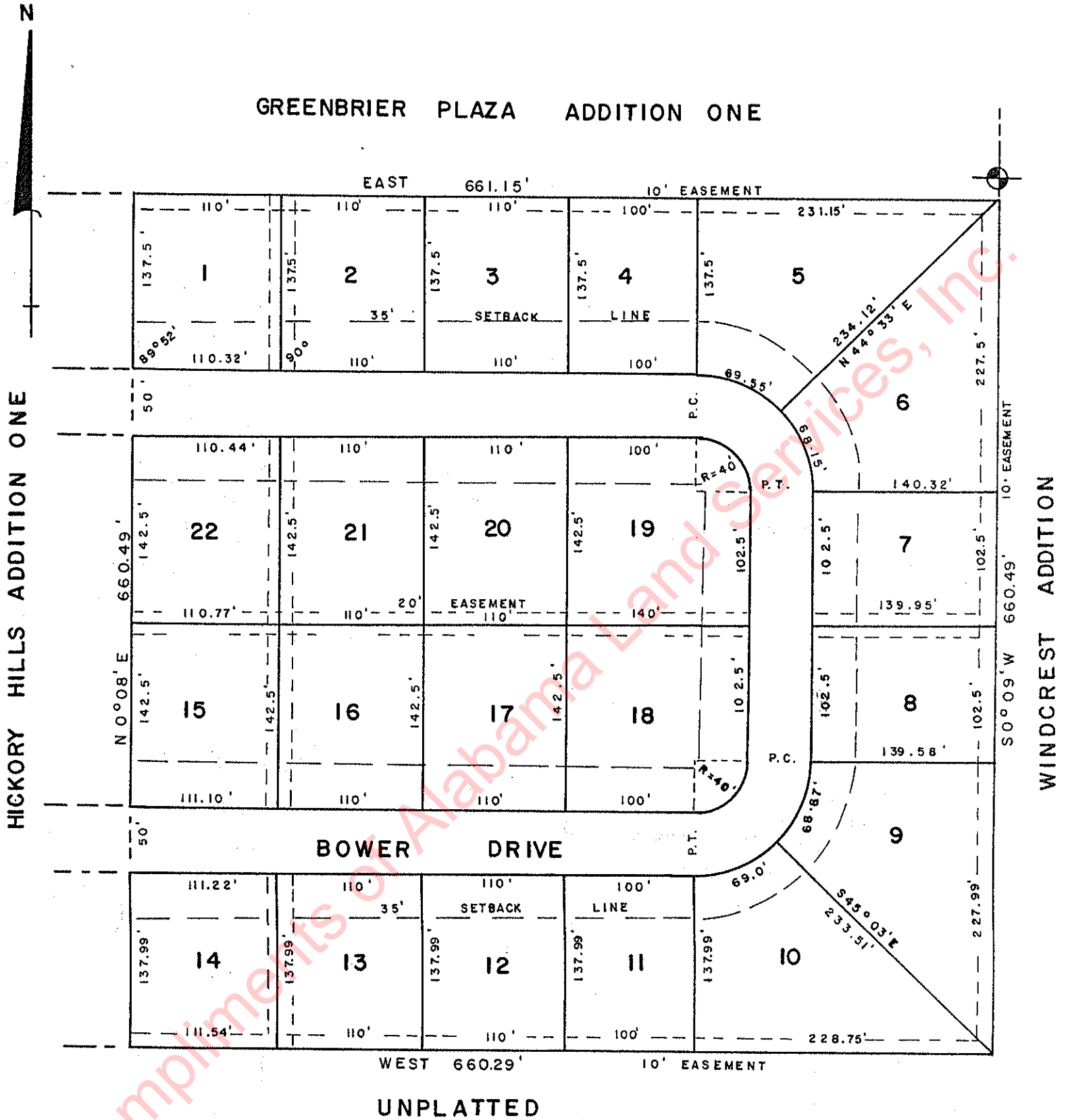


GREENBRIER PLAZA ADDITION ONE



Plat showing ARLINGTON HILLS according to the plat thereof as recorded in the Office of the Judge of Probate, Lauderdale County, Alabama in Plat Book 4 at Page 72.

ARLINGTON HILLS

FLORENCE, ALABAMA

STATE OF ALABAMA
COUNTY OF LAUDERDALE

I, William A. White, a Registered Engineer A Land Surveyor in said State and County, hereby certify that the attached map or plat designated "ARLINGTON HILLS," is a true and correct map or plat of a survey made by me and shows the name and lengths and angles of all public ways and the lengths and angles of all lot lines together with the number of each lot and showing the relation of said survey to the original survey of public lands in the State of Alabama.

Given my hand and seal this the 10th day of January, 1967.

/s/ William A. White, Engineer
William A. White, Engineer and Land
Surveyor, Alabama Reg. No. 2202

Acknowledged in General Code Form by William A. White, before Janice Behel, a Notary Public for Lauderdale County, Alabama, on January 10, 1967.

STATE OF ALABAMA
COUNTY OF LAUDERDALE

The undersigned, Barney B. Welch Builders, Incorporated, owner of the property shown hereon and designaged "ARLINGTON HILLS," accept and expressly adopt said plat as the official record of same, and in consideration of the respective benefits to accrue to us, our successors, heirs and assigns, do hereby grant, and convey to the City of Florence, Alabama, its successors and assigns, an easement or right of way over, under, across and above the streets and public roads and alleys shown hereon for electric, telephone, water and gas and sewer services and other right of ways as show conveying the privileges necessary for the installation and maintenance of such utility over the respective right of way, including the right to cut and clear trees or parts thereof or other objects that may injure or endanger overhead lines.

Given my hand at Florence, Alabama, this the 12th day of January, 1967.

BARNEY B. WELCH BUILDERS, INC.

/s/ Barney B. Welch
President

Acknowledged in Code Form by Barney B. Welch, as President of Barney B. Welch Builders, Inc., a corporation, before Janice Behel, a Notary Public for Lauderdale County, Alabama, on January 12, 1967.

STATE OF TENNESSEE
COUNTY OF DAVIDSON

The undersigned, Clyde E. Carter and Edith M. Carter, as mortgagees of a portion of the property shown hereon and designated as "ARLINGTON HILLS," accept the said plat as an official record of same.

Given under our hand and seal, this 27 day of January, 1967.

/s/ Clyde E. Carter
Clyde E. Carter

/s/ Edith M. Carter
Edith M. Carter

Acknowledged in General Code Form by Clyde E. Carter and Edith M. Carter, before Mary Ann Nicholas, a Notary Public for Davidson County, Tennessee, on January 27, 1967. No Seal.

Page #2, continued.

STATE OF ALABAMA
COUNTY OF LAUDERDALE

Approved for recording by the City Engineer of the City of Florence, Alabama, this the 12 day of Jan., 1967.

/s/ H.M. Hargett
City Engineer

STATE OF ALABAMA
COUNTY OF LAUDERDALE

Approved for recording by the Planning Commission of the City of Florence, Alabama, this the 12 day of Jan., 1967.

/s/ Allen M. Northington
Chairman

STATE OF ALABAMA
COUNTY OF LAUDERDALE

Approved for recording by the Board of Commissioners of the City of Florence, Alabama, this the 18th day of January, 1967.

/s/ Ben H. Craig, Jr.
Mayor

STATE OF ALABAMA
COUNTY OF LAUDERDALE

I, Estes R. Flynt, as Judge of Probate of Lauderdale County, Alabama, hereby certify that the map and plat shown hereon as "ARLINGTON HILLS," was filed in my office for recording and was duly recorded in Plat Book 4 on Page 72 this the 31 day of January, 1967.

/s/ Estes R. Flynt
Judge of Probate