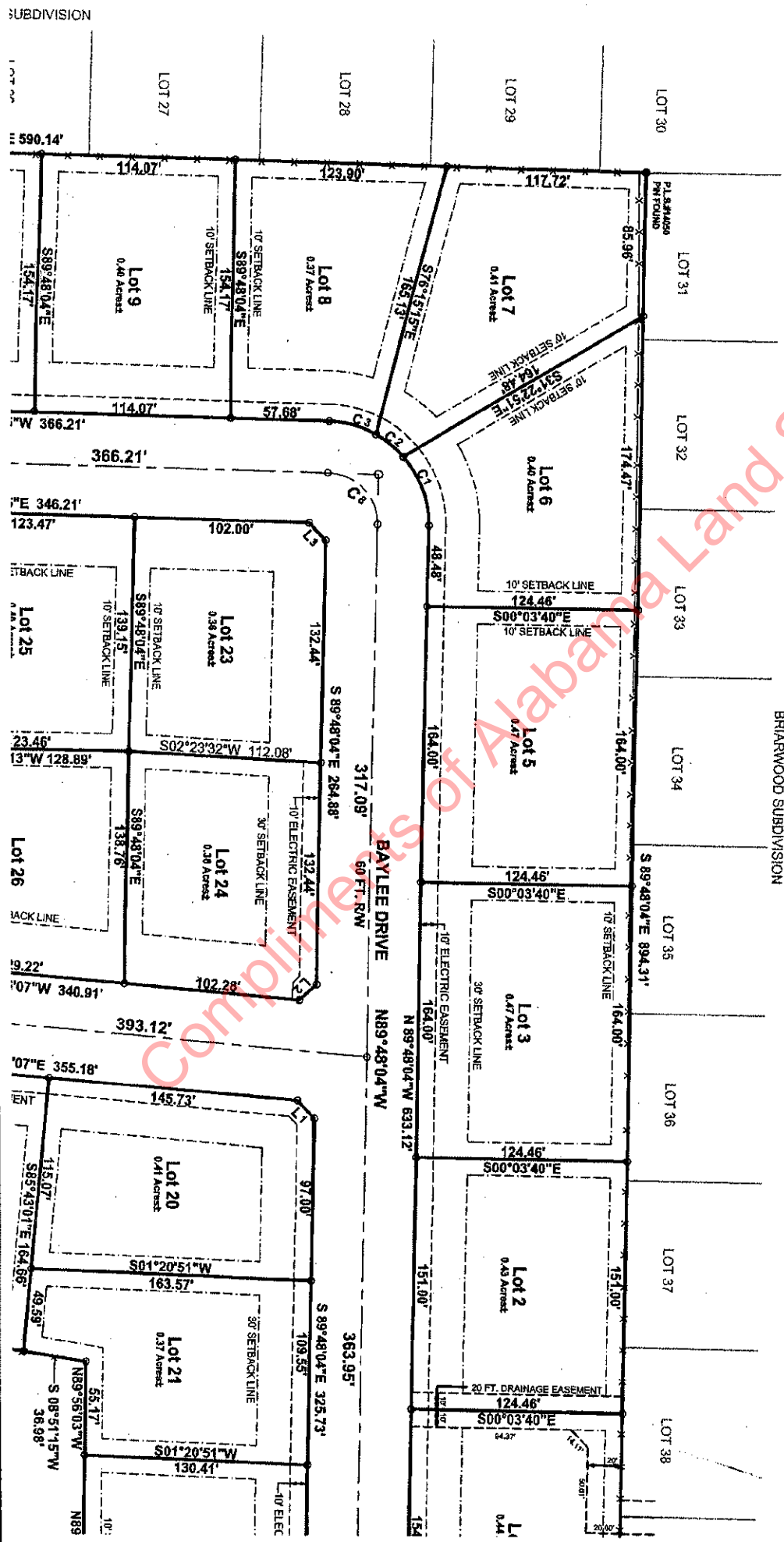


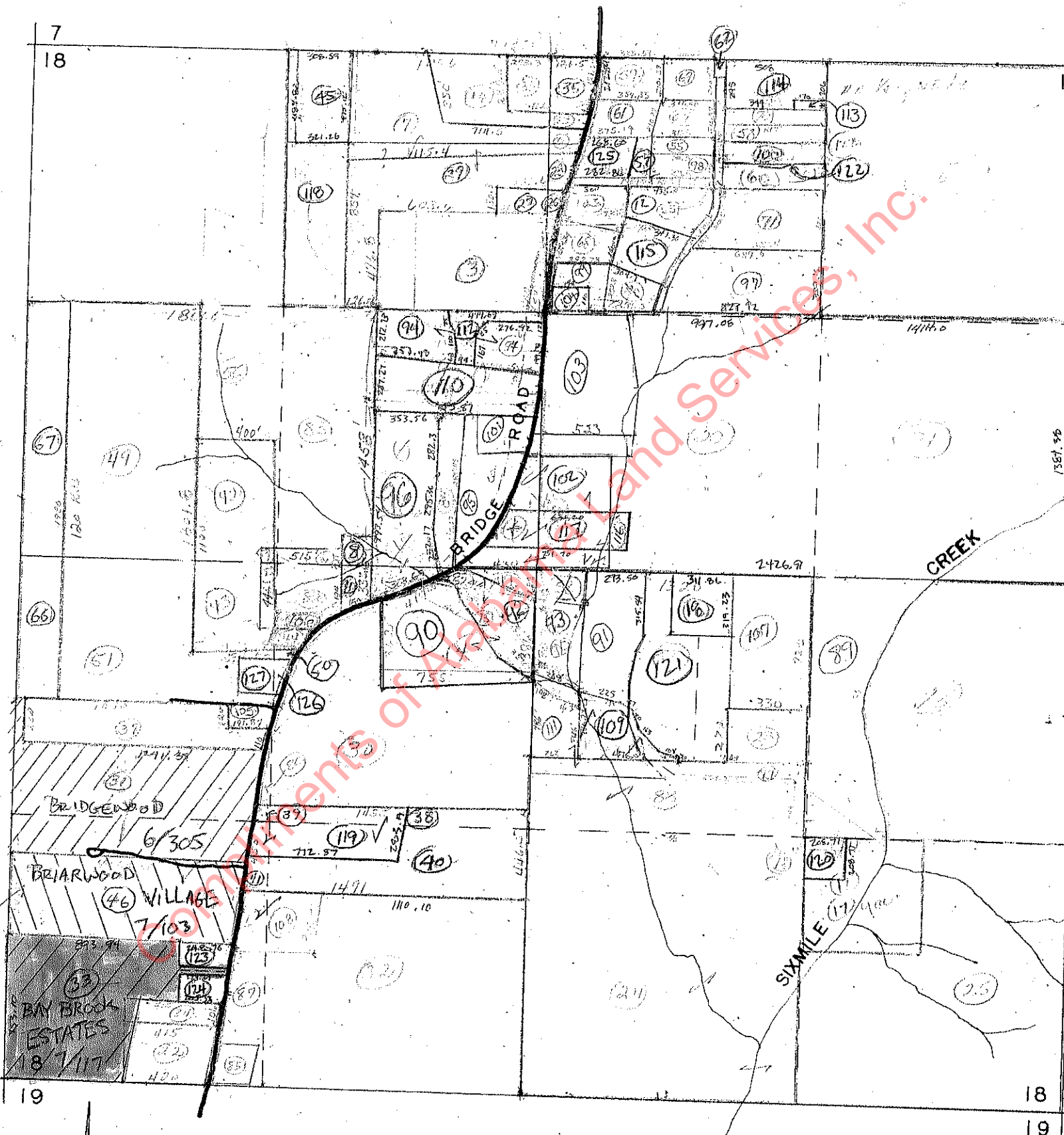
PLATS 7 117
 Recorded In Above Book and Page
 10/24/2006 11:52:05 AM
 Dewey D. Mitchell
 Probate Judge
 Lauderdale County, AL

Recording Fee 140.00
 TOTAL 140.00



BAYBROOK ESTATES
 A FINAL PLAT
 FOR BRIAN TIPPER
 A TRACT OF LAND IN SECTION 18, TOWNSHIP 2 SOUTH, RANGE 9 WEST,
 IN LAUDERDALE COUNTY, ALABAMA.

Copyright © of Alabama Land Services, Inc.



Plat showing the Section 18, Township 2, Range 9, West, Lauderdale County, Alabama.

TAKEN from an aerial photograph dated April 1, 1954.

TRACT in RED is the tract described in the Caption.

