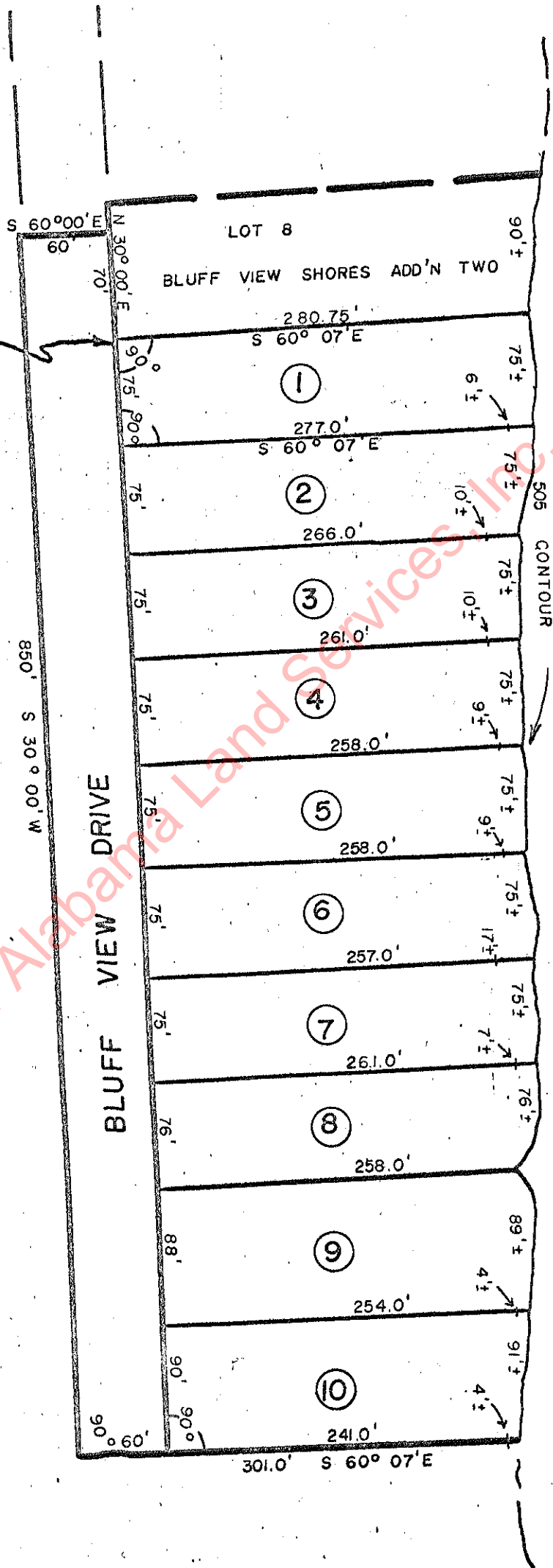
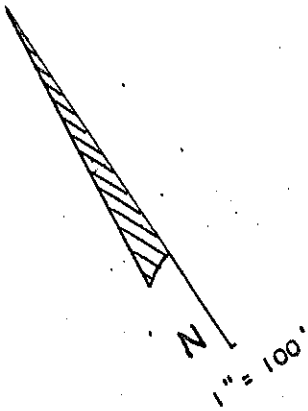


THIS POINT 3323.06' SOUTH OF
 AND 417.36' EAST OF NW COR.
 NE 1/4 - NE 1/4 SEC 32, TP 1S,
 R 10 W, LAUDERDALE CO., ALA.



Plat showing, at reduced scale, BLUFF VIEW SHORES ADDITION THREE, in Lauderdale County, Alabama, according to the plat thereof recorded in the Office of the Judge of Probate of said County in Plat Book 4, at Page 125.