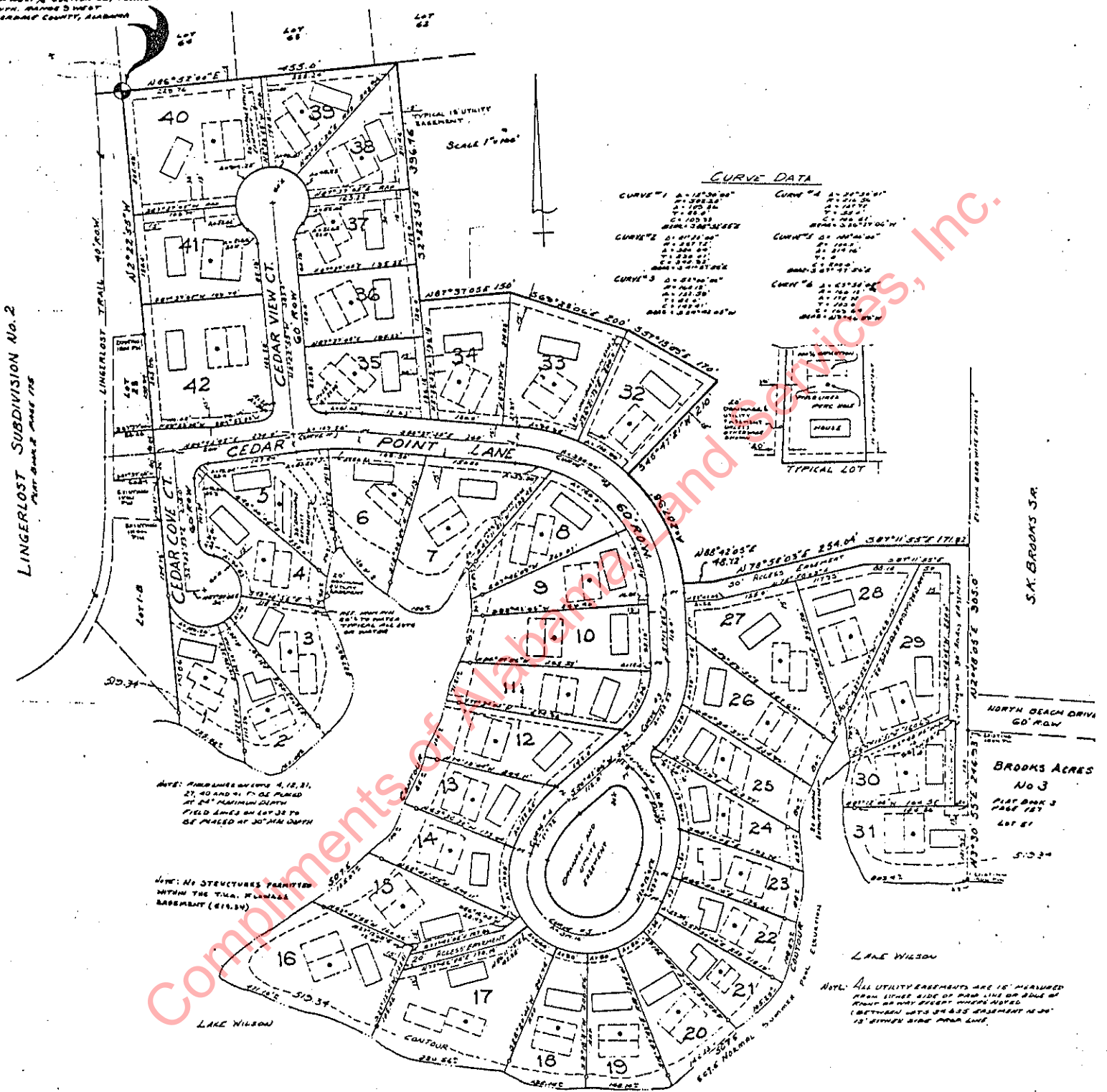


EAST RIDGE ESTATES ADD No. 2
PLAT BOOK 5 PAGE 51

17th WEST CORNER, SOUTH WEST 1/4, SECTION 34, TOWNSHIP 10N, RANGE 5 WEST, BARBARA COUNTY, ALABAMA

LINGERLOST SUBDIVISION No. 2
PLAT BOOK 2 PAGE 175



Plat showing, at reduced scale, CEDAR COVE, according to the plat thereof recorded in the office of the Judge of Probate of Lauderdale County, Alabama, in Plat Book 5, Page 105.