

Plat showing fractional Section 28, Township 3, Range 7, as taken from an aerial photograph dated March 7, 1954, with section lines placed by inspection of obvious property lines and terrain features.

Added hereto are tract lines of conveyances into and from the United States and the approximate location of the former shore line.

P

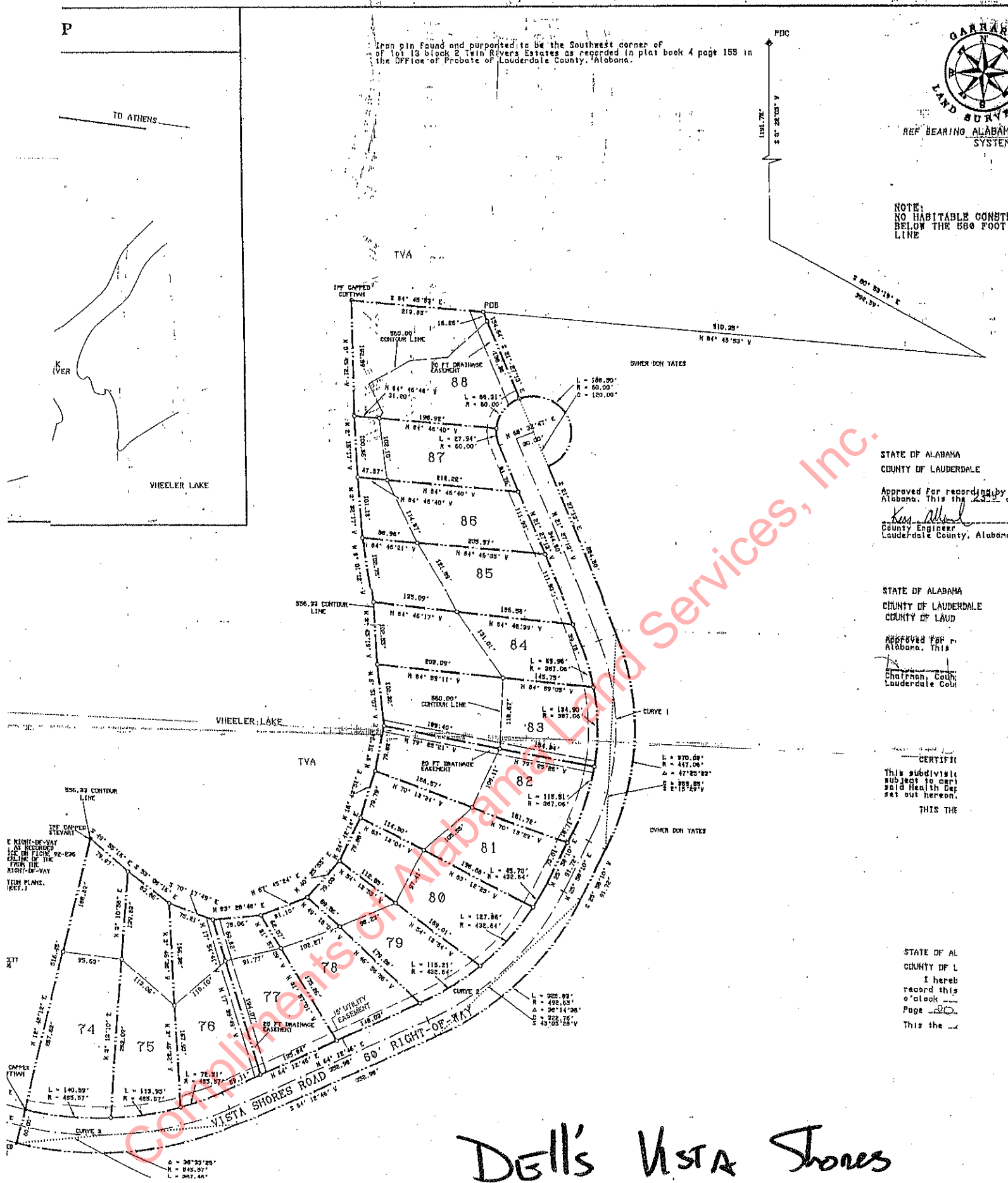
Iron pin found and purported to be the Southwest corner of lot 13 block 2 Twin Rivers Estates as reported in plat book 4 page 155 in the Office of Probate of Lauderdale County, Alabama.



NOTE: NO HABITABLE CONSTRUCTION BELOW THE 500 FOOT LINE

TO ATHENS

PBC



STATE OF ALABAMA
COUNTY OF LAUDERDALE
Approved for recording by
Alabama, this the 23rd day of
July 1960
County Engineer
Lauderdale County, Alabama

STATE OF ALABAMA
COUNTY OF LAUDERDALE
APPROVED FOR RECORDING BY
Alabama, this the 23rd day of
July 1960
Chairman, Council
Lauderdale County, Alabama

CERTIFIED
This subdivision is
subject to certain
said Health Dept
set out hereon.
THIS THE

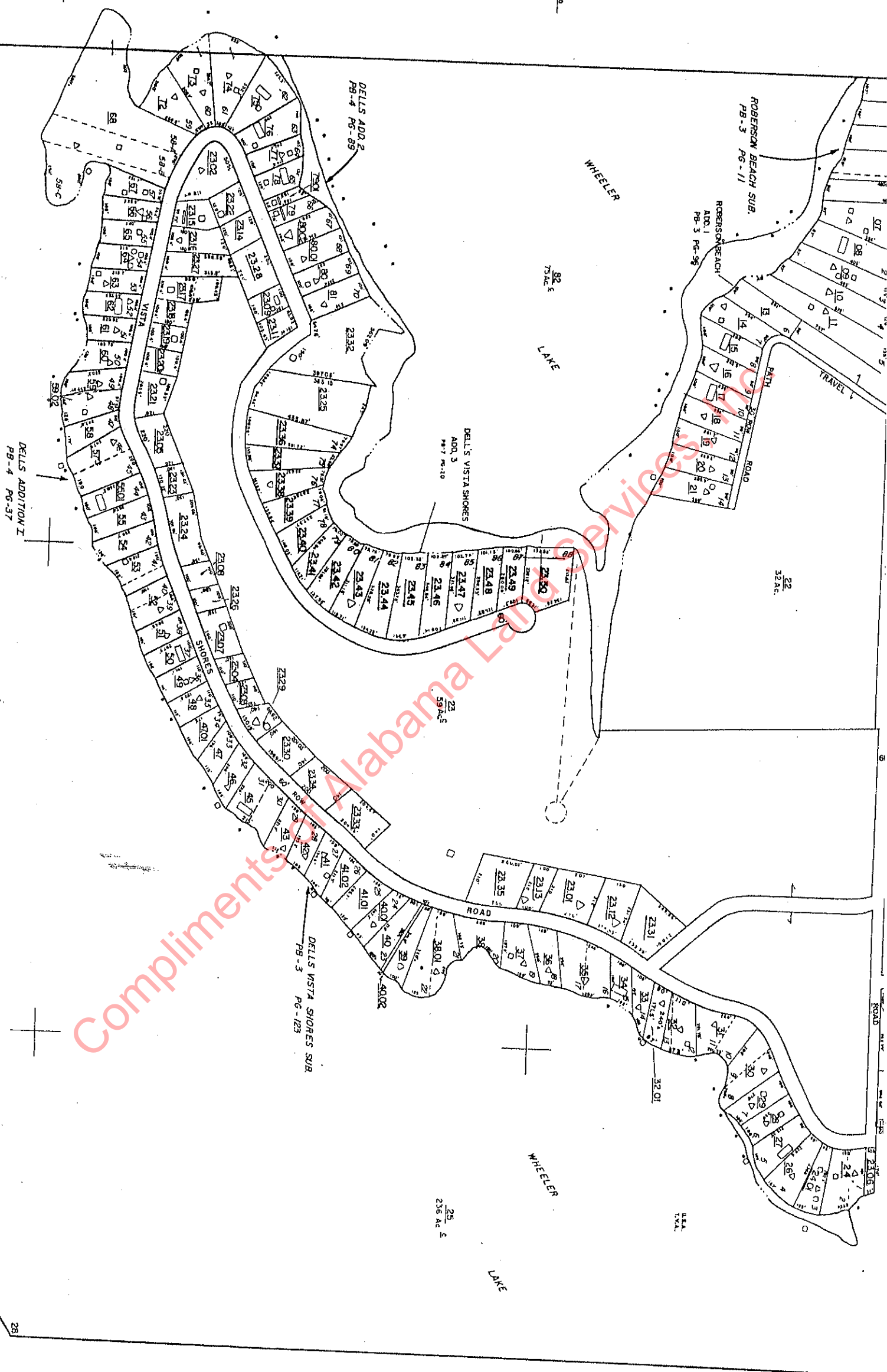
STATE OF ALABAMA
COUNTY OF LAUDERDALE
I hereby
record this
of book
Page 20
This the

Dell's Vista Shores
ADDITION # 3

7-20

L.L. 738,000

L.L. 738,000



DELLS ADDITION I
PG-4 PG-37

DELLS VISTA SHORES SUB
PG-3 PG-123

25
236 AC. ±

22
322 AC.

24
236 AC.