

FOX RUN ADDITION

231

AMENDED
PLAT

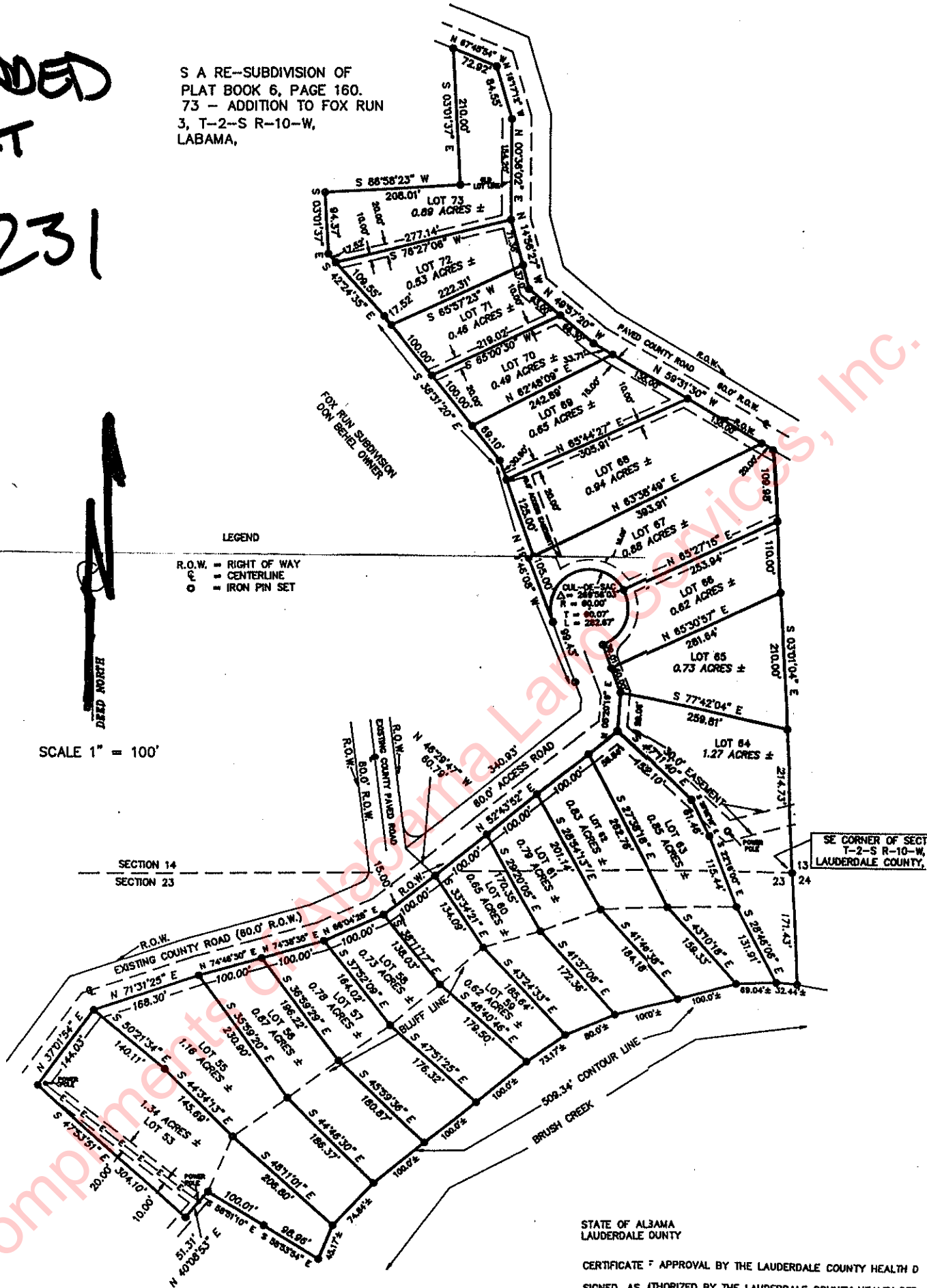
6-231

S A RE-SUBDIVISION OF
PLAT BOOK 6, PAGE 160.
73 - ADDITION TO FOX RUN
3, T-2-S R-10-W,
LABAMA,



SCALE 1" = 100'

LEGEND
R.O.W. = RIGHT OF WAY
C = CENTERLINE
O.P. = IRON PIN SET



STATE OF ALABAMA
LAUDERDALE COUNTY

CERTIFICATE OF APPROVAL BY THE LAUDERDALE COUNTY HEALTH DEPARTMENT

SIGNED, AS AUTHORIZED BY THE LAUDERDALE COUNTY HEALTH DEPARTMENT, AND HEREBY APPROVED WITHIN PLAT FOR THE RECORDING OF SAME PROBATE CLERK OF LAUDERDALE COUNTY, ALABAMA, THIS THE 10th DAY OF October 1986.

STATE OF ALABAMA
COUNTY OF LAUDERDALE

SURVEYOR'S CERTIFICATE AND DESCRIPTION OF LAND PLOTTED

I, EDWIN M. SPARKMAN, A REGISTERED SURVEYOR OF ALABAMA, HEREBY CERTIFY THAT I HAVE SURVEYED THE PROPERTY OF LOTS 53 THROUGH 73, IN THE ADDITION TO FOX RUN, A SUBDIVISION, SITUATED IN LAUDERDALE COUNTY, ALABAMA, AND DESCRIBED AS FOLLOWS:

BEGINNING AT THE SE CORNER OF SECTION 14, T-2-S R-10-W, LAUDERDALE COUNTY, ALABAMA; THENCE RUN N 03° 01' 04" W 641.71' TO A POINT ON THE SOUTH RIGHT OF WAY OF A PAVED COUNTY ROAD; THENCE RUN N 89° 31' 30" W, 303.71' TO A POINT; THENCE RUN N 49° 37' 20" W, 129.2' TO A POINT; THENCE RUN N 14° 44' 27" W, 108.35' TO A POINT; THENCE RUN N 60° 24' 52" E, 184.20' TO A POINT; THENCE RUN N 14° 17' 12" W, 81.86' TO A POINT; THENCE RUN N 61° 49' 24" W, 72.22' TO A POINT; THENCE LEAVING SAID RIGHT OF WAY RUN S 03° 01' 37" E, 210.0' TO A POINT; THENCE RUN S 84° 58' 22" W, 208.01' TO A POINT; THENCE RUN S 03° 01' 37" W, 84.37' TO A POINT; THENCE RUN S 43° 24' 25" E, 127.07' TO A POINT; THENCE RUN S 28° 31' 20" E, 288.87' TO A POINT; THENCE RUN S 18° 48' 00" E, 288.95' TO A POINT; THENCE RUN ALONG A CURVE TO THE RIGHT HAVE A RADIUS OF 60.0' A DISTANCE OF 262.67' TO A POINT ON THE EAST MARGIN OF A 60.0' ROAD; THENCE RUN ALONG SAID MARGIN S 18° 48' 00" E, 78.01' TO A POINT; THENCE RUN S 08° 22' 18" W, 59.08' TO A POINT; THENCE RUN S 82° 53' 52" W, 458.54' TO A POINT; THENCE RUN S 66° 04' 25" W, 100.0' TO A POINT; THENCE RUN S 74° 49' 30" W, 100.0' TO A POINT; THENCE RUN S 74° 49' 30" W, 100.0' TO A POINT; THENCE RUN S 57° 01' 54" W, 54° 01' 10" E, 100.01' TO A POINT; THENCE RUN S 58° 53' 34" E, 98.86' TO A POINT ON THE 500.34' CONTOUR LINE OF BRUSH CREEK; THENCE RUNNING IN A NORTHEASTERLY DIRECTION ALONG SAID CONTOUR LINE 174.88' PLUS OR MINUS TO A POINT; THENCE LEAVING SAID CONTOUR LINE RUN N 03° 01' 04" W, 171.43' TO THE AND THE NE 1/4 OF SECTION 23, T-2-S R-10-W, LAUDERDALE COUNTY, ALABAMA. PROPERTY IS SUBJECT ALL EASEMENTS AND RESTRICTIONS OF RECORD.

AND THAT THE PLAT OR MAP CONTAINED HEREIN IS A TRUE AND CORRECT MAP SHOWING THE SUBDIVISION INTO WHICH THE PROPERTY DESCRIBED IS DIVIDED, GIVING THE LENGTH AND BEARINGS OF THE BOUNDARIES OF EACH LOT AND ITS NUMBER AND SHOWING THE STREETS, ALLEYS, AND PUBLIC GROUNDS AND GIVING BEARINGS, LENGTH, WIDTH, AND NAME OF THE STREETS. SAID MAP FURTHER SHOWS THE RELATION OF THE LAND SO PLATTED TO THE GOVERNMENT SURVEY; AND THAT PERMANENT MONUMENTS HAVE BEEN PLACED AT POINTS MARKED THEREON AS SHOWN.

WITNESS MY HAND THIS THE 10th DAY OF October, 1986.

STATE OF ALABAMA
LAUDERDALE

OFFICE OF THE

CLERK

I HEREBY CERTIFY THIS THE 10th DAY OF October, 1986.

RECORDING

DEDICATION

Edwin M. Sparkman, PROPRIETOR(S), HAVE CAUSED THE WITHIN PLAT TO BE SURVEYED, LAID OUT AND PLATTED TO IN ADDITION, A SUBDIVISION, A PART OF LAUDERDALE COUNTY, THE AS SHOWN ARE HEREBY SE OF THE PUBLIC.

IN THE PRESENCE OF:

[Signature]
[Signature]
Reada Donald Behel
PROPERTY OWNER
Heather J. Behel
PROPERTY OWNER

ACKNOWLEDGEMENT

A NOTARY PUBLIC IN AND FOR SAID COUNTY, IN SAID CERTIFY THAT *Reada Donald Behel* WHOSE NAME AS HE *Fox Run Addition Subdivision* SIGNED TO THE PLAT, AND WHO IS KNOWN TO ME, ACKNOWLEDGED BEFORE ME, BEING INFORMED OF THE CONTENTS OF THE INSTRUMENT, AND WITH FULL AUTHORITY, EXECUTED THE SAME AS THE ACT OF SAID CORPORATION.

WITNESS MY HAND AND OFFICIAL SEAL THIS 11th DAY OF October, 1986.

STATE OF ALABAMA