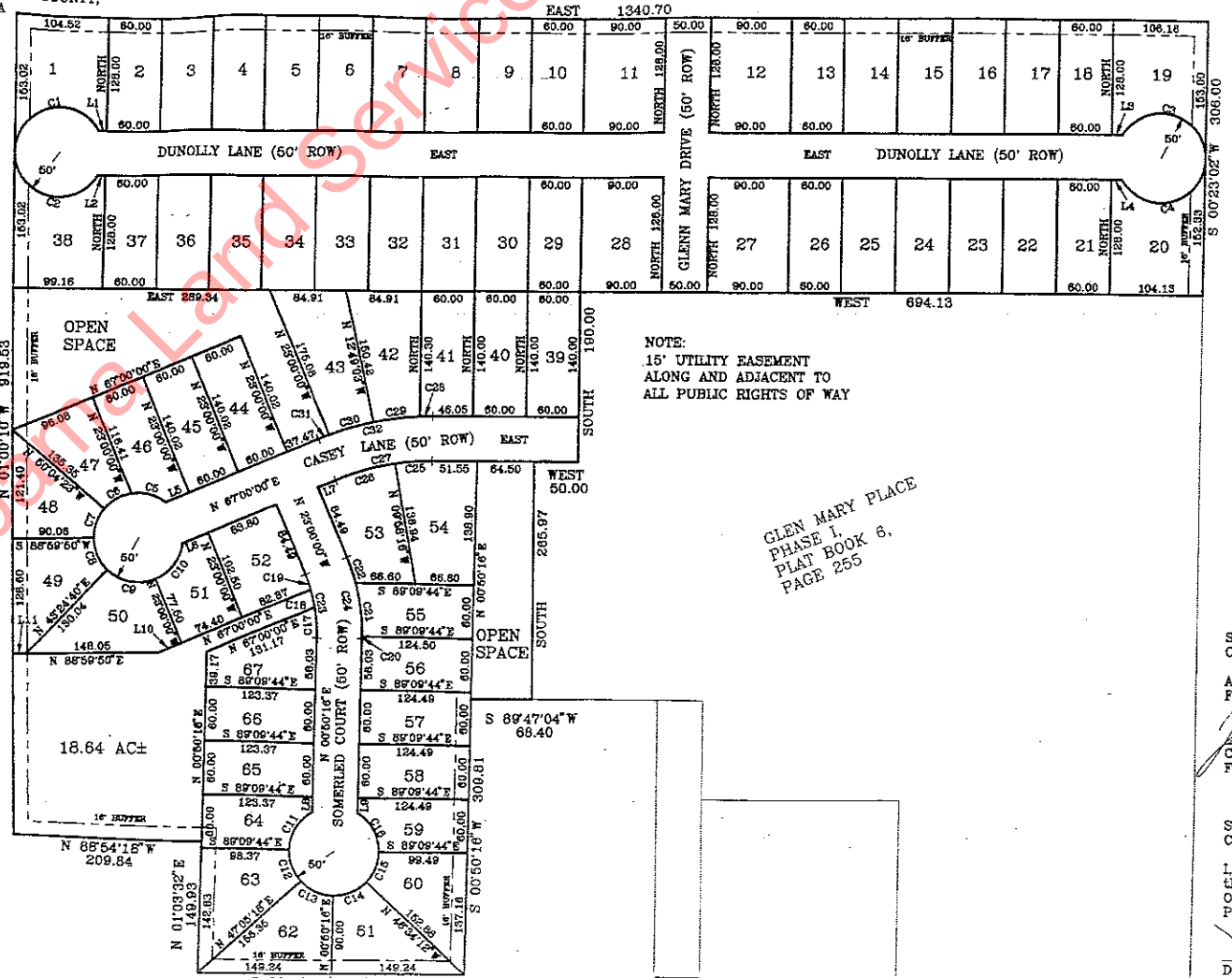


GLENN MARY PLACE PHASE II

6-348

NW CORNER OF THE
SW 1/4 OF THE
SE 1/4 OF SECTION
22, T-2-S, R-11-W,
LAUDERDALE COUNTY,
ALABAMA



NOTE:
15' UTILITY EASEMENT
ALONG AND ADJACENT TO
ALL PUBLIC RIGHTS OF WAY

GLENN MARY PLACE
PHASE I,
PLAT BOOK 6,
PAGE 255

Compliments of Alabama Land Services, Inc.

STATE OF
COUNTY OF
Florence,
Approved:
[Signature]
Chairman
Florence

STATE OF
COUNTY OF
I, Dewey D.
that the
Office of
Page 348

Dewey D.
Judge