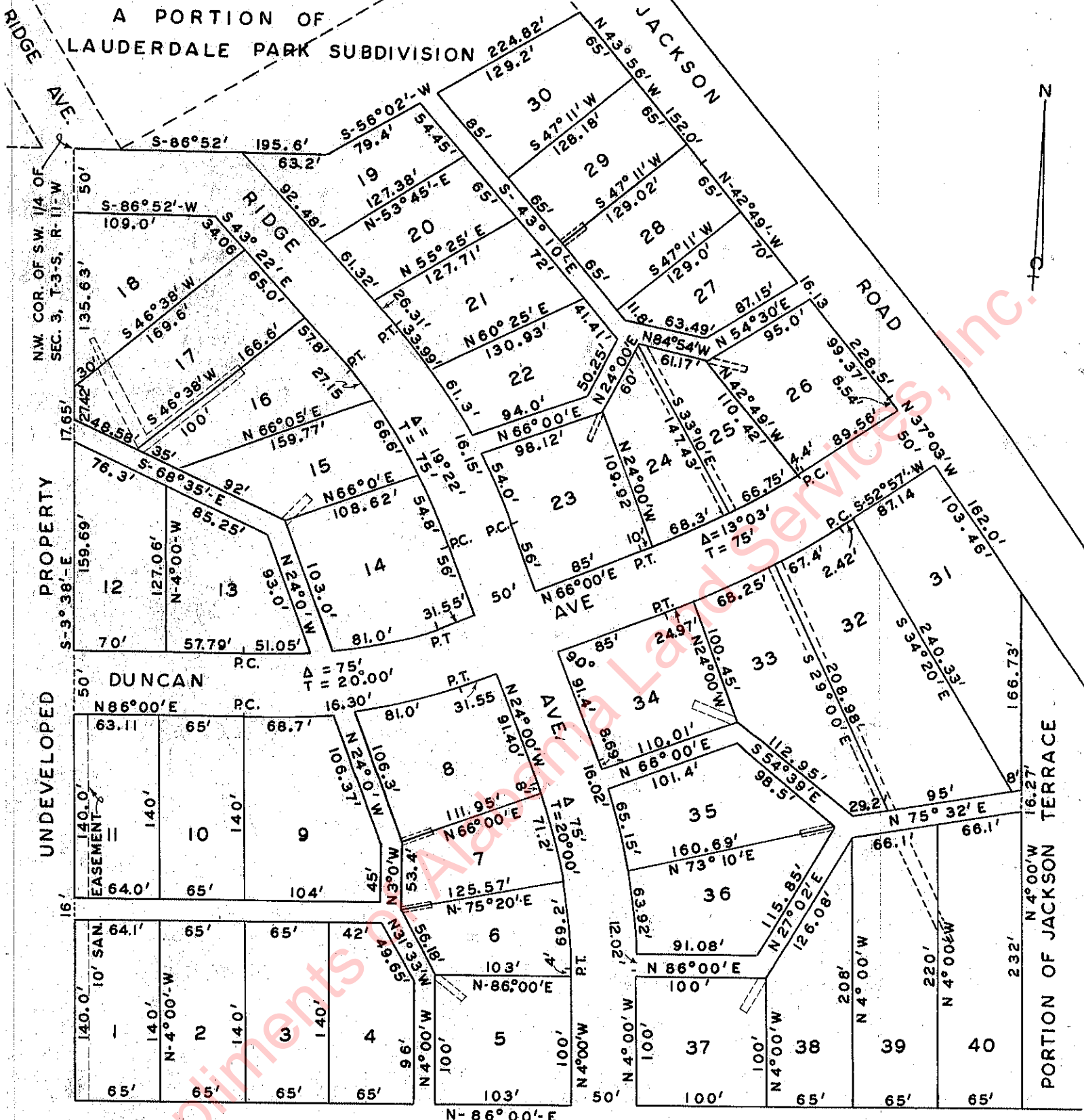


HOMWOOD PARK  
SUBDIVISION  
FLORENCE, ALABAMA



FLORENCE COURT

PORTION OF MELVILLE TERRACE

Scale: 1" = 100'

LEGEND

- 10' Sanitary Sewer and Utility Easement - - - - -
- 4' x 25' Anchor Easement - - - - -

Plat showing HOMWOOD PARK SUBDIVISION in the City of Florence, Alabama, according to the plat thereof recorded in the office of the Judge of Probate of Lauderdale County, Alabama in New Plat Book No. 2, at page 183.

HOMWOOD PARK SUBDIVISION  
FLORENCE, ALABAMA

STATE OF ALABAMA  
LAUDERDALE COUNTY

I, the undersigned, W. M. Paxton, Jr., a Registered Engineer and Land Surveyor, hereby certify that I have surveyed that certain tract of land situated in the City of Florence, Lauderdale County, Alabama, known and described as follows, to wit: A portion of land being and lying in Section 3, T-3-S, R-11W, Lauderdale County, Alabama, and being more fully described as follows: Beginning at the N.W. corner of the S.W.1/4, Section 3, T-3-S, R-11-W, thence S-3° 38' E a distance of 736.39 ft. to a point on the North right-of-way line of Florence Court; thence N-86° 00' E along the North right-of-way line of Florence Court a distance of 724.0 ft. to a point; thence N-4° 00' W a distance of 415.0 ft. to a point on the S.W. right-of-way line of Jackson Road; thence N-37° 03' W along Jackson Road a distance of 162.0 ft. to a point; thence N-42° 49' W a distance of 228.5 ft. to a point; thence N-43° 56' W a distance of 152.0 ft. to a point; thence S56° 02' W a distance of 224.82 ft. to a point; thence S-86° 52' W a distance of 195.6 ft. to the point of beginning, said tract of land containing 11.71 acres more or less. That on behalf of Homewood Development Company, Inc., a corporation, I have subdivided the above described lands into town lots, showing the streets, alleys and public grounds therein, giving the bearings, length, width, and name of each street, as well as the number of each lot and block, and I further certify that the attached map and plat is a true and correct map and plat of said subdivision of the above described property, and shows the proper relation of the said lands so mapped and platted to the government survey.  
Given under my hand and seal at Florence, Alabama, this 15th day of January, 1955.

W. M. Paxton, Jr.

W. M. Paxton, Jr.

Registered Engineer & Land Surveyor  
Alabama Certificate No. 1627

STATE OF ALABAMA  
LAUDERDALE COUNTY

The undersigned Homewood Development Company, Inc., an Alabama Corporation, as owner of the property shown hereon and mapped, platted and designated as "Homewood Park Subdivision", hereby accepts and expressly adopts said map and plat as an official record of same, and in consideration of the respective benefits to accrue to said corporation, its successors and assigns, does hereby grant and convey to the City of Florence, Alabama, its successors and assigns, the following: The streets and public alleys shown hereon for electric, telephone, gas, water and sewer services, and any other utility or public services furnished or provided by said municipal corporation, together with such privileges necessary for the installation and maintenance of such utilities or services over the respective rights of way, including the right to cut and clear trees, or parts of trees or other objects that may injure or endanger overhead lines.  
Given at Florence, Alabama this 15 day of January, 1955.

Homewood Development Company, Inc.,  
a Corporation

ATTEST:

E. E. Haltom, Jr.

Its Secretary-Treasurer

By Melvin I. Glazier

Its President

(NEXT PAGE)

Page #2, continued.

Acknowledged in Code Form for corporation by Melvin I. Glazier, as President of Homewood Development Company, Inc., a corporation, before Marie Wright, Notary Public for Lauderdale County, Alabama. This 15 day of January, 1955. Seal.

STATE OF ALABAMA  
LAUDERDALE COUNTY

Approved for recording by the Board of Commissioners of the City of Florence, Alabama, this 15th day of January, 1955.

Walter N. Harrison  
Mayor

STATE OF ALABAMA  
LAUDERDALE COUNTY

Approved for recording by the City Engineer of the City of Florence, Alabama this 15 day of January, 1955.

William A. White  
City Engineer

STATE OF ALABAMA  
LAUDERDALE COUNTY

Approved for recording by the Planning Commission of the City of Florence, Alabama this 15th day of January, 1955.

M. Jerome Carter  
Chairman

STATE OF ALABAMA  
LAUDERDALE COUNTY

I, the undersigned Herman K. Longshore, as Judge of Probate of Lauderdale County, Alabama, do hereby certify that the map and plat shown hereon of Homewood Park Subdivision was filed in my office for recording and was duly recorded in New Plat Book 2 on page 183 this 15 day of January, 1955.

Herman K. Longshore  
Judge of Probate