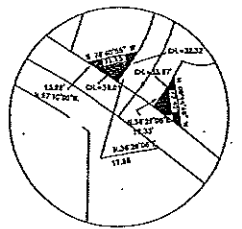
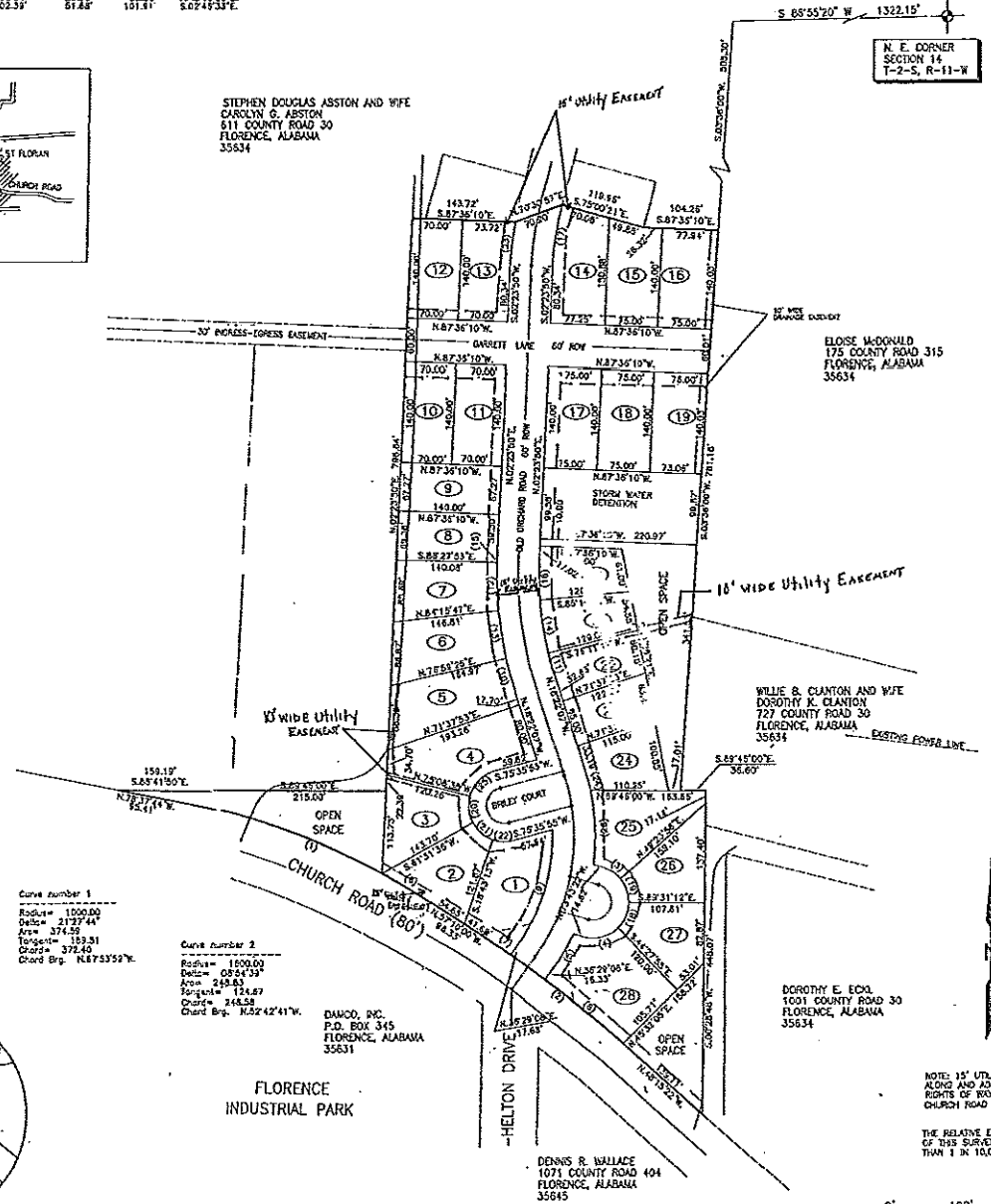
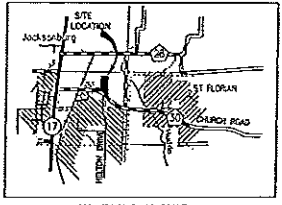


7/166

CURVE TABLE

NO.	RADIUS	DELTA	ARC	TANGENT	CHORD	CHORD BEARING
1	1000.00	23.74	16.76	3.75	13.27	S 87°09'12" W
2	1000.00	23.74	16.76	3.75	13.27	S 87°09'12" W
3	1000.00	23.74	16.76	3.75	13.27	S 87°09'12" W
4	1000.00	23.74	16.76	3.75	13.27	S 87°09'12" W
5	1000.00	23.74	16.76	3.75	13.27	S 87°09'12" W
6	1000.00	23.74	16.76	3.75	13.27	S 87°09'12" W
7	1000.00	23.74	16.76	3.75	13.27	S 87°09'12" W
8	1000.00	23.74	16.76	3.75	13.27	S 87°09'12" W
9	1000.00	23.74	16.76	3.75	13.27	S 87°09'12" W
10	1000.00	23.74	16.76	3.75	13.27	S 87°09'12" W
11	1000.00	23.74	16.76	3.75	13.27	S 87°09'12" W
12	1000.00	23.74	16.76	3.75	13.27	S 87°09'12" W
13	1000.00	23.74	16.76	3.75	13.27	S 87°09'12" W
14	1000.00	23.74	16.76	3.75	13.27	S 87°09'12" W
15	1000.00	23.74	16.76	3.75	13.27	S 87°09'12" W
16	1000.00	23.74	16.76	3.75	13.27	S 87°09'12" W
17	1000.00	23.74	16.76	3.75	13.27	S 87°09'12" W
18	1000.00	23.74	16.76	3.75	13.27	S 87°09'12" W
19	1000.00	23.74	16.76	3.75	13.27	S 87°09'12" W
20	1000.00	23.74	16.76	3.75	13.27	S 87°09'12" W
21	1000.00	23.74	16.76	3.75	13.27	S 87°09'12" W
22	1000.00	23.74	16.76	3.75	13.27	S 87°09'12" W
23	1000.00	23.74	16.76	3.75	13.27	S 87°09'12" W
24	1000.00	23.74	16.76	3.75	13.27	S 87°09'12" W
25	1000.00	23.74	16.76	3.75	13.27	S 87°09'12" W
26	1000.00	23.74	16.76	3.75	13.27	S 87°09'12" W
27	1000.00	23.74	16.76	3.75	13.27	S 87°09'12" W
28	1000.00	23.74	16.76	3.75	13.27	S 87°09'12" W
29	1000.00	23.74	16.76	3.75	13.27	S 87°09'12" W
30	1000.00	23.74	16.76	3.75	13.27	S 87°09'12" W
31	1000.00	23.74	16.76	3.75	13.27	S 87°09'12" W
32	1000.00	23.74	16.76	3.75	13.27	S 87°09'12" W
33	1000.00	23.74	16.76	3.75	13.27	S 87°09'12" W
34	1000.00	23.74	16.76	3.75	13.27	S 87°09'12" W
35	1000.00	23.74	16.76	3.75	13.27	S 87°09'12" W
36	1000.00	23.74	16.76	3.75	13.27	S 87°09'12" W
37	1000.00	23.74	16.76	3.75	13.27	S 87°09'12" W
38	1000.00	23.74	16.76	3.75	13.27	S 87°09'12" W
39	1000.00	23.74	16.76	3.75	13.27	S 87°09'12" W
40	1000.00	23.74	16.76	3.75	13.27	S 87°09'12" W
41	1000.00	23.74	16.76	3.75	13.27	S 87°09'12" W
42	1000.00	23.74	16.76	3.75	13.27	S 87°09'12" W
43	1000.00	23.74	16.76	3.75	13.27	S 87°09'12" W
44	1000.00	23.74	16.76	3.75	13.27	S 87°09'12" W
45	1000.00	23.74	16.76	3.75	13.27	S 87°09'12" W
46	1000.00	23.74	16.76	3.75	13.27	S 87°09'12" W
47	1000.00	23.74	16.76	3.75	13.27	S 87°09'12" W
48	1000.00	23.74	16.76	3.75	13.27	S 87°09'12" W
49	1000.00	23.74	16.76	3.75	13.27	S 87°09'12" W
50	1000.00	23.74	16.76	3.75	13.27	S 87°09'12" W



Curve number 1
 Radius= 1000.00
 Delta= 23.74
 Arc= 16.76
 Tangent= 3.75
 Chord= 13.27
 Chord Bp. N 87°09'12" W

Curve number 2
 Radius= 1000.00
 Delta= 23.74
 Arc= 16.76
 Tangent= 3.75
 Chord= 13.27
 Chord Bp. N 87°09'12" W

DAICO, INC.
 P.O. BOX 345
 FLORENCE, ALABAMA
 35631

DENNIS R. WALLACE
 1071 COUNTY ROAD 404
 FLORENCE, ALABAMA
 35645

NOTE: 15' UTILITY EASEMENTS
 ALONG AND ADJACENT TO ALL PUBLIC
 RIGHTS OF WAY, INCLUDING NORTH SIDE OF
 CHURCH ROAD.
 THE RELATIVE ERROR OF CLOSEURE
 OF THIS SURVEY IS LESS
 THAN 1 IN 10,000



STATE OF ALABAMA
 COUNTY OF LAUDERDALE

I, Ronnie E. Wighton, a registered land surveyor in said State and County, hereby certify that I have surveyed that certain tract of land designated as ORCHARD MILLS PHASE I, on the enclosed plot I have subdivided said lots showing the easements thereon, giving the bearings and lengths of each line, as well as the size of the tract. I further certify that the enclosed plot is a true and correct plot of said subdivision and shows the proper relationship to the U.S. Government Survey of Public Lands in the State of Alabama.
 I hereby certify that all parts of this survey and drawing have been completed in accordance with the current requirements of the Standards of Practice for Surveying in the State of Alabama to the best of my knowledge, information and belief.
 Given under my hand and seal, this 17th day of August, 2008.



Ronnie E. Wighton, P.L.S.
 Alabama Registration No. 15918

STATE OF ALABAMA
 COUNTY OF LAUDERDALE

I, Joy Outten, Member, Outten Development and Holding Company, LLC, owner of the property plotted on the enclosed plot and designated as ORCHARD MILLS PHASE I, do hereby grant, accept and expressly adopt said plot as the official record of same, and in consideration of the respective benefits to accrue to me, our successors, and assigns, do hereby grant and convey to the City of Florence, Alabama, the County of Lauderdale its successors and assigns, the easements shown hereon for electric, telephone, water, gas and sewer lines, and also ingress and egress, conveying the privileges necessary for the installation and maintenance of such utilities over the respective easements, including the right to cut and clear trees or parts thereof or other objects that may injure or endanger utility lines.
 Given under my hand this the 17th day of August, 2008.

Joy C. Outten
 Joy C. Outten, Member
 of Outten Development and Holding Company, LLC
 Joseph L. Outten, Member
 of Outten Development and Holding Company, LLC
 James A. Outten, Member
 of Outten Development and Holding Company, LLC

STATE OF ALABAMA
 COUNTY OF LAUDERDALE

I, the undersigned, a notary public in said State and County, hereby certify that Joy Outten, Joseph L. Outten, and James A. Outten, whose names are signed to the foregoing plot and who are known by me, acknowledged on this date that being informed of the contents of said plot, executed the same voluntarily on the day the same bears date.
 Given under my hand and seal this the 17th day of August, 2008.

James A. Outten, Notary Public

STATE OF ALABAMA
 COUNTY OF LAUDERDALE

Approved for recording by the City Engineer, City of Florence, Alabama. This the 18th day of August, 2008.

City Engineer City of Florence, AL

STATE OF ALABAMA
 COUNTY OF LAUDERDALE

Approved for recording by the Planning Commission, City of Florence, Alabama. This the 22nd day of August, 2008.

Chairman Planning Commission

STATE OF ALABAMA
 COUNTY OF LAUDERDALE

Approved for recording by the County Engineer, County of Lauderdale, Alabama. This the 21st day of August, 2008.

County Engineer Lauderdale County, AL

CERTIFICATE OF APPROVAL BY THE E911 BOARD

The undersigned as authorized by the Lauderdale County E911 Board, Alabama, hereby approved the within plot for the recording of same in the Probate Office of Lauderdale County, Alabama, this 21st day of August, 2008.

E911 Director

CERTIFICATE OF APPROVAL BY THE LAUDERDALE COUNTY FLOOD MANAGEMENT DEPARTMENT

The undersigned, as authorized by the Lauderdale County Flood Management Department, Alabama, hereby approved within plot for the recording of same in the Probate Office of Lauderdale County, Alabama, this 21st day of August, 2008.

Lauderdale County Flood Management Director

STATE OF ALABAMA
 COUNTY OF LAUDERDALE

I, Dewey Mitchell, Probate Judge, Lauderdale County, Alabama, hereby certify that the attached plot of ORCHARD MILLS PHASE I, was duly filed in the Office of the Judge of Probate of Lauderdale County, Alabama in plot Book 9, Page 146. This the 26th day of August, 2008.

Dewey Mitchell, Probate Judge, Lauderdale Co., AL

ORCHARD MILLS PHASE I
 LAUDERDALE COUNTY, ALABAMA

PRICE & RIDER ENGINEERING, INC.
 CIVIL ENGINEERS & LAND SURVEYORS
 228 WEST TENNESSEE STREET FLORENCE, ALABAMA
 (256) 766-8974

DRAWN DP DATE 08/08/08 SHEET 1
 CHECKED RW SCALE 1" = 100'