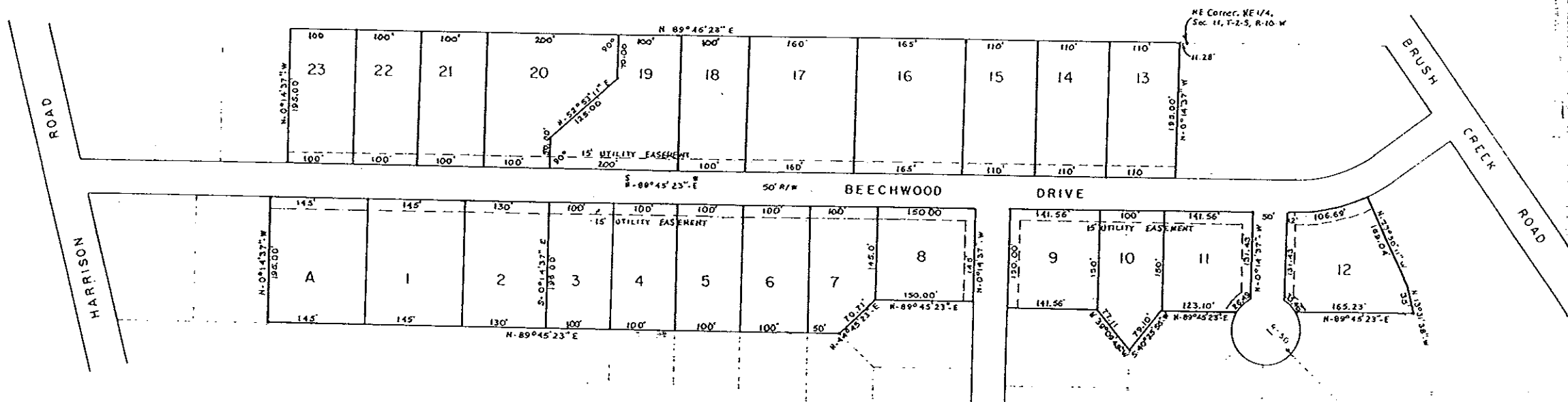


THE BEECHES

PART OF THE NW 1/4 OF SECTION 12 and PART OF THE NE 1/4 OF SECTION 11, T-2-S, R-10-W
LAUDERDALE COUNTY, ALABAMA



Plat showing, at reduced scale, THE BEECHES, according to the plat thereof recorded in the office of the Judge of Probate of Lauderdale County, Alabama, in Plat Book 5, Page 110.

THE BEECHES
Part of the NW 1/4 of Section 12 and Part of the NE 1/4
Of Section 11, Township 2 South, Range 10 West
Lauderdale County, Alabama

STATE OF ALABAMA
LAUDERDALE COUNTY

I, S. K. Alexander, a registered land surveyor, hereby certify that I have surveyed that tract of land designated as "THE BEECHES" situated in part of the Northwest 1/4 of Section 12 and part of the Northeast 1/4 of Section 11, T-2-S, R-10-W, Lauderdale County, Alabama, that I have subdivided said tract of land into lots, giving the bearing and length of each lot line and have shown the streets and easements therein, giving the bearing, length and width of each, that the annexed plat is a true and correct plat of said subdivision, and shows the correct relationship to the U S Government Survey of public lands in the State of Alabama.
This the 20th day of July, 1983.

S. K. Alexander
S. K. Alexander, Registered Land Surveyor
Alabama Certificate No 2268

STATE OF ALABAMA
LAUDERDALE COUNTY

I, Sara S. Alexander, a Notary Public for said state and County, hereby certify that S. K. Alexander, a registered land surveyor in the State of Alabama, whose name is signed to the foregoing instrument and who is known to me, acknowledged on this date that being informed of the contents of said instrument, executed the same voluntarily on the day the same bears date.

Sara S. Alexander
Notary Public

STATE OF ALABAMA
LAUDERDALE COUNTY

We, the undersigned, Albert McConnell Builders, Incorporated, A Corporation, owner of the property shown hereon and designated as "THE BEECHES" accept and expressly adopt said plat as an original record of same, and in consideration of the respective benefits to accrue to us, our successors and assigns, do hereby grant and convey to the City of Florence, Alabama, its successors and assigns, an easement or right of way, over, under, across and above the streets and public roads and alleys shown hereon for electric, telephone, water, gas and sewer lines and also for such purposes rights-of-way ten feet wide on either side of each side and rear lot line and other rights-of-way as shown, with the right of ingress and egress, conveying the privileges necessary for the installation and maintenance of such utilities over the respective right-of-way including the right to cut and clear trees or parts thereof or other objects that may injure or endanger overhead lines. Where a dwelling site is composed of several lots or part of a lot or parts of several lots, where the phrase "side lot line" is used herein, the same shall be construed to mean the property ownership line, unless the utility easement or easements along said lot line has been utilized by the City of Florence Utility Departments.
Given under our hand at Florence, Alabama this 19th day of July, 1983

Albert McConnell Builders, Inc.,
A Corporation
Attest: Freddie McConnell
Its Secretary
By: Albert McConnell
Its President

STATE OF ALABAMA
LAUDERDALE COUNTY

I, Sara S. Alexander, a notary public in and for said state and county, hereby certify that Albert McConnell, whose name as president of Albert McConnell Builders, Inc., A Corporation, owner of the property subdivided hereon, is signed to the foregoing instrument and who is known to me, acknowledged before me, on this day that being informed of the contents of this instrument, he, as such officer and with full authority executed the same voluntarily for and as the act of said corporation. Given under my hand and seal, this the 19th day of July, 1983.

Sara S. Alexander
Notary Public

STATE OF ALABAMA
LAUDERDALE COUNTY

Approved by the Lauderdale County Health Department,
this the 21st day of July, 1983.

Charles Looser
Health Officer

STATE OF ALABAMA
LAUDERDALE COUNTY

Approved by the Lauderdale County Highway Department,
this the 5th day of August, 1983.

Ronald P. Griffith
County Engineer

STATE OF ALABAMA
LAUDERDALE COUNTY

I, William B. Duncan, Probate Judge of Lauderdale County, Alabama, hereby certify that the annexed plat of "THE BEECHES" was filed in this office for recording and was duly recorded in Plat Book 5 on page 110, This the 11 day of August, 1983.

William B. Duncan
Probate Judge