

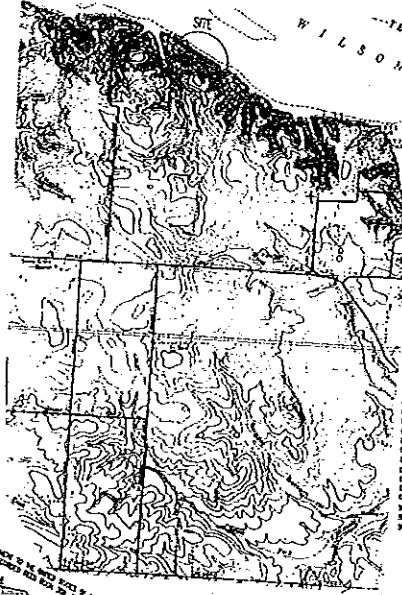
(FINAL PLAT) "BELLE VISTA", PHASE 1

A PROPOSED SUBDIVISION ON WILSON LAKE
 PART OF NORTH 1/2, SW 1/4, OF FRACTIONAL SECTION 10, TOWNSHIP 8 SOUTH, RANGE 9 WEST,
 COLBERT COUNTY, ALABAMA
 (BELLE VISTA DEVELOPERS, LLC) - P.O. BOX 54, PRATTVILLE, AL, 36065

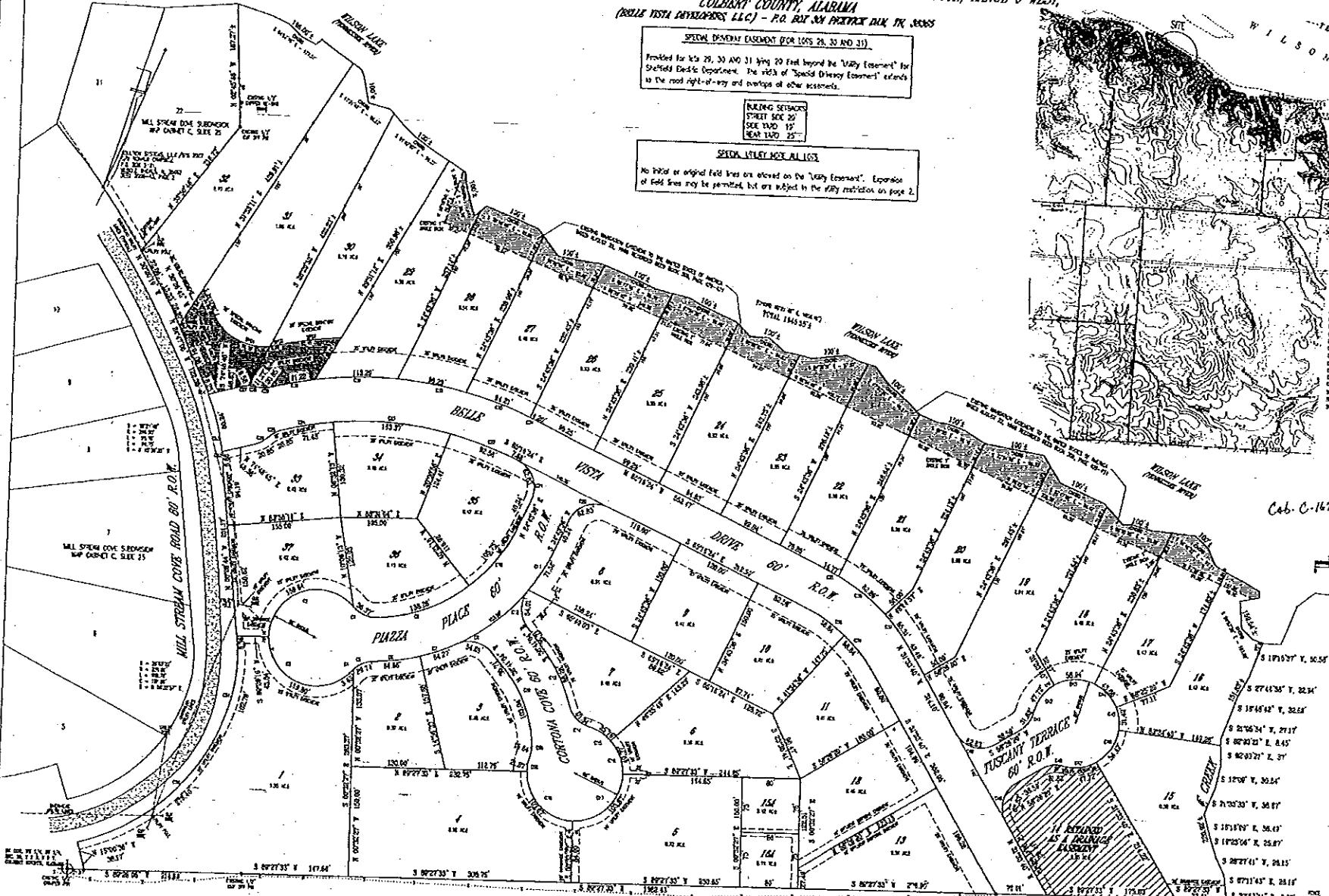
SPECIAL EASEMENT (FOR LOTS 28, 30 AND 31)
 Provided for Lots 28, 30 and 31 being 20 feet beyond the "Utility Easement" for Sheriff's Office Department. The width of "Special Easement" extends to the road right-of-way and overlaps all other easements.

BUILDING SETBACKS
 STREET SIDE 20'
 SIDE YARD 15'
 REAR YARD 25'

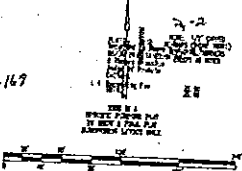
SPECIAL UTILITY FOR ALL LOTS
 No initial or original field lines are shown on the "Utility Easement". Expansion of field lines may be permitted, but are subject to the utility restriction on page 2.



LOT	AREA	AREA	AREA	AREA	AREA
1	1.00	1.00	1.00	1.00	1.00
2	1.00	1.00	1.00	1.00	1.00
3	1.00	1.00	1.00	1.00	1.00
4	1.00	1.00	1.00	1.00	1.00
5	1.00	1.00	1.00	1.00	1.00
6	1.00	1.00	1.00	1.00	1.00
7	1.00	1.00	1.00	1.00	1.00
8	1.00	1.00	1.00	1.00	1.00
9	1.00	1.00	1.00	1.00	1.00
10	1.00	1.00	1.00	1.00	1.00
11	1.00	1.00	1.00	1.00	1.00
12	1.00	1.00	1.00	1.00	1.00
13	1.00	1.00	1.00	1.00	1.00
14	1.00	1.00	1.00	1.00	1.00
15	1.00	1.00	1.00	1.00	1.00
16	1.00	1.00	1.00	1.00	1.00
17	1.00	1.00	1.00	1.00	1.00
18	1.00	1.00	1.00	1.00	1.00
19	1.00	1.00	1.00	1.00	1.00
20	1.00	1.00	1.00	1.00	1.00
21	1.00	1.00	1.00	1.00	1.00
22	1.00	1.00	1.00	1.00	1.00
23	1.00	1.00	1.00	1.00	1.00
24	1.00	1.00	1.00	1.00	1.00
25	1.00	1.00	1.00	1.00	1.00
26	1.00	1.00	1.00	1.00	1.00
27	1.00	1.00	1.00	1.00	1.00
28	1.00	1.00	1.00	1.00	1.00
29	1.00	1.00	1.00	1.00	1.00
30	1.00	1.00	1.00	1.00	1.00
31	1.00	1.00	1.00	1.00	1.00
32	1.00	1.00	1.00	1.00	1.00
33	1.00	1.00	1.00	1.00	1.00
34	1.00	1.00	1.00	1.00	1.00
35	1.00	1.00	1.00	1.00	1.00
36	1.00	1.00	1.00	1.00	1.00
37	1.00	1.00	1.00	1.00	1.00
38	1.00	1.00	1.00	1.00	1.00
39	1.00	1.00	1.00	1.00	1.00
40	1.00	1.00	1.00	1.00	1.00
41	1.00	1.00	1.00	1.00	1.00
42	1.00	1.00	1.00	1.00	1.00
43	1.00	1.00	1.00	1.00	1.00
44	1.00	1.00	1.00	1.00	1.00
45	1.00	1.00	1.00	1.00	1.00
46	1.00	1.00	1.00	1.00	1.00
47	1.00	1.00	1.00	1.00	1.00
48	1.00	1.00	1.00	1.00	1.00
49	1.00	1.00	1.00	1.00	1.00
50	1.00	1.00	1.00	1.00	1.00
51	1.00	1.00	1.00	1.00	1.00
52	1.00	1.00	1.00	1.00	1.00
53	1.00	1.00	1.00	1.00	1.00
54	1.00	1.00	1.00	1.00	1.00
55	1.00	1.00	1.00	1.00	1.00
56	1.00	1.00	1.00	1.00	1.00
57	1.00	1.00	1.00	1.00	1.00
58	1.00	1.00	1.00	1.00	1.00
59	1.00	1.00	1.00	1.00	1.00
60	1.00	1.00	1.00	1.00	1.00
61	1.00	1.00	1.00	1.00	1.00
62	1.00	1.00	1.00	1.00	1.00
63	1.00	1.00	1.00	1.00	1.00
64	1.00	1.00	1.00	1.00	1.00
65	1.00	1.00	1.00	1.00	1.00
66	1.00	1.00	1.00	1.00	1.00
67	1.00	1.00	1.00	1.00	1.00
68	1.00	1.00	1.00	1.00	1.00
69	1.00	1.00	1.00	1.00	1.00
70	1.00	1.00	1.00	1.00	1.00
71	1.00	1.00	1.00	1.00	1.00
72	1.00	1.00	1.00	1.00	1.00
73	1.00	1.00	1.00	1.00	1.00
74	1.00	1.00	1.00	1.00	1.00
75	1.00	1.00	1.00	1.00	1.00
76	1.00	1.00	1.00	1.00	1.00
77	1.00	1.00	1.00	1.00	1.00
78	1.00	1.00	1.00	1.00	1.00
79	1.00	1.00	1.00	1.00	1.00
80	1.00	1.00	1.00	1.00	1.00
81	1.00	1.00	1.00	1.00	1.00
82	1.00	1.00	1.00	1.00	1.00
83	1.00	1.00	1.00	1.00	1.00
84	1.00	1.00	1.00	1.00	1.00
85	1.00	1.00	1.00	1.00	1.00
86	1.00	1.00	1.00	1.00	1.00
87	1.00	1.00	1.00	1.00	1.00
88	1.00	1.00	1.00	1.00	1.00
89	1.00	1.00	1.00	1.00	1.00
90	1.00	1.00	1.00	1.00	1.00
91	1.00	1.00	1.00	1.00	1.00
92	1.00	1.00	1.00	1.00	1.00
93	1.00	1.00	1.00	1.00	1.00
94	1.00	1.00	1.00	1.00	1.00
95	1.00	1.00	1.00	1.00	1.00
96	1.00	1.00	1.00	1.00	1.00
97	1.00	1.00	1.00	1.00	1.00
98	1.00	1.00	1.00	1.00	1.00
99	1.00	1.00	1.00	1.00	1.00
100	1.00	1.00	1.00	1.00	1.00



Tab. C-167



(FINAL PLAT) BELLE VISTA PHASE 1
 A PROPOSED SUBDIVISION ON WILSON LAKE
 PART OF NORTH 1/2, SW 1/4, OF FRACTIONAL SECTION 10, TOWNSHIP 8 SOUTH, RANGE 9 WEST,
 COLBERT COUNTY, ALABAMA
 (BELLE VISTA DEVELOPERS, LLC) - P.O. BOX 54, PRATTVILLE, AL, 36065

WILSON LAKE (FRONTAGE ROAD)
 MILL STREAM COVE ROAD 60' R.O.W.
 PLAZA PLACE
 VISTA
 DOVE
 CRESCENT TERRACE 60' R.O.W.
 BELLE VISTA DEVELOPERS, LLC
 P.O. BOX 54, PRATTVILLE, AL, 36065

