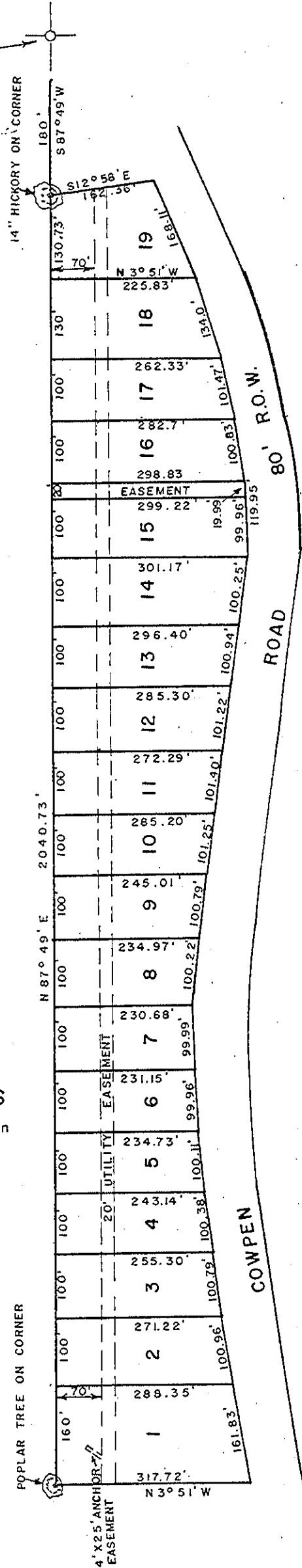


N.E. CORNER, SOUTH 1/2 OF THE
S.E. 1/4 OF SECTION 13, T15, R10W
LAUDERDALE COUNTY, ALABAMA



PLAT SHOWING AT REDUCED SCALE
BERKELEY HILLS ESTATES

according to the plat thereof recorded in
the Office of the Judge of Probate
Lauderdale County, Alabama - in Plat
Book 4, page 54.

Note: See recorded Plat for bearings
of front Lot lines.