

C-4B

DAVIS ESTATES

TUSCUMBIA, ALABAMA



STATE OF ALABAMA
COUNTY OF COLBERT

I, Billy Rider, a registered land surveyor in said State and County, hereby certify that I have surveyed the certain tract of land designated as "DAVIS ESTATES" on the annexed plat situated in Section 12, Township 1 South, Range 12 East, Colbert County, Alabama. I have surveyed said tract showing the streets and easements therein, giving the bearings and lengths of each line, as well as the size of the lots. I further certify that the annexed plat is a true and correct plat of said subdivision and shows the proper relationship to the U.S. Government Survey of Public Lands in the State of Alabama.

Given under my hand and seal, this the 15th day of April, 1930.

Billy Rider
Billy Rider, L.S.
Alabama Registration No. 14650

STATE OF ALABAMA
COUNTY OF COLBERT

We, the undersigned, James C. Kibbitt, Gene Group, and James B. Dickson, owners of the property platted on the annexed plat and designated as "DAVIS ESTATES", do hereby accept and expressly adopt said plat as the official record of same, and in consideration of the foregoing benefits to accrue in respect to our interests and easements do hereby grant and convey to the City of Sheffield, Alabama, City of Tuscumbia, Alabama, and Colbert County, Alabama, its successors and assigns, the easements and rights of way known herein for telephone, telephone, water, gas and sewer lines, and also ingress and egress, conveying the privileges necessary for the installation and maintenance of such utilities over the respective rights of way and easements, including the right to cut and clear trees or parts thereof or other objects that may interfere or obstruct utility lines.

Given under our hand this the 21st day of August, 1930.

James C. Kibbitt
James C. Kibbitt
Gene Group
Gene Group
James B. Dickson
James B. Dickson

STATE OF ALABAMA
COUNTY OF COLBERT

I, the undersigned, a surveyor in said State and County, hereby certify that James C. Kibbitt, Gene Group and James B. Dickson, whose names are signed to the foregoing plat and who are known to me, authorized on this date that being informed of the contents of said plat, accepted the same voluntarily on the day the same bears date, given under my hand and seal this the 21st day of August, 1930.

Henry S. Foster
Henry S. Foster

STATE OF ALABAMA
COUNTY OF COLBERT

Approved for recording by the Northwest Alabama Regional Health Department, Colbert County, Alabama, this the 4th day of October, 1930.

Larry D. Cheving
Larry D. Cheving
Inspector

STATE OF ALABAMA
COUNTY OF COLBERT

Approved for recording by the Colbert County Highway Department; said approval pertains to proposed streets and drainage only. This the 4th day of October, 1930.

County Engineer
County Engineer

STATE OF ALABAMA
COUNTY OF COLBERT

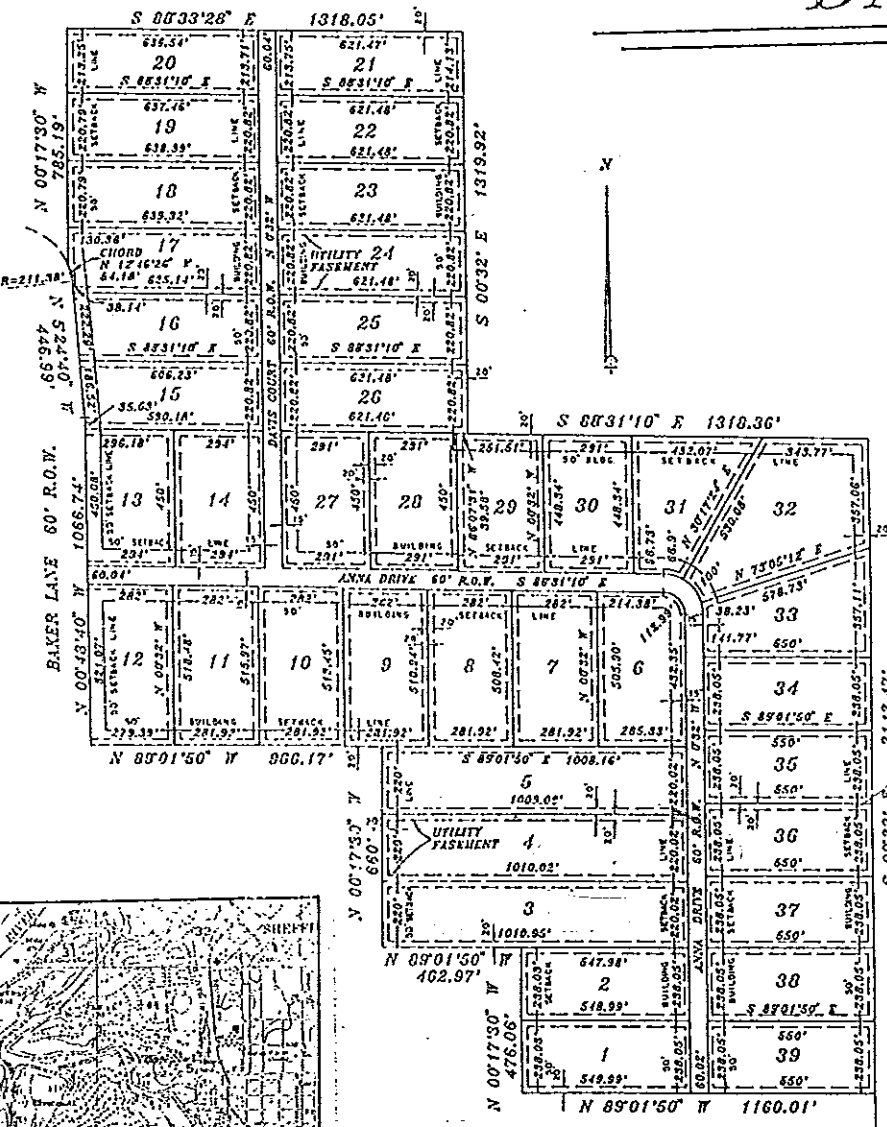
I, W. Thomas Crosslin, Probate Judge, Colbert County, Alabama, hereby certify that the attached plat of "DAVIS ESTATES" was duly filed in the Office of the Probate Judge of Colbert County, Alabama in Plat Cabinet 10 Page 4-13 this the 4th day of October, 1930.

W. Thomas Crosslin
W. Thomas Crosslin, Probate Judge
Colbert County, Alabama

STATE OF ALABAMA
COUNTY OF COLBERT

Approved for recording by the Planning Commission, City of Tuscumbia, Alabama, this the 4th day of October, 1930.

Howard S. Gamba
Howard S. Gamba
Chairman, City Planning Commission

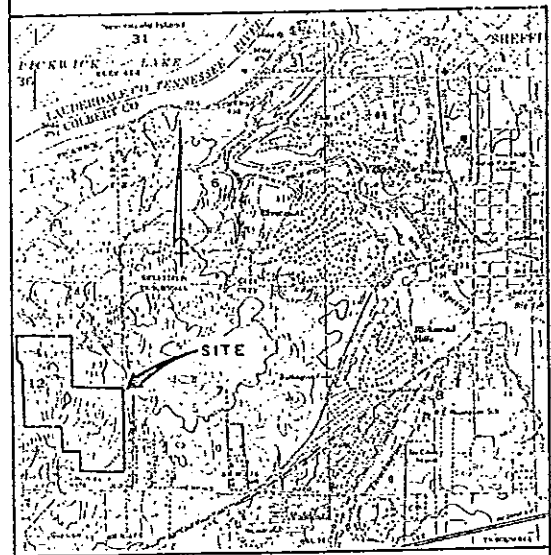


S CURVES
C = 87°50'10"
R = 103.58'
T = 100.00'
L = 150.00'

Corrected
10-4-30

630 001 -4 Pt 4-23
page 107

1426.2



VICINITY MAP

PAXTON PRICE & RIDER ENGINEERING
2323 JACKSON HIGHWAY
SHEFFIELD, ALABAMA

DRAWN	W. R.	DATE	8-8-30	SHEET	1
CHECKED	S. R.	SCALE	1" = 200'	OF 1 SHEETS	
REVISIONS					