

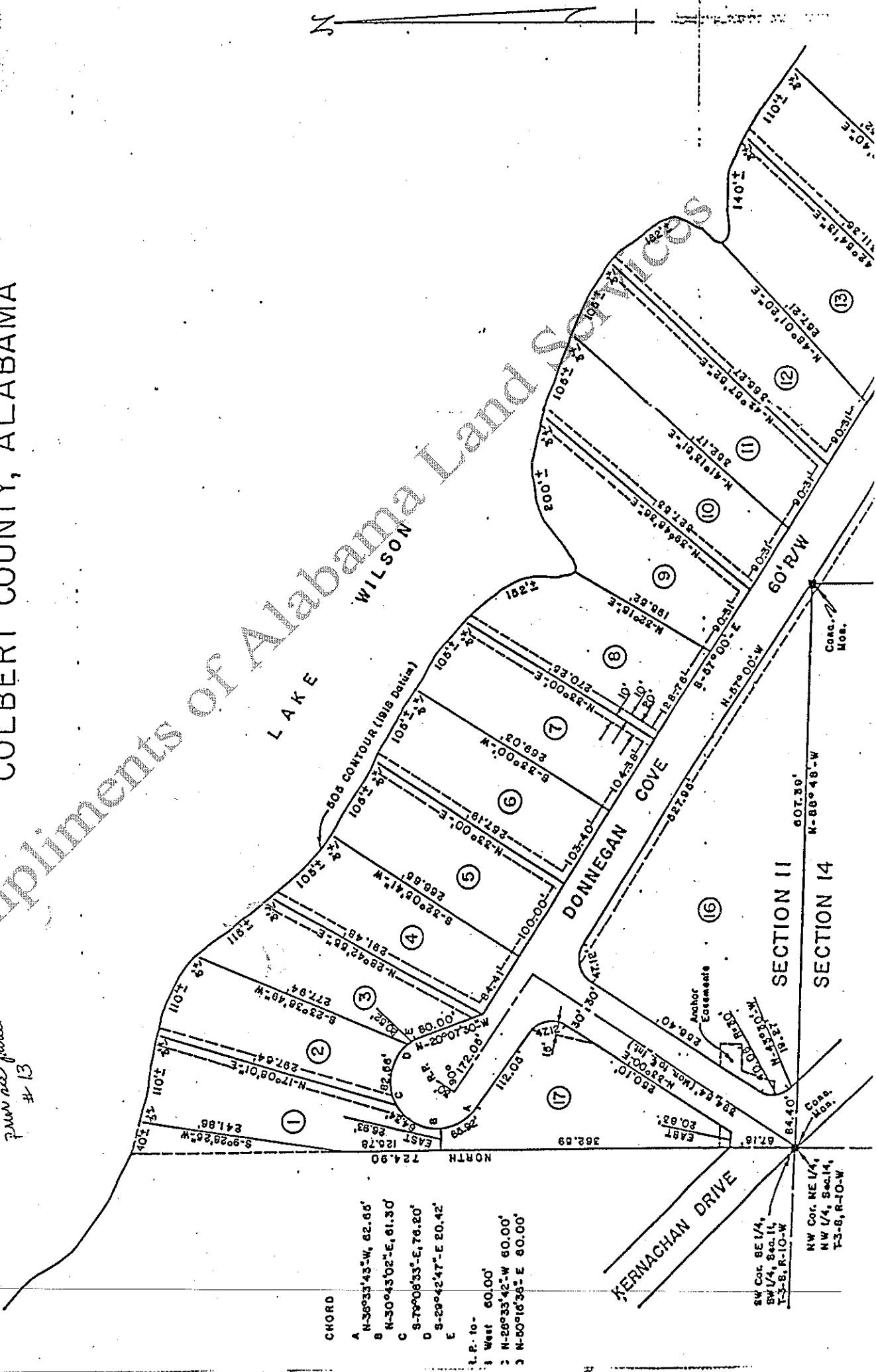
# DONNEGAN SHORES

## PART OF SECTIONS 11 AND 14, T-3-S, R-10-W

### COLBERT COUNTY, ALABAMA

THIS INSTRUMENT HAS BEEN  
 FILED FOR RECORD IN  
 COLBERT COUNTY, ALABAMA  
 1987 JUN 19 AM 9:01  
 Cabinet Book B  
 Slide 96-B  
 BY THE REGISTER  
 COLBERT COUNTY, ALABAMA

Cornered line:  
 pins are placed  
 # 13



- CHORD
- A N-36°33'43"-W, 62.66'
  - B N-30°43'02"-E, 61.30'
  - C S-79°08'33"-E, 76.80'
  - D S-29°42'47"-E 20.42'
  - E
- t. P. to -
- 1 West 60.00'
  - 2 N-26°33'42"-W 60.00'
  - 3 N-80°16'36"-E 60.00'

SW Cor. SE 1/4,  
 SW 1/4, Sec. 11,  
 T-3-S, R-10-W  
 NW Cor. NE 1/4,  
 NW 1/4, Sec. 14,  
 T-3-S, R-10-W

DONNEGAN SHORES SUBDIVISION as recorded in the Office of the Judge of Probate of Colbert County, Alabama in Cabinet Book B, Slide 96-B.