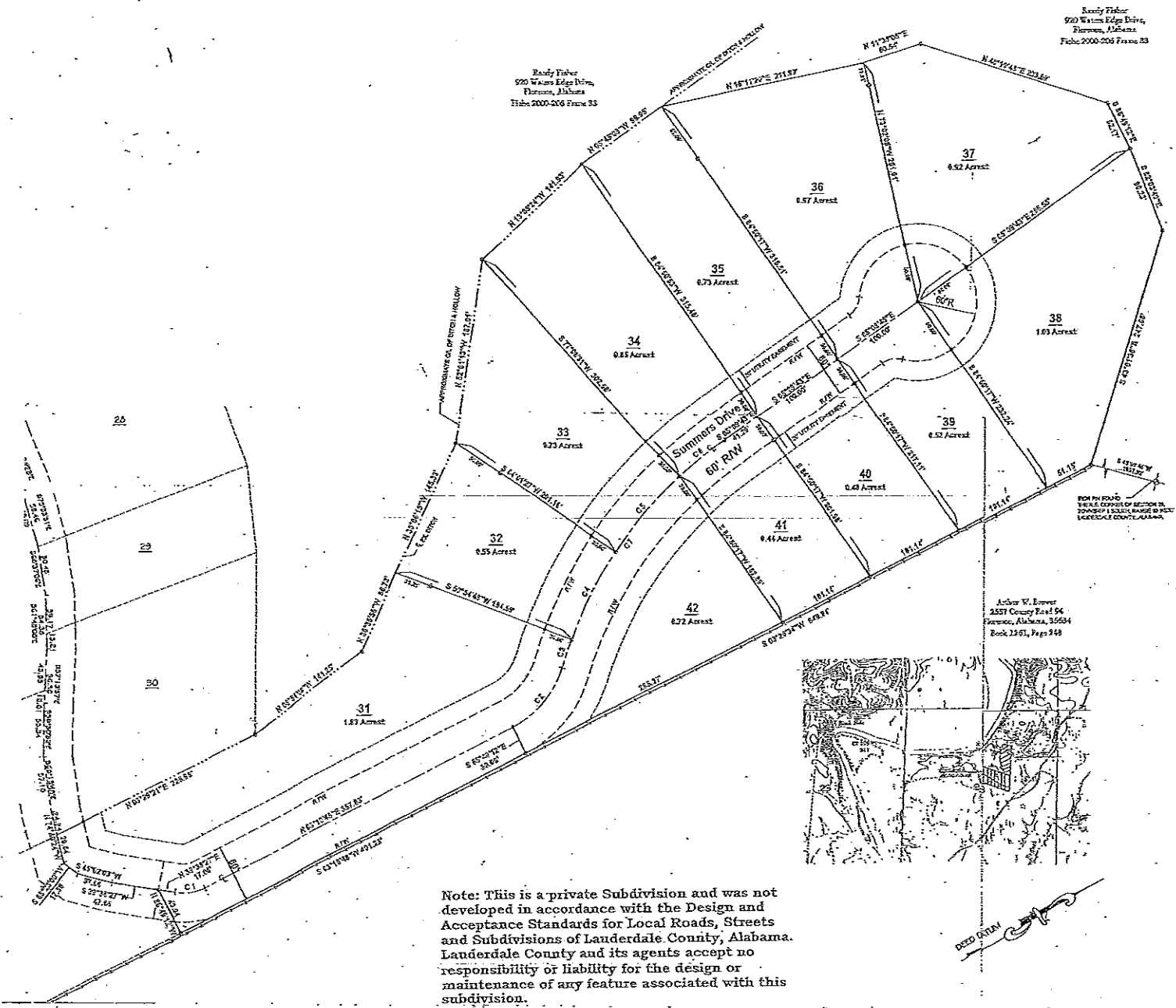


# "FISHER HOLLOW PHASE III"

PLAT - A PART OF SECTION 28, TOWNSHIP 1 SOUTH, RANGE 10 WEST  
LAUDERDALE COUNTY, ALABAMA



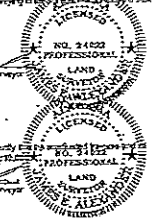
Note: This is a private Subdivision and was not developed in accordance with the Design and Acceptance Standards for Local Roads, Streets and Subdivisions of Lauderdale County, Alabama. Lauderdale County and its agents accept no responsibility or liability for the design or maintenance of any feature associated with this subdivision.

Randy Fisher  
520 Waters Edge Drive,  
Florence, Alabama  
Title 2000-2106 Private SS

Randy Fisher  
520 Waters Edge Drive,  
Florence, Alabama  
Title 2000-2106 Private SS

Arthur W. Evers  
2551 County Road 54  
Florence, Alabama, 35504  
Book 1261, Page 948

State of Alabama  
County of Lauderdale  
I, James E. Alexander, a Registered Land Surveyor in the State of Alabama, hereby certify that I have surveyed that tract of land designated as "Fisher Hollow Phase III", situated in Section 28, Township 1 South, Range 10 West, Lauderdale County, Alabama, and have recorded said plat of said lot, giving the bearing and length of each lot line, and have shown the streets and easements therein, giving the bearing, length and width of each; that the plat shows herein to be a true and correct plat of said subdivisions and shows the correct relationship to the U.S. Government survey of public lands in the State of Alabama; that all parts of this survey and design are true in accordance with the current Standards of Practice for Surveyors in the State of Alabama; to the best of my knowledge, information, and belief.  
This the 25<sup>th</sup> day of October, 2005.



State of Alabama  
County of Lauderdale  
I, James E. Alexander, Registered Land Surveyor, hereby certify that I have surveyed the components of this plat to be a true and correct survey of the same.  
James E. Alexander, Registered Land Surveyor

State of Alabama  
County of Lauderdale  
We, the undersigned, Randy Fisher, Robert T. Dickson and Phyllis D. Dickson owners of the property shown herein and designated as "Fisher Hollow Phase III", accept and expressly adopt said plat as an official record of same, and in consideration of the respective benefits to be derived by us, my successors and assigns, do hereby grant and convey to the City of Florence and County of Lauderdale, Alabama, its successors and assigns, as a easement or right-of-way over, under, across and above the streets, public roads and other easements shown herein for electric, telephone, water gas and sewer lines and other right-of-way as shown, with the right of ingress and egress, conveying the privileges necessary for the installation and maintenance of such utilities over the respective right-of-way including the right to cut and clear trees or parts thereof or other obstructions that may here or hereafter be located thereon.  
Done under my hand and seal at the City of Florence, Alabama, this the 25<sup>th</sup> day of October, 2005.

Randy Fisher  
Robert T. Dickson  
Phyllis D. Dickson

State of Alabama  
County of Lauderdale  
I, as undersigned authority, a Notary Public in and for said county in said state, do hereby certify that Randy Fisher, Robert T. Dickson and Phyllis D. Dickson, whose names is signed in the foregoing conditions of this instrument, executed the same voluntarily, were before me and officially sworn to the truth of the same.  
This the 25<sup>th</sup> day of October, 2005.  
Notary Public  
My Commission Expires: 10/12/06

State of Alabama  
County of Lauderdale  
This subdivision meets the approval of the Lauderdale County Health Department subject to certain conditions of approval and its decisions on file with the said County Health Department, which conditions are made a part of this approval as it set out herein.  
This the 25<sup>th</sup> day of October, 2005.  
County Health Officer

State of Alabama  
County of Lauderdale  
Approved for recording by the County Engineer, Lauderdale County, Alabama.  
This the 25<sup>th</sup> day of October, 2005.  
County Engineer

State of Alabama  
County of Lauderdale  
I, Conroy D. McCall, Probate Judge of Lauderdale County, Alabama, hereby certify that the amended plat of "Fisher Hollow Phase III" was filed in this office for recording and was duly recorded in Plat Book 11 on Page 252.  
This the 25<sup>th</sup> day of October, 2005.  
Conroy D. McCall  
Probate Judge

