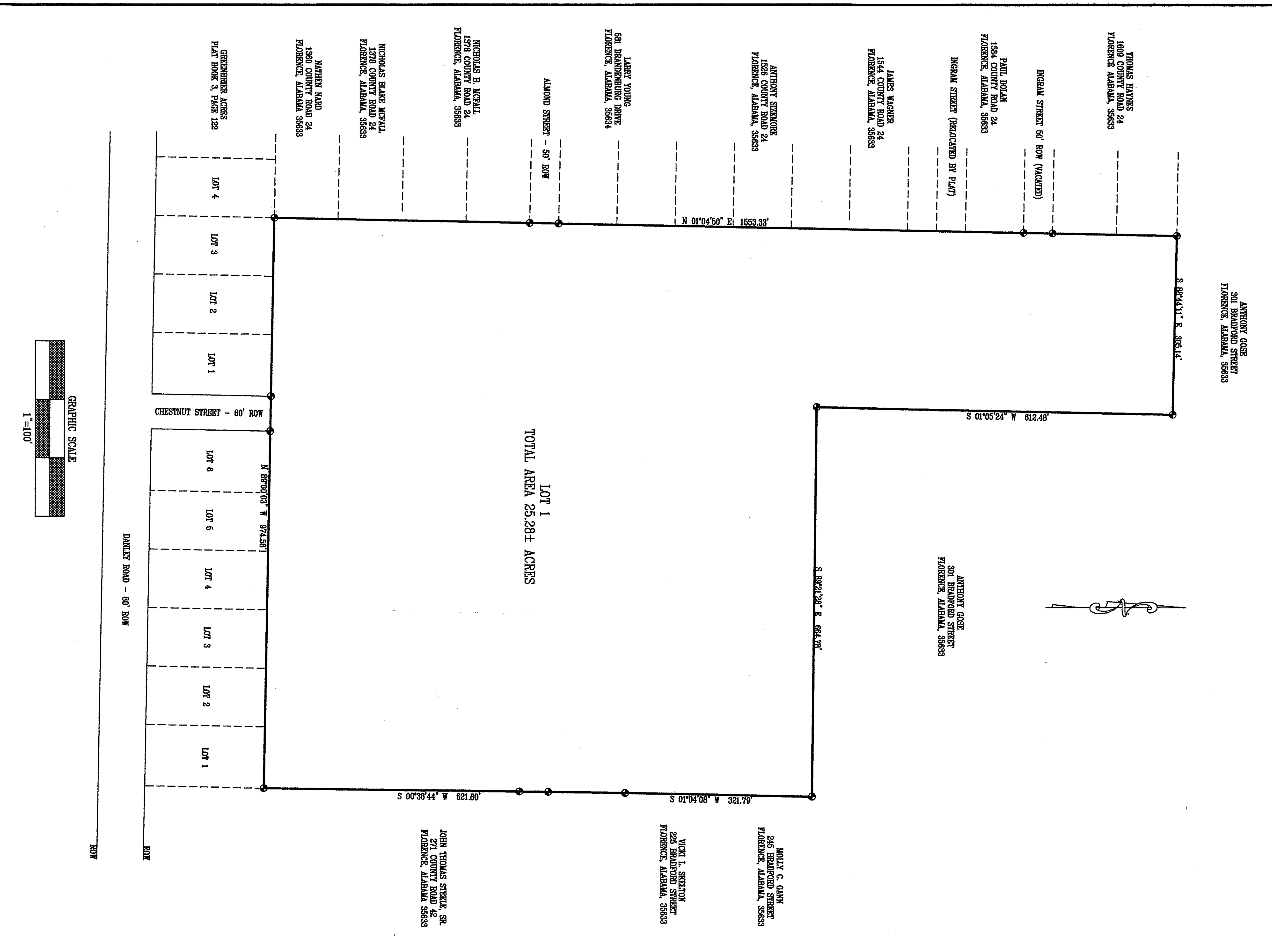


# RESURVEY OF PART OF BLOCKS A, B, C, D, E AND F GREENBRIER ACRES ADDITION NO. 1 PLAT BOOK 4, PAGE 57



STATE OF ALABAMA  
 COUNTY OF LAUDERDALE

I, Daniel J. Hammond, owner of the property platted on the annexed plat and designated as RESURVEY OF PART OF BLOCKS A, B, C, D, E AND F, GREENBRIER ADDITION NO. 1, do hereby accept and expressly adopt said plat as the official record of same, and in consideration of the respective benefits to accrue to us, our successors and assigns, do hereby grant and convey to the City of Florence, Alabama, the County of Lauderdale, its successors and assigns the easements shown hereon for electric, telephone, water, gas and sewer lines and easements for ingress and egress, conveying the privileges necessary for the installation and maintenance of such utilities over the respective easements including the right to cut and clear trees of parts thereof or other objects that may in future endanger utility lines.

Given under my hand, this the 22nd day of JUNE, 2018.

*Daniel J. Hammond*  
 Daniel J. Hammond

STATE OF ALABAMA  
 COUNTY OF LAUDERDALE

I, the undersigned, a notary public in said State and County, hereby certify that Daniel J. Hammond, whose name is signed to the foregoing plat and who is known by me, acknowledged on this date that he is the owner of the contents of said plat, executed the same voluntarily on the same bears date.

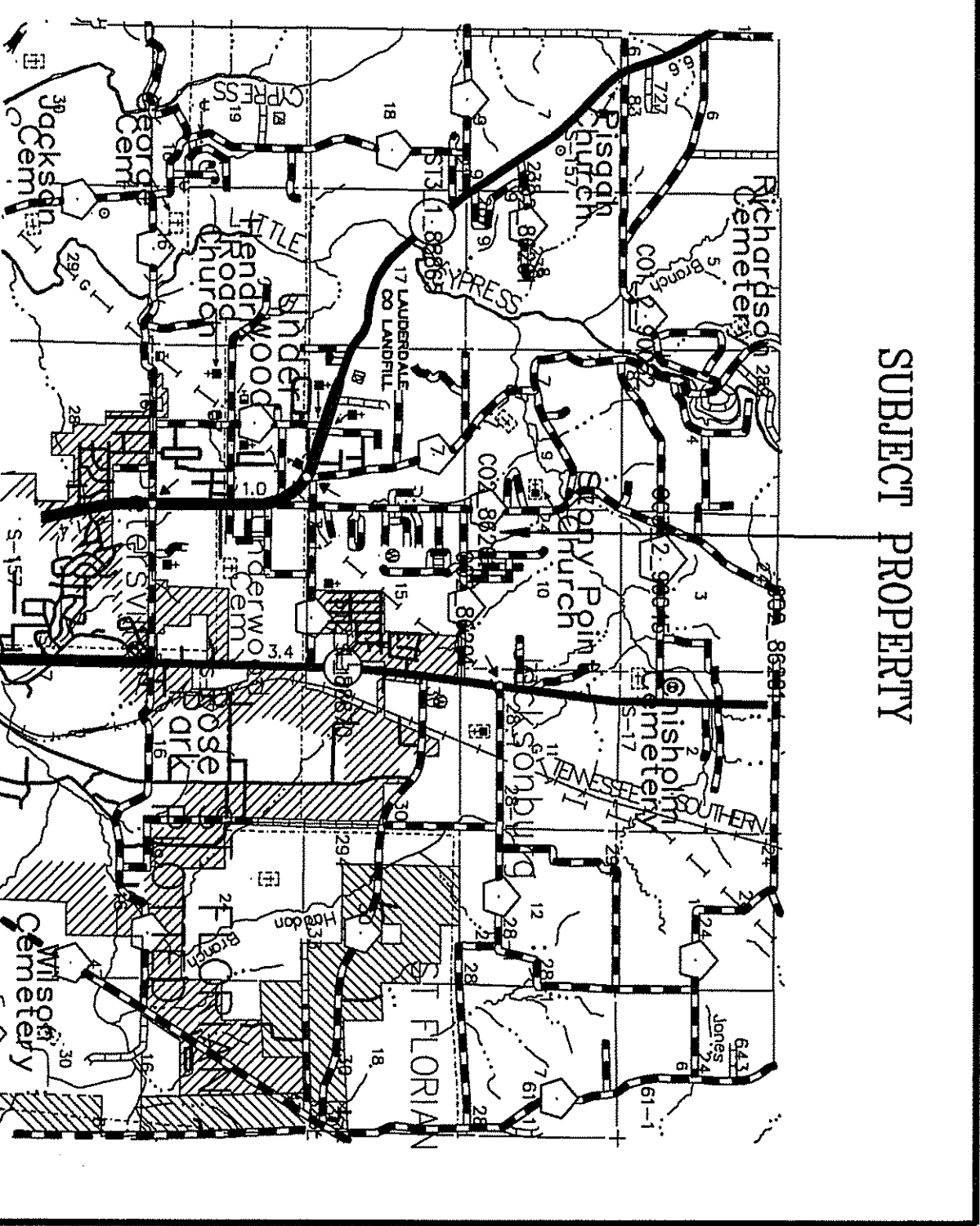
Given under my hand and seal, this the 22nd day of JUNE, 2018.

*Henry L. King*  
 Henry L. King  
 Notary Public  
 Alabama State Notary Large

STATE OF ALABAMA  
 COUNTY OF LAUDERDALE

I, Will Motlow, Probate Judge, Lauderdale County, Alabama, hereby certify that the attached plat of RESURVEY OF PART OF BLOCKS A, B, C, D, E AND F, GREENBRIER ADDITION NO. 1, was duly filed in the office of the Judge of Probate of Lauderdale County, Alabama, in Plat Book 4, Page 57. This the 30th day of July, 2018.

*Will Motlow*  
 Will Motlow  
 Probate Judge  
 Lauderdale County, Alabama



STATE OF ALABAMA  
 COUNTY OF LAUDERDALE

I, Ronnie E. Wightton, a registered land surveyor in said State and County, hereby certify that I have surveyed that certain tract of land designated as RESURVEY OF PART OF BLOCKS A, B, C, D, E AND F, GREENBRIER ADDITION NO. 1, on the annexed plat, and have thereon shown the location of the easements, giving the bearings and lengths of each line as well as the size of the tract, and showing the proper relationship to the U. S. Government Survey of Public Lands in the State of Alabama.

I hereby certify/state that all parts of this survey and drawing have been completed in accordance with the requirements of the Minimum Technical Standards for the Practice of Land Surveying in the State of Alabama.

Given under my hand and seal, this the 14th day of June, 2018.

*Ronnie E. Wightton*  
 Ronnie E. Wightton  
 Alabama Registration No. 15918

STATE OF ALABAMA  
 COUNTY OF LAUDERDALE

The undersigned, as authorized by the Lauderdale County Board of Commissioners, hereby approved the within plat for the recording of the same in the Probate Office of Lauderdale County, Alabama, this 17 day of June, 2018.

*John J. ...*  
 Director

STATE OF ALABAMA  
 COUNTY OF LAUDERDALE

This is the 17th day of June, 2018.

*Stephen ...*  
 Stephen ...  
 Florence Planning Commission

STATE OF ALABAMA  
 COUNTY OF LAUDERDALE

Approved for recording by the City Engineer of the City of Florence, Alabama, this the 17th day of June, 2018.

*William B. ...*  
 William B. ...  
 Lauderdale County Flood Management Director

STATE OF ALABAMA  
 COUNTY OF LAUDERDALE

The undersigned, as authorized by the Florence Electricity Department of Florence, Alabama, hereby approved the within plat for the recording of the same in the Probate Office of Lauderdale County, Alabama, this the 17th day of June, 2018.

*Shawn ...*  
 Shawn ...  
 Florence Electricity Department

STATE OF ALABAMA  
 COUNTY OF LAUDERDALE

Approved for recording by the County Engineer, County of Lauderdale, Alabama, this the 17th day of June, 2018.

*Eric Hill*  
 Eric Hill, County Engineer  
 Lauderdale County, AL

**THIS SURVEY IS INTENDED FOR THE SOLE PURPOSE AND USE BY THE PERSON NAMED HEREON AND IS NOT TRANSFERABLE.**

**LEGEND**

---	2" - 1" CONCRETE	---	1" - 1" CONCRETE
---	4" - 1" CONCRETE	---	1" - 1" CONCRETE
---	6" - 1" CONCRETE	---	1" - 1" CONCRETE
---	8" - 1" CONCRETE	---	1" - 1" CONCRETE
---	10" - 1" CONCRETE	---	1" - 1" CONCRETE
---	12" - 1" CONCRETE	---	1" - 1" CONCRETE
---	14" - 1" CONCRETE	---	1" - 1" CONCRETE
---	16" - 1" CONCRETE	---	1" - 1" CONCRETE
---	18" - 1" CONCRETE	---	1" - 1" CONCRETE
---	20" - 1" CONCRETE	---	1" - 1" CONCRETE
---	22" - 1" CONCRETE	---	1" - 1" CONCRETE
---	24" - 1" CONCRETE	---	1" - 1" CONCRETE
---	26" - 1" CONCRETE	---	1" - 1" CONCRETE
---	28" - 1" CONCRETE	---	1" - 1" CONCRETE
---	30" - 1" CONCRETE	---	1" - 1" CONCRETE
---	32" - 1" CONCRETE	---	1" - 1" CONCRETE
---	34" - 1" CONCRETE	---	1" - 1" CONCRETE
---	36" - 1" CONCRETE	---	1" - 1" CONCRETE
---	38" - 1" CONCRETE	---	1" - 1" CONCRETE
---	40" - 1" CONCRETE	---	1" - 1" CONCRETE
---	42" - 1" CONCRETE	---	1" - 1" CONCRETE
---	44" - 1" CONCRETE	---	1" - 1" CONCRETE
---	46" - 1" CONCRETE	---	1" - 1" CONCRETE
---	48" - 1" CONCRETE	---	1" - 1" CONCRETE
---	50" - 1" CONCRETE	---	1" - 1" CONCRETE
---	52" - 1" CONCRETE	---	1" - 1" CONCRETE
---	54" - 1" CONCRETE	---	1" - 1" CONCRETE
---	56" - 1" CONCRETE	---	1" - 1" CONCRETE
---	58" - 1" CONCRETE	---	1" - 1" CONCRETE
---	60" - 1" CONCRETE	---	1" - 1" CONCRETE
---	62" - 1" CONCRETE	---	1" - 1" CONCRETE
---	64" - 1" CONCRETE	---	1" - 1" CONCRETE
---	66" - 1" CONCRETE	---	1" - 1" CONCRETE
---	68" - 1" CONCRETE	---	1" - 1" CONCRETE
---	70" - 1" CONCRETE	---	1" - 1" CONCRETE
---	72" - 1" CONCRETE	---	1" - 1" CONCRETE
---	74" - 1" CONCRETE	---	1" - 1" CONCRETE
---	76" - 1" CONCRETE	---	1" - 1" CONCRETE
---	78" - 1" CONCRETE	---	1" - 1" CONCRETE
---	80" - 1" CONCRETE	---	1" - 1" CONCRETE
---	82" - 1" CONCRETE	---	1" - 1" CONCRETE
---	84" - 1" CONCRETE	---	1" - 1" CONCRETE
---	86" - 1" CONCRETE	---	1" - 1" CONCRETE
---	88" - 1" CONCRETE	---	1" - 1" CONCRETE
---	90" - 1" CONCRETE	---	1" - 1" CONCRETE
---	92" - 1" CONCRETE	---	1" - 1" CONCRETE
---	94" - 1" CONCRETE	---	1" - 1" CONCRETE
---	96" - 1" CONCRETE	---	1" - 1" CONCRETE
---	98" - 1" CONCRETE	---	1" - 1" CONCRETE
---	100" - 1" CONCRETE	---	1" - 1" CONCRETE

PHONE: 256-782-8943  
 DATE: FEBRUARY 2, 2018  
 BASIS OF INFORMATION: PLAT

WIGHTON & SONS  
 103 KENSINGTON DRIVE  
 FLORENCE, AL 36633

RONNIE WIGHTON  
 JOB NUMBER: 18-1026  
 DRAWN BY: RW.