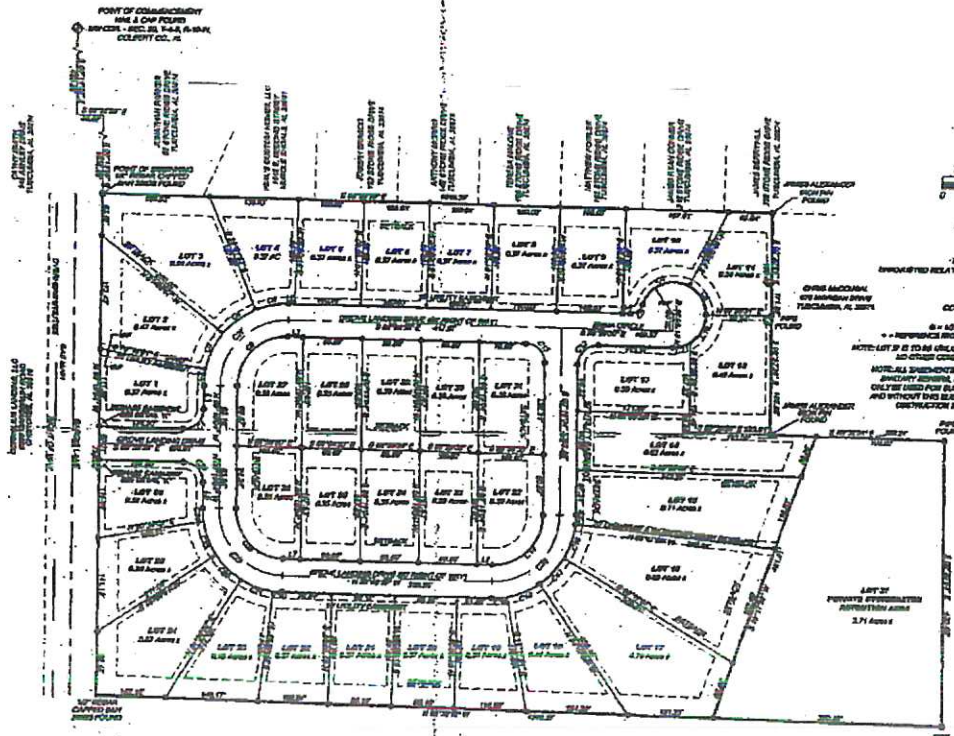


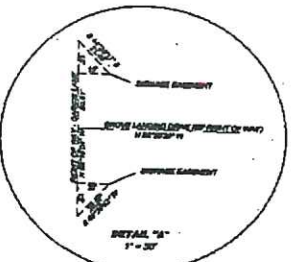
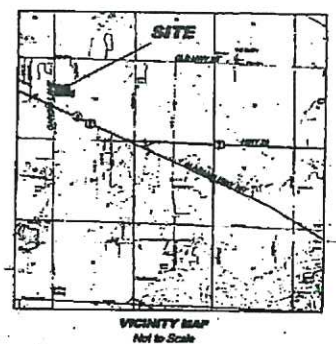
**GROVE LANDING**  
**PART OF THE NORTHWEST 1/4 OF SECTION 20, TOWNSHIP 4 SOUTH, RANGE 10 WEST,**  
**CITY OF MUSCLE SHOALS, COLBERT COUNTY, ALABAMA**  
**RICKY VEAL, OWNER/DEVELOPER**  
**20.51 ACRES ±**

Plat 2020-19.4  
 Cab. D - slide 22

DATE: 08/20/2020 10:20:11 AM  
 DRAWN BY: R. H. HAYES  
 CHECKED BY: R. H. HAYES  
 JOB NO: 2020-19.4  
 SHEET: 1 OF 1  
 JOB: Plat 2020-19.4  
 JOB: Cab. D - slide 22



LOT NO.	ACRES	AREA	PERCENTAGE
LOT 1	0.25	0.25	1.22
LOT 2	0.25	0.25	1.22
LOT 3	0.25	0.25	1.22
LOT 4	0.25	0.25	1.22
LOT 5	0.25	0.25	1.22
LOT 6	0.25	0.25	1.22
LOT 7	0.25	0.25	1.22
LOT 8	0.25	0.25	1.22
LOT 9	0.25	0.25	1.22
LOT 10	0.25	0.25	1.22
LOT 11	0.25	0.25	1.22
LOT 12	0.25	0.25	1.22
LOT 13	0.25	0.25	1.22
LOT 14	0.25	0.25	1.22
LOT 15	0.25	0.25	1.22
LOT 16	0.25	0.25	1.22
LOT 17	0.25	0.25	1.22
LOT 18	0.25	0.25	1.22
LOT 19	0.25	0.25	1.22
LOT 20	0.25	0.25	1.22
LOT 21	0.25	0.25	1.22
LOT 22	0.25	0.25	1.22
LOT 23	0.25	0.25	1.22
LOT 24	0.25	0.25	1.22
LOT 25	0.25	0.25	1.22
LOT 26	0.25	0.25	1.22
LOT 27	0.25	0.25	1.22
LOT 28	0.25	0.25	1.22
LOT 29	0.25	0.25	1.22
LOT 30	0.25	0.25	1.22
LOT 31	0.25	0.25	1.22
LOT 32	0.25	0.25	1.22
LOT 33	0.25	0.25	1.22
LOT 34	0.25	0.25	1.22
LOT 35	0.25	0.25	1.22
LOT 36	0.25	0.25	1.22
LOT 37	0.25	0.25	1.22



STATE OF ALABAMA  
 COUNTY OF COLBERT  
 CERTIFICATE OF CITY CLERK

I, Richard L. Wilburn, Clerk of the City of Muscle Shoals, Alabama, hereby certify that the plat of the subdivision of the land shown on the attached plat is correct and true to the original plat on file in the City Clerk's Office. The plat is correct and true to the original plat on file in the City Clerk's Office.

Witness my hand and the seal of the City of Muscle Shoals, Alabama, this 22 day of August, 2020.

Richard L. Wilburn  
 City Clerk

STATE OF ALABAMA  
 COUNTY OF COLBERT  
 CERTIFICATE OF APPROVAL OF STREET DEPARTMENT

I hereby certify that the subdivision plat for "Grove Landing" has been approved by the Street Department of the City of Muscle Shoals, Alabama, and that the plat is correct and true to the original plat on file in the City Clerk's Office.

Witness my hand and the seal of the City of Muscle Shoals, Alabama, this 22 day of August, 2020.

Richard L. Wilburn  
 City Clerk

STATE OF ALABAMA  
 COUNTY OF COLBERT  
 CERTIFICATE OF APPROVAL OF WATER SYSTEM

I hereby certify that the subdivision plat for "Grove Landing" has been approved by the Water System of the City of Muscle Shoals, Alabama, and that the plat is correct and true to the original plat on file in the City Clerk's Office.

Witness my hand and the seal of the City of Muscle Shoals, Alabama, this 22 day of August, 2020.

Richard L. Wilburn  
 City Clerk

STATE OF ALABAMA  
 COUNTY OF COLBERT  
 CERTIFICATE OF APPROVAL FOR THE RECORDS

I hereby certify that the subdivision plat for "Grove Landing" has been approved by the Records Department of the City of Muscle Shoals, Alabama, and that the plat is correct and true to the original plat on file in the City Clerk's Office.

Witness my hand and the seal of the City of Muscle Shoals, Alabama, this 22 day of August, 2020.

Richard L. Wilburn  
 City Clerk

STATE OF ALABAMA  
 COUNTY OF COLBERT  
 CERTIFICATE OF APPROVAL OF NATURAL GAS SYSTEMS

I hereby certify that the subdivision plat for "Grove Landing" has been approved by the Natural Gas Systems of the City of Muscle Shoals, Alabama, and that the plat is correct and true to the original plat on file in the City Clerk's Office.

Witness my hand and the seal of the City of Muscle Shoals, Alabama, this 22 day of August, 2020.

Richard L. Wilburn  
 City Clerk

STATE OF ALABAMA  
 COUNTY OF COLBERT  
 CERTIFICATE OF PRIVATE ADJUDICATOR

I hereby certify that the subdivision plat for "Grove Landing" has been approved by the Private Adjudicator of the City of Muscle Shoals, Alabama, and that the plat is correct and true to the original plat on file in the City Clerk's Office.

Witness my hand and the seal of the City of Muscle Shoals, Alabama, this 22 day of August, 2020.

Richard L. Wilburn  
 City Clerk

STATE OF ALABAMA  
 COUNTY OF COLBERT  
 CERTIFICATE OF APPROVAL OF ELECTRIC DEPARTMENT

I hereby certify that the subdivision plat for "Grove Landing" has been approved by the Electric Department of the City of Muscle Shoals, Alabama, and that the plat is correct and true to the original plat on file in the City Clerk's Office.

Witness my hand and the seal of the City of Muscle Shoals, Alabama, this 22 day of August, 2020.

Richard L. Wilburn  
 City Clerk

STATE OF ALABAMA  
 COUNTY OF COLBERT  
 CERTIFICATE OF APPROVAL OF THE COUNTY ENGINEER

I hereby certify that the subdivision plat for "Grove Landing" has been approved by the County Engineer of the City of Muscle Shoals, Alabama, and that the plat is correct and true to the original plat on file in the City Clerk's Office.

Witness my hand and the seal of the City of Muscle Shoals, Alabama, this 22 day of August, 2020.

Richard L. Wilburn  
 City Clerk

STATE OF ALABAMA  
 COUNTY OF COLBERT  
 PLANNING CERTIFICATE

I, Richard L. Wilburn, Planning Commission member for the City of Muscle Shoals, Alabama, hereby certify that the subdivision plat for "Grove Landing" has been approved by the Planning Commission of the City of Muscle Shoals, Alabama, and that the plat is correct and true to the original plat on file in the City Clerk's Office.

Witness my hand and the seal of the City of Muscle Shoals, Alabama, this 22 day of August, 2020.

Richard L. Wilburn  
 Planning Commission member

STATE OF ALABAMA  
 COUNTY OF COLBERT  
 CERTIFICATE OF APPROVAL OF THE BOARD OF SUPERVISORS

I hereby certify that the subdivision plat for "Grove Landing" has been approved by the Board of Supervisors of the City of Muscle Shoals, Alabama, and that the plat is correct and true to the original plat on file in the City Clerk's Office.

Witness my hand and the seal of the City of Muscle Shoals, Alabama, this 22 day of August, 2020.

Richard L. Wilburn  
 Board of Supervisors member



STATE OF ALABAMA  
 COUNTY OF COLBERT  
 DESIGN CERTIFICATE

I, Ricky A. Veal, a duly licensed Professional Land Surveyor in the State of Alabama, hereby certify that the subdivision plat for "Grove Landing" has been approved by me and that the plat is correct and true to the original plat on file in the City Clerk's Office.

Witness my hand and the seal of the City of Muscle Shoals, Alabama, this 22 day of August, 2020.

Ricky A. Veal  
 Professional Land Surveyor

STATE OF ALABAMA  
 COUNTY OF COLBERT  
 APPROVAL CERTIFICATE

I, Ricky A. Veal, a duly licensed Professional Land Surveyor in the State of Alabama, hereby certify that the subdivision plat for "Grove Landing" has been approved by me and that the plat is correct and true to the original plat on file in the City Clerk's Office.

Witness my hand and the seal of the City of Muscle Shoals, Alabama, this 22 day of August, 2020.

Ricky A. Veal  
 Professional Land Surveyor

STATE OF ALABAMA  
 COUNTY OF COLBERT  
 CERTIFICATE OF APPROVAL OF THE CITY ENGINEER

I, Ricky A. Veal, a duly licensed Professional Land Surveyor in the State of Alabama, hereby certify that the subdivision plat for "Grove Landing" has been approved by me and that the plat is correct and true to the original plat on file in the City Clerk's Office.

Witness my hand and the seal of the City of Muscle Shoals, Alabama, this 22 day of August, 2020.

Ricky A. Veal  
 Professional Land Surveyor

STATE OF ALABAMA  
 COUNTY OF COLBERT  
 CERTIFICATE OF APPROVAL OF THE COUNTY ENGINEER

I, Ricky A. Veal, a duly licensed Professional Land Surveyor in the State of Alabama, hereby certify that the subdivision plat for "Grove Landing" has been approved by me and that the plat is correct and true to the original plat on file in the City Clerk's Office.

Witness my hand and the seal of the City of Muscle Shoals, Alabama, this 22 day of August, 2020.

Ricky A. Veal  
 Professional Land Surveyor

**HAYS SURVEYING**  
 RICKY A. HAYS, PLS  
 1755 EAST 17TH ST.  
 MUSCLE SHOALS, ALABAMA 35690  
 PHONE (205) 323-2222

SCALE: 1" = 100 FEET  
 DRAWING: E.L.H.  
 CHECKED: R.H.H.

DATE: 08/20/2020  
 DRAWING NAME: 2020-19.4  
 REVISION: