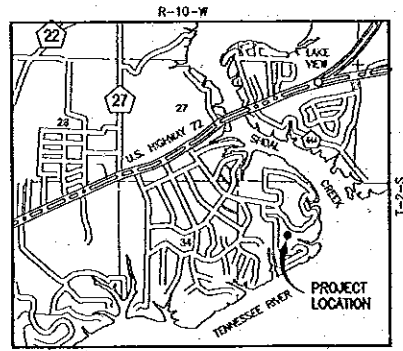
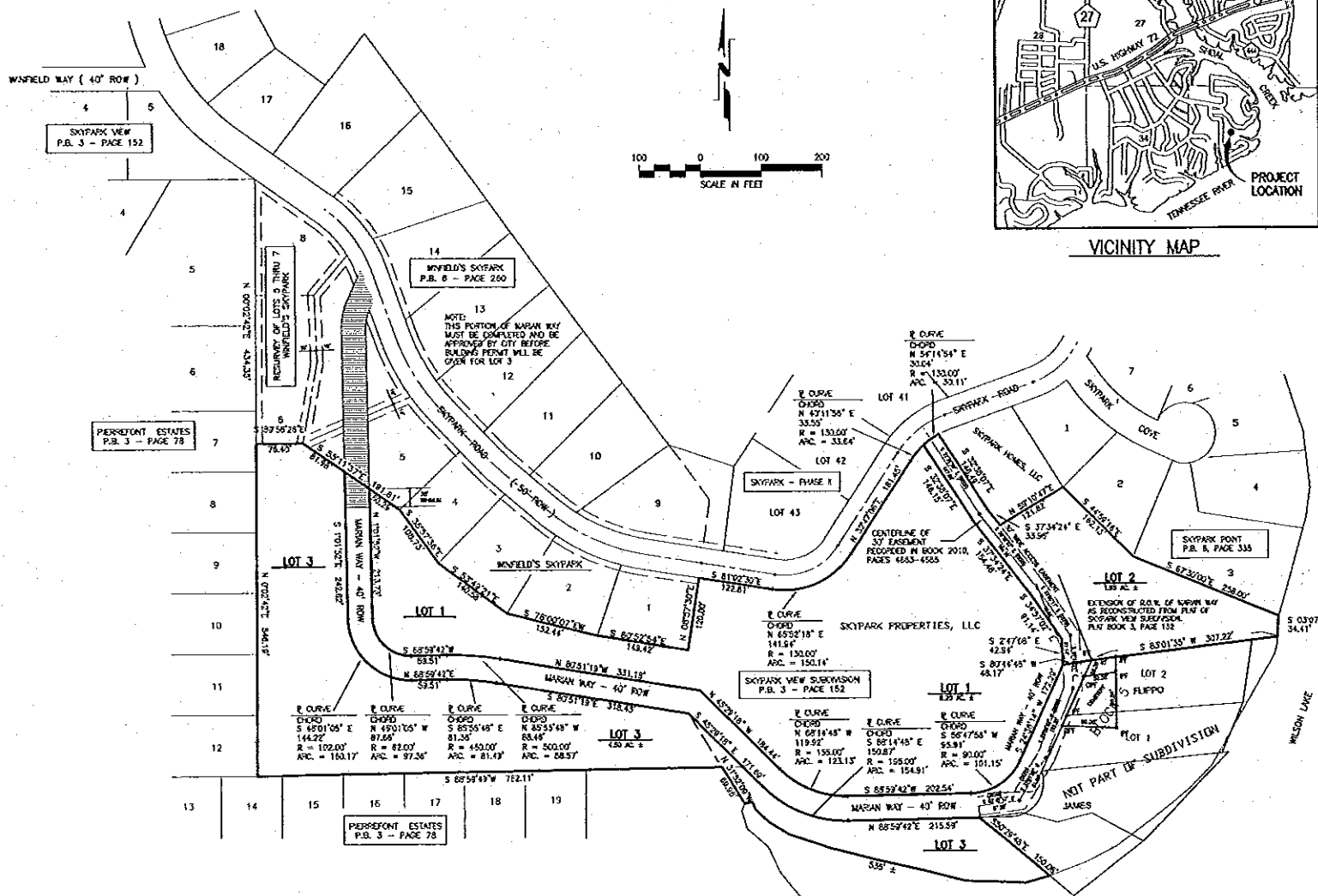


MARIAN VIEW

SECTION 35, T-2-S, R-10-W
(11.53 AC. ±)



VICINITY MAP

STATE OF ALABAMA
COUNTY OF LAUDERDALE

I, Ronnie E. Wigninton, a registered land surveyor in said State and County, hereby certify that I have surveyed that certain tract of land designated as MARIAN VIEW on the annexed plat, situated in Section 35, T-2-S, R-10-W in Lauderdale County, Alabama. I have subdivided said tract showing the easements therein, giving the bearings and lengths of each line, as well as the size of the tracts. I further certify that the annexed plat is a true and correct plot of said subdivision and shows the proper relationship to the U.S. Government Survey of Public Lands in the State of Alabama.

I hereby certify/state that all parts of this survey and drawing have been completed in accordance with the requirements of the Minimum Technical Standards for the Practice of Land Surveying in the State of Alabama.

Given under my hand and seal, this the 12th day of JANUARY, 2012

Ronnie E. Wigninton
Ronnie E. Wigninton
Alabama Registration No. 15918

STATE OF ALABAMA
COUNTY OF LAUDERDALE

I, Kelly W. Allen, duly authorized officer of SKYPARK PROPERTIES, LLC, owner of the property platted on the annexed plat and designated as MARIAN VIEW, do hereby accept and expressly adopt said plat as the official record of record, and in consideration of the respective benefits to come to us, our successors, and assigns, do hereby grant and convey to the City of Florence, Alabama, the County of Lauderdale, its successors and assigns, the easements shown hereon for electric, telephone, water, gas and sewer lines, and also ingress and egress, conveying the privileges necessary for the installation and maintenance of such utilities over the respective easements, including the right to cut and clear trees or parts thereof or other objects that may injure or endanger utility lines.

Given under my hand and seal, this the 13th day of JANUARY, 2012

Kelly W. Allen
Kelly W. Allen, Manager

STATE OF ALABAMA
COUNTY OF LAUDERDALE

I, the undersigned, a notary public in said State and County, hereby certify that Kelly W. Allen, whose name is signed to the foregoing plat and who is known by me, acknowledged on this date that being informed of the contents of said plat, executed the same voluntarily on the day the same bears date.

Given under my hand and seal, this the 13th day of JANUARY, 2012

William B. Bolton, III
Notary Public
MY COMMISSION EXPIRES 11-04-12

STATE OF ALABAMA
COUNTY OF LAUDERDALE

Approved for recording by the City Engineer, City of Florence, Alabama. This the 21st day of JANUARY, 2012

William B. Bolton, III
William B. Bolton, III, City Engineer
City of Florence, AL

CERTIFICATE OF APPROVAL BY THE E911 BOARD

The undersigned, as authorized by the Lauderdale County E911 Board, Alabama, hereby approved the within plat for the recording of the same in the Probate Office of Lauderdale County, Alabama, this 22nd day of FEB, 2012

Bryce S. Taylor
E911 Director

CERTIFICATE OF APPROVAL BY THE LAUDERDALE COUNTY FLOOD MANAGEMENT DEPARTMENT

The undersigned as authorized by the Lauderdale County Flood Management Department, Alabama, hereby approved the within plat for the recording of same in the Probate Office of Lauderdale County, Alabama, this 6th day of FEB, 2012

Ken Alford
Lauderdale County Flood Management Director

STATE OF ALABAMA
COUNTY OF LAUDERDALE

Approved for recording by the County Engineer, County of Lauderdale, Alabama. This the 6th day of FEB, 2012

Ken Alford
Ken Alford, County Engineer
Lauderdale County, AL

STATE OF ALABAMA
COUNTY OF LAUDERDALE

Approved for recording by the Planning Commission, City of Florence, Alabama, this the 11th day of JANUARY, 2012

James H. ...
Chairman
Florence Planning Commission

STATE OF ALABAMA
COUNTY OF LAUDERDALE

The lot(s) on this plat are subject to approval or deletion by the Lauderdale LHD. The approvals may contain certain conditions pertaining to the onsite wastewater treatment system(s) that could restrict the use of the lot(s) or obligate owners to special maintenance and reporting requirements. These conditions are on file with the said health department and are made a part of this plat as if set out hereon.

This the 11th day of JANUARY, 2012

James H. ...
Lauderdale County Health Department

MINIMUM BUILDING SETBACKS
25' FRONT
10' SIDE
10' REAR

NOTE:
15' UTILITY EASEMENT
ALONG AND ADJACENT TO ALL
RIGHTS-OF-WAY

STATE OF ALABAMA
COUNTY OF LAUDERDALE

I, Deway D. Mitchell, Probate Judge, Lauderdale County, Alabama, hereby certify that the attached plat of MARIAN VIEW was duly filed in the Office of the Judge of Probate of Lauderdale County, Alabama in Book 17 Page 330 This the 6th day of JANUARY, 2012

Deway D. Mitchell
Deway D. Mitchell, Probate Judge, Lauderdale Co., AL

SKYPARK SUBDIVISION PHASE I LAUDERDALE COUNTY, ALABAMA			
PRICE & RIDER ENGINEERING, INC. 410 WEST TENNESSEE STREET FLORENCE, ALABAMA PH. (256) 768-8974 FAX (256) 768-8251			
DRAWN	R.W.	SCALE	SHEET
CHICKER	D.C.P.	SCALE 1"=100'	1
REVISIONS	11-210-FINAL	OF 1 SHEETS	