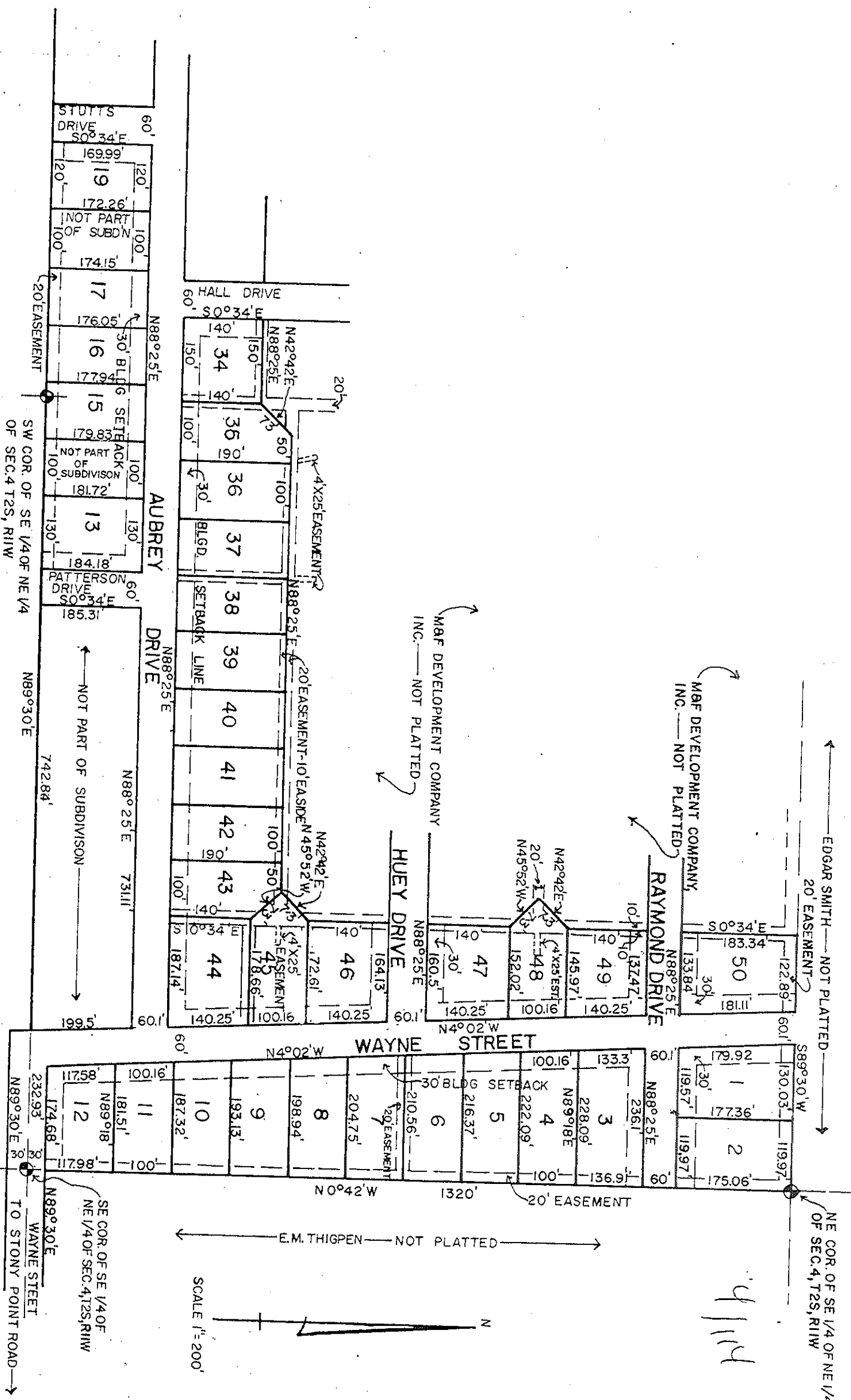




← COLLINS E. STUTTS — NOT PLATTED →

← MARVIN PATTERSON — NOT PLATTED →



SW COR OF SE 1/4 OF NE 1/4 OF SEC. 4 T2S, R11W

N89°30'E

742.84'

NOT PART OF SUBDIVISION

N88°25'E

731.11'

N89°30'E

232.93'

NE 1/4 OF SE 1/4 OF NE 1/4 OF SEC. 4 T2S, R11W

WAYNE STREET

TO STONY POINT ROAD

← EDGAR SMITH — NOT PLATTED →

20' EASEMENT

N88°25'E

122.89'

133.84'

137.47'

145.97'

152.02'

160.5'

172.61'

178.66'

187.14'

184.13'

190.16'

198.94'

204.75'

210.56'

216.37'

222.09'

228.09'

236.1'

242.09'

248.09'

254.09'

260.09'

266.09'

272.09'

278.09'

284.09'

290.09'

296.09'

302.09'

308.09'

314.09'

320.09'

326.09'

332.09'

338.09'

344.09'

350.09'

356.09'

362.09'

368.09'

374.09'

380.09'

386.09'

392.09'

398.09'

404.09'

410.09'

416.09'

422.09'

428.09'

434.09'

440.09'

446.09'

452.09'

458.09'

464.09'

470.09'

476.09'

482.09'

488.09'

494.09'

500.09'

506.09'

512.09'

518.09'

524.09'

530.09'

536.09'

542.09'

548.09'

554.09'

560.09'

566.09'

572.09'

578.09'

584.09'

590.09'

596.09'

602.09'

608.09'

614.09'

620.09'

626.09'

632.09'

638.09'

644.09'

650.09'

656.09'

662.09'

668.09'

674.09'

680.09'

686.09'

692.09'

698.09'

704.09'

710.09'

716.09'

722.09'

728.09'

734.09'

740.09'

746.09'

752.09'

758.09'

764.09'

770.09'

776.09'

782.09'

788.09'

794.09'

800.09'

806.09'

812.09'

818.09'

824.09'

830.09'

836.09'

842.09'

848.09'

854.09'

860.09'

866.09'

872.09'

878.09'

884.09'

890.09'

896.09'

902.09'

908.09'

914.09'

920.09'

926.09'

932.09'

938.09'

944.09'

950.09'

956.09'

962.09'

968.09'

974.09'

980.09'

986.09'

992.09'

998.09'

1004.09'

1010.09'

1016.09'

1022.09'

1028.09'

1034.09'

1040.09'

1046.09'

1052.09'

1058.09'

1064.09'

1070.09'

1076.09'

1082.09'

1088.09'

1094.09'

1100.09'

1106.09'

1112.09'

1118.09'

1124.09'

1130.09'

1136.09'

1142.09'

1148.09'

1154.09'

1160.09'

1166.09'

1172.09'

1178.09'

1184.09'

1190.09'

1196.09'

1202.09'

1208.09'

1214.09'

1220.09'

1226.09'

1232.09'

1238.09'

1244.09'

1250.09'

1256.09'

1262.09'

1268.09'

1274.09'

1280.09'

1286.09'

1292.09'

1298.09'

1304.09'

1310.09'

1316.09'

1322.09'

1328.09'

1334.09'

1340.09'

1346.09'

1352.09'

1358.09'

1364.09'

1370.09'

1376.09'

1382.09'

1388.09'

1394.09'

1400.09'

1406.09'

1412.09'

1418.09'

1424.09'

1430.09'

1436.09'

1442.09'

1448.09'

1454.09'

1460.09'

1466.09'

1472.09'

1478.09'

1484.09'

1490.09'

1496.09'

1502.09'

1508.09'

1514.09'

1520.09'

1526.09'

1532.09'

1538.09'

1544.09'

1550.09'

1556.09'

1562.09'

1568.09'

1574.09'

1580.09'

1586.09'

1592.09'

1598.09'

1604.09'

1610.09'

1616.09'

1622.09'

1628.09'

1634.09'

1640.09'

1646.09'

1652.09'

1658.09'

1664.09'

1670.09'

1676.09'

1682.09'

1688.09'