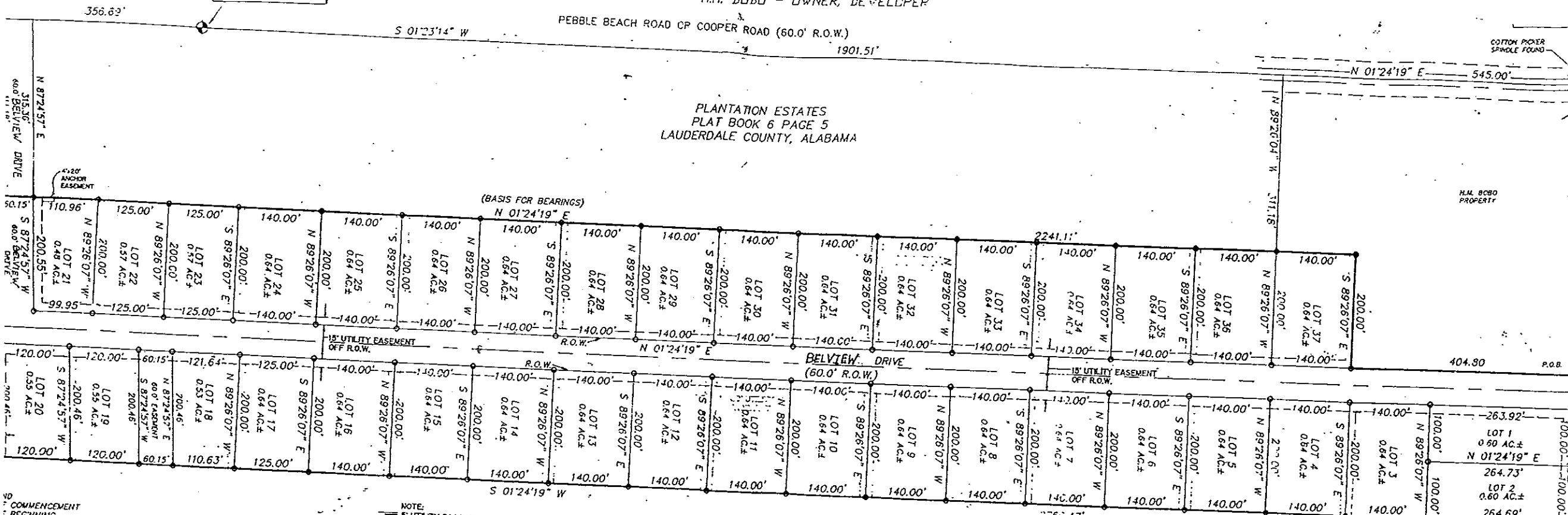


# 6-306

PLANTATION ESTATES ADDITION NO. ONE  
 PART OF THE EAST 1/2 OF SECTION 35, TOWNSHIP 2 SOUTH, RANGE 9 WEST  
 PART OF THE NORTHEAST 1/4 OF SECTION 2, TOWNSHIP 3 SOUTH, RANGE 9 W  
 LAUDERDALE COUNTY, ALABAMA  
 H.M. BOBO - OWNER, DEVELOPER

NE CORNER OF THE NE 1/4  
 OF FRACTIONAL SECTION 2,  
 T-3-S, R-9-W, LAUDERDALE  
 COUNTY, ALABAMA



NOTE:  
 S' UTILITY EASEMENT OFF EACH SIDE OF EACH SIDE LOT LINE

SCALE: 1"=100'

DEED NORTH

0 50 100 200

ND COMMENCEMENT  
 BEGINNING  
 WAY  
 WE  
 N PIN SET AND CAPPED  
 O UTILITY LINES  
 OLE

NORTH BASED ON PLANTATION ESTATES SUBDIVISION PLAT 45  
 SAME IS RECORDED IN THE OFFICE OF THE JUDGE OF PROBATE  
 LAUDERDALE COUNTY, ALABAMA IN PLAT BOOK 6, PAGE 3

STATE OF ALABAMA  
 COUNTY OF LAUDERDALE

Commissioner, Lauderdale County  
 1999

*[Signature]*  
 Chairman, County Commission  
 Lauderdale County, AL

AS PROPRIETORS HAVE CAUSED THE LAND

STATE OF ALABAMA  
 COUNTY OF LAUDERDALE

I, Dawey D. Mitchell, Probate Judge, Lauderdale County, Alabama, hereby certify that this plat of PLANTATION ESTATES ADDITION NO. ONE, was duly filed in the Office of the Judge of Probate of Lauderdale County, Alabama in Book 6, Page 306. This 1st day of February, 1999.

*[Signature]*  
 Dawey D. Mitchell, Probate  
 Judge, Lauderdale Co. AL

CERTIFICATE OF APPROVAL BY THE LAUDERDALE COUNTY HEALTH DEPARTMENT  
 APPROVED BY THE LAUDERDALE COUNTY HEALTH DEPARTMENT, HEREBY