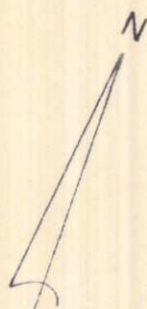
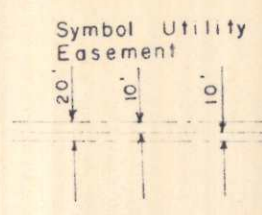
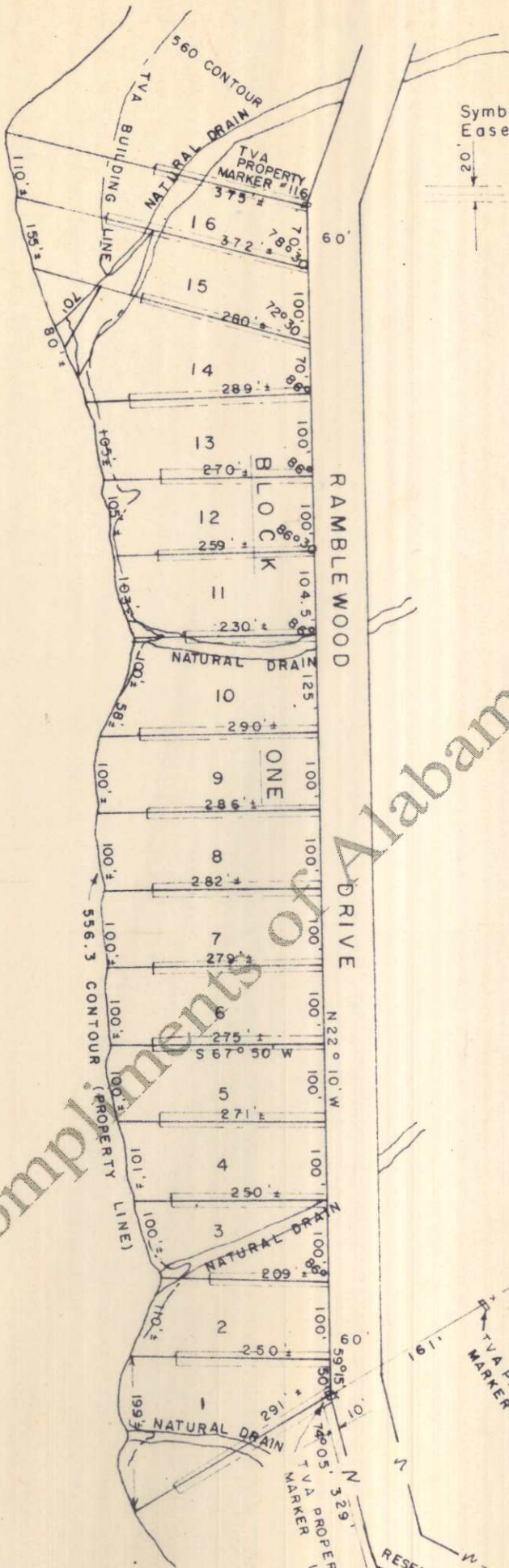


WHEELER LAKE



Plat showing at reduced scale  
 RAMBLEWOOD SHORES, Block One,  
 according to the plat thereof  
 as recorded in the Office of  
 the Judge of Probate, Lauderdale  
 County, Alabama in Plat Book 4  
 page 73.

Compliments of Alabama Land Services

S. E. COR. OF S. W. 1/4  
 OF S. E. 1/4,  
 SECTION 18, TWP. 35 R7W

LAMBS FERRY ROAD

