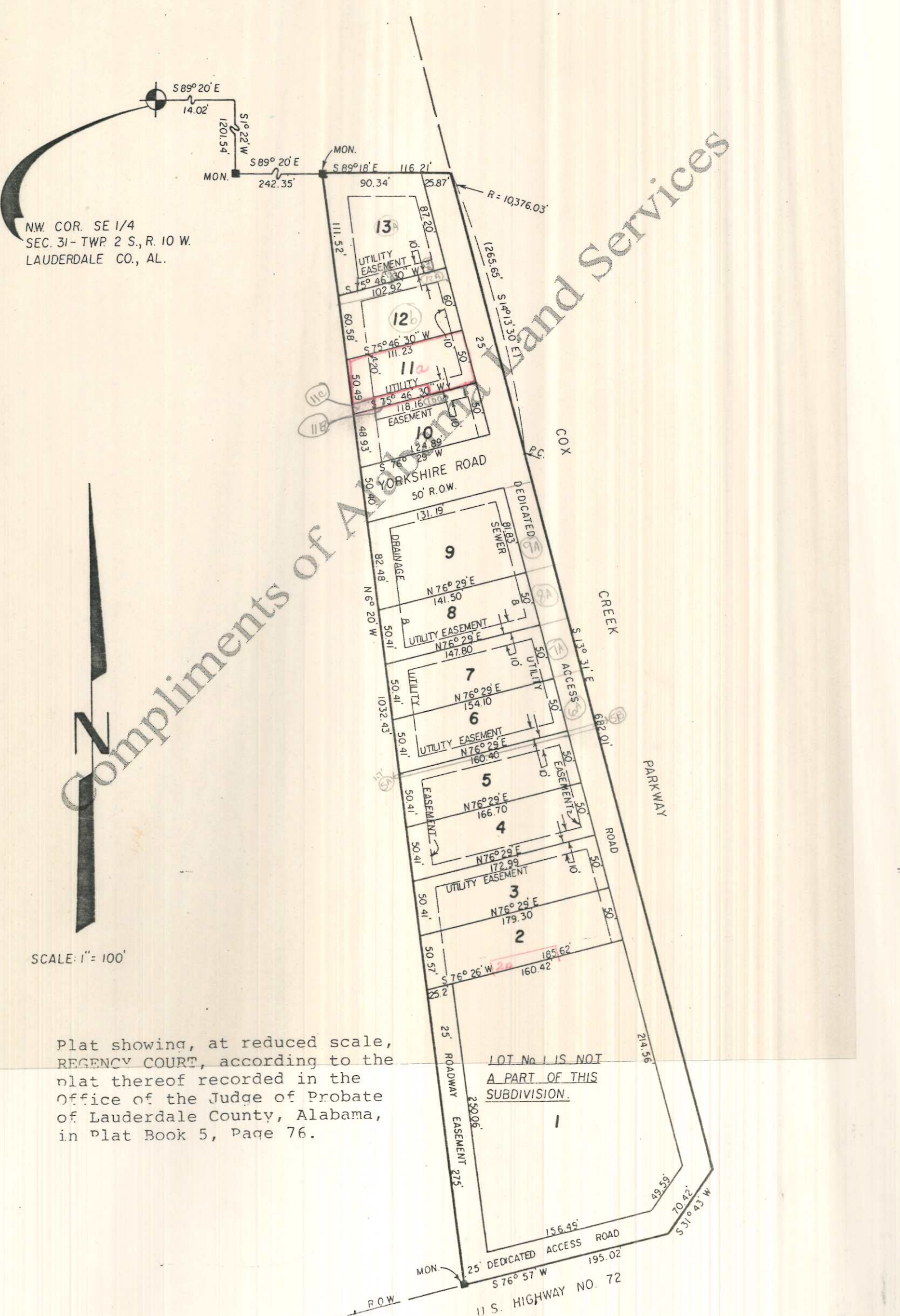


NW COR. SE 1/4  
 SEC. 31 - TWP 2 S., R. 10 W.  
 LAUDERDALE CO., AL.

SCALE: 1" = 100'

Compliments of **Alabama Land Services**

Plat showing, at reduced scale,  
 REGENCY COURT, according to the  
 plat thereof recorded in the  
 Office of the Judge of Probate  
 of Lauderdale County, Alabama,  
 in Plat Book 5, Page 76.



LOT No. 1 IS NOT  
 A PART OF THIS  
 SUBDIVISION.

11 S. HIGHWAY NO. 72  
 25' DEDICATED ACCESS ROAD  
 195.02  
 S 76° 57' W  
 R.O.W.