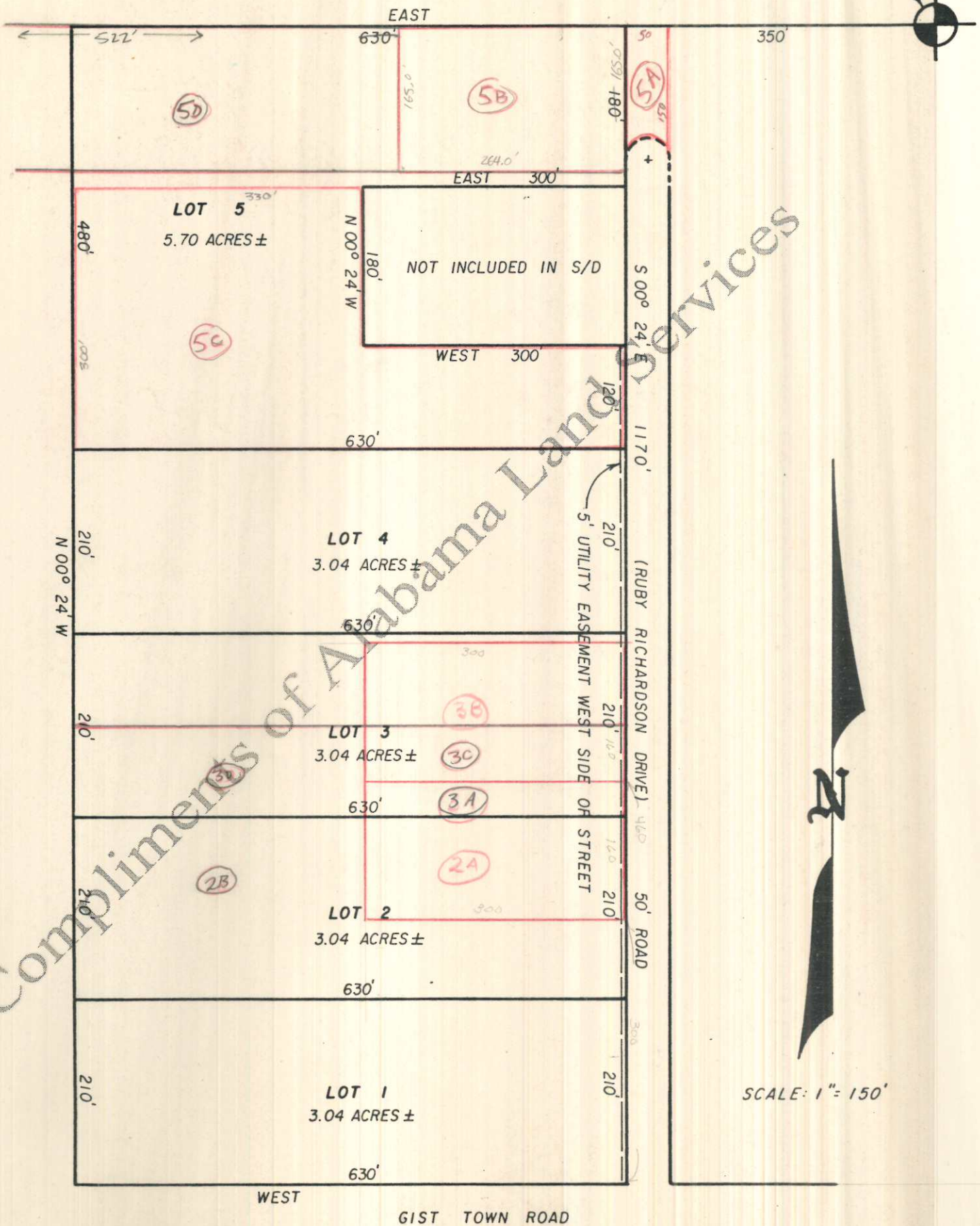


N.E. CORNER, NE 1/4 of NW 1/4,  
SECTION 7, T-1-S, R-9-W,  
LAUDERDALE COUNTY, ALABAMA.



Compliments of Alabama Land Services

Plat showing, at reduced scale, RICHARDSON SUBDIVISION, according to the plat thereof recorded in the Office of the Judge of Probate of Lauderdale County, Alabama, in Plat Book 5, Page 61.