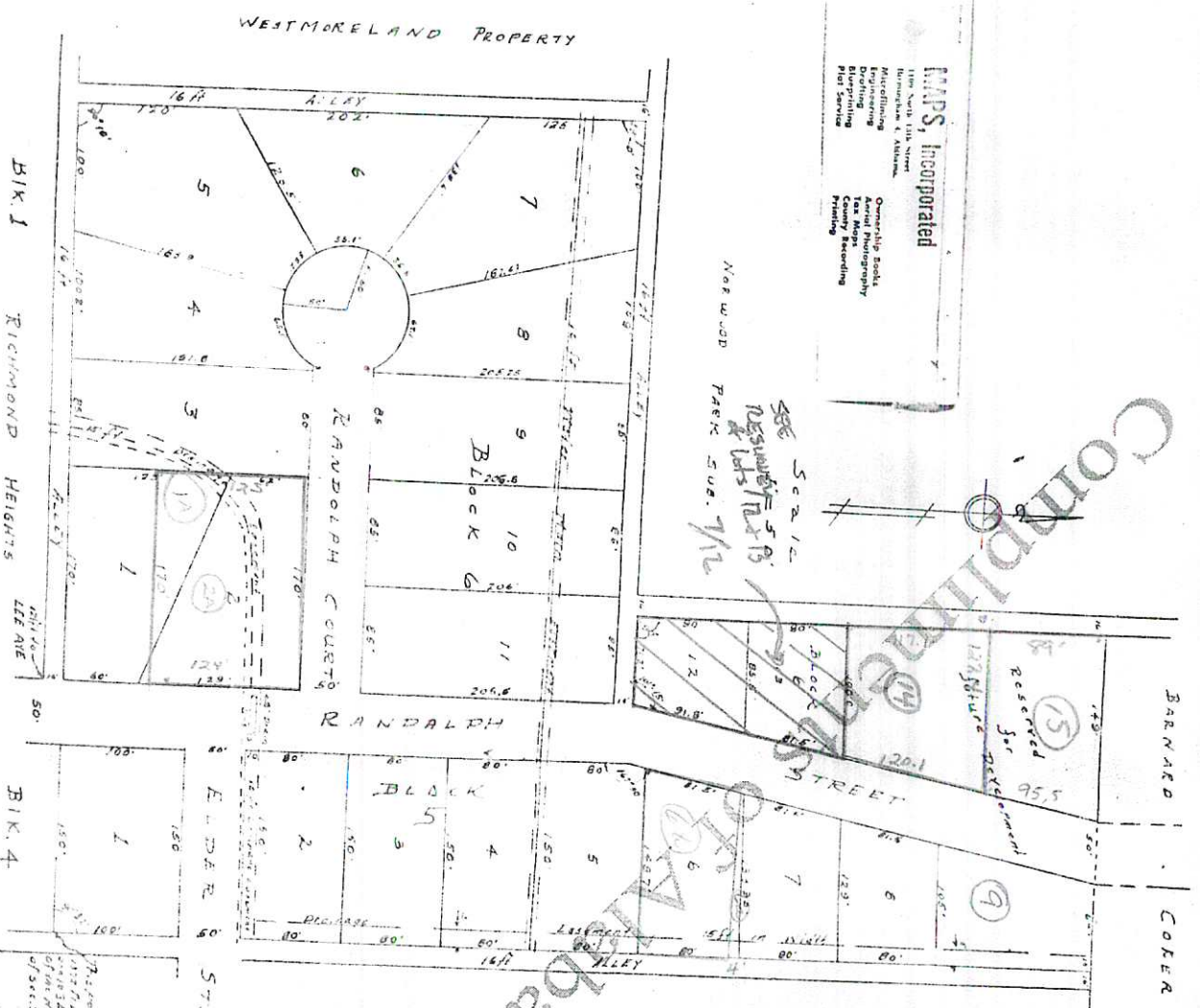


**MAPS, Incorporated**  
1000 1/2 S. 10th Street  
Minneapolis, Minnesota  
Municipal & Commercial  
Engineering  
Planning  
Surveying  
City & County  
County Recording  
Title  
Tax Maps  
General  
City & County  
Planning



# RICHMOND HEIGHTS

ADDITION No 1  
IN  
Florence, Oklahoma

202-179

State of Oklahoma  
LeFlore County  
I, the undersigned, Eugene W. Ziegler, registered and sworn Surveyor,  
do hereby certify that the above plat was prepared and approved by me  
and filed with the proper authorities in accordance with the provisions  
of the laws of the State of Oklahoma, and that the same is a true and  
correct copy of the original as the same appears on file in my  
office.

Given under my hand and seal of office at Muskogee, Oklahoma,  
this 10th day of December, 1935.  
*Eugene W. Ziegler*  
Surveyor

State of Oklahoma  
LeFlore County  
We the undersigned, H. W. Hensley and W. L. Fry, owners of this property  
do hereby certify that the above plat was prepared and approved by  
us and filed with the proper authorities in accordance with the provisions  
of the laws of the State of Oklahoma, and that the same is a true and  
correct copy of the original as the same appears on file in our  
office.

Given under our hand and seal of office at Muskogee, Oklahoma,  
this 10th day of December, 1935.  
*H. W. Hensley*  
*W. L. Fry*  
Owners

State of Oklahoma  
LeFlore County  
I, the undersigned, Eugene W. Ziegler, registered and sworn Surveyor,  
do hereby certify that the above plat was prepared and approved by me  
and filed with the proper authorities in accordance with the provisions  
of the laws of the State of Oklahoma, and that the same is a true and  
correct copy of the original as the same appears on file in my  
office.

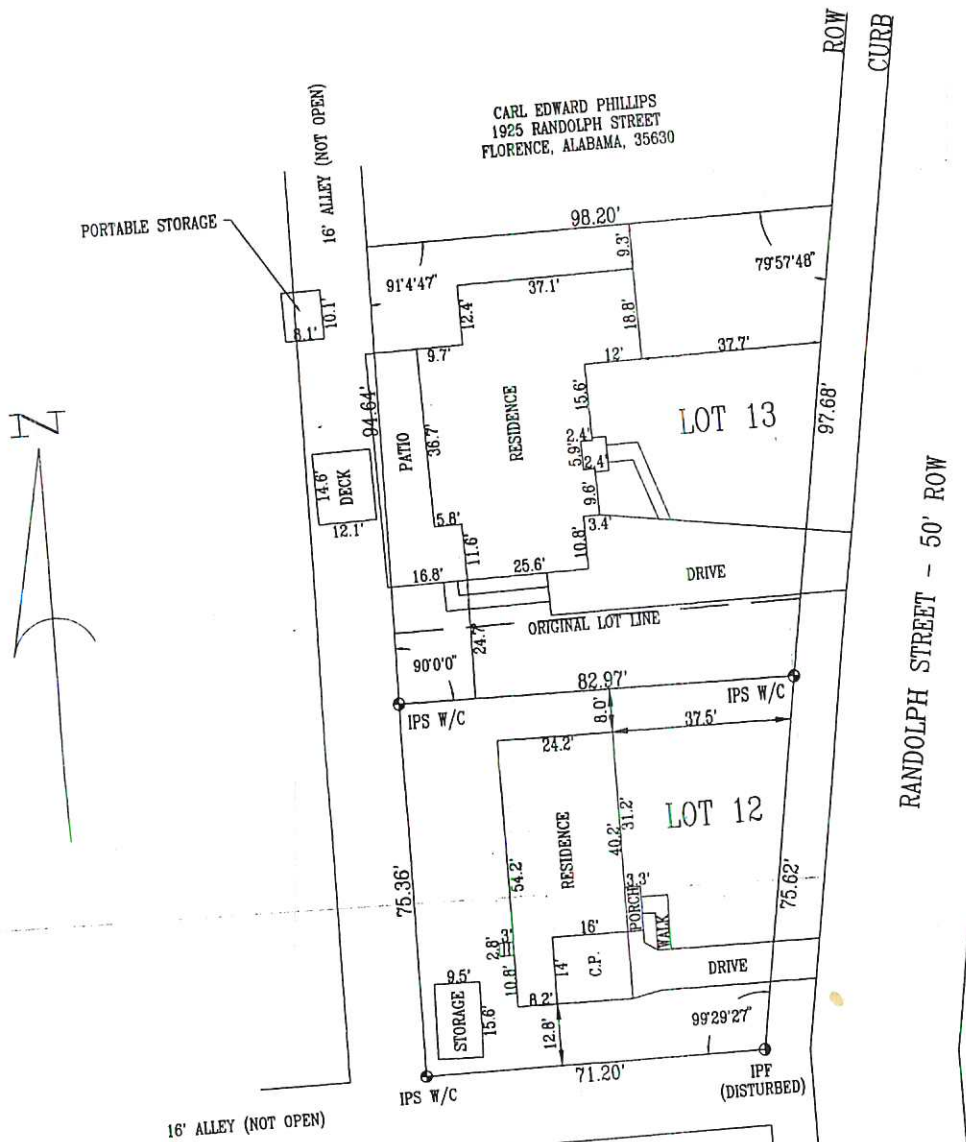
State of Oklahoma  
LeFlore County  
I, the undersigned, Eugene W. Ziegler, registered and sworn Surveyor,  
do hereby certify that the above plat was prepared and approved by me  
and filed with the proper authorities in accordance with the provisions  
of the laws of the State of Oklahoma, and that the same is a true and  
correct copy of the original as the same appears on file in my  
office.

1" = 150'

RESUBDIVISION OF  
 Lots 12 & 13 Block G  
 Richmond Hgts Addn 1

7-12

PART OF THE NORTHWEST 1/4 OF THE NORTHWEST  
 SECTION 3, TOWNSHIP 3 SOUTH, RANGE 11 WEST



LOT 11, BLOCK 6  
 RICHMOND HEIGHTS ADDITION #1  
 PLAT BOOK 2, PAGE 170

SUBJECT PROPERTY