

RICHMOND HEIGHTS BOOK

Subdivision of Part of the NE 1/4 of Section 3 T 3 R 11 W. LAUDERDALE COUNTY ALABAMA.

State of Alabama, Lauderdale County. I, the undersigned, Robert Goss, a Registered Land Surveyor, do hereby certify that I have surveyed the property as shown on the plat here with and that said Plat and Survey are a true and correct Subdivision of Same and shows the proper relation to the Government Survey.

Aug 29 1952 Robert Goss Surveyor

State of Alabama, Lauderdale County. I, the undersigned, Billy L. Hensley, Notary Public in and for said County in said State do hereby certify that I have seen the original Plat and Survey of the property as shown on the plat here with and that said Plat and Survey are a true and correct Subdivision of Same and shows the proper relation to the Government Survey.

Given at Florence, Alabama this 30th day of July 1952 Billy L. Hensley Notary Public

State of Alabama, Lauderdale County. I, the undersigned, A. Williams, Notary Public in and for said County in said State do hereby certify that I have seen the original Plat and Survey of the property as shown on the plat here with and that said Plat and Survey are a true and correct Subdivision of Same and shows the proper relation to the Government Survey.

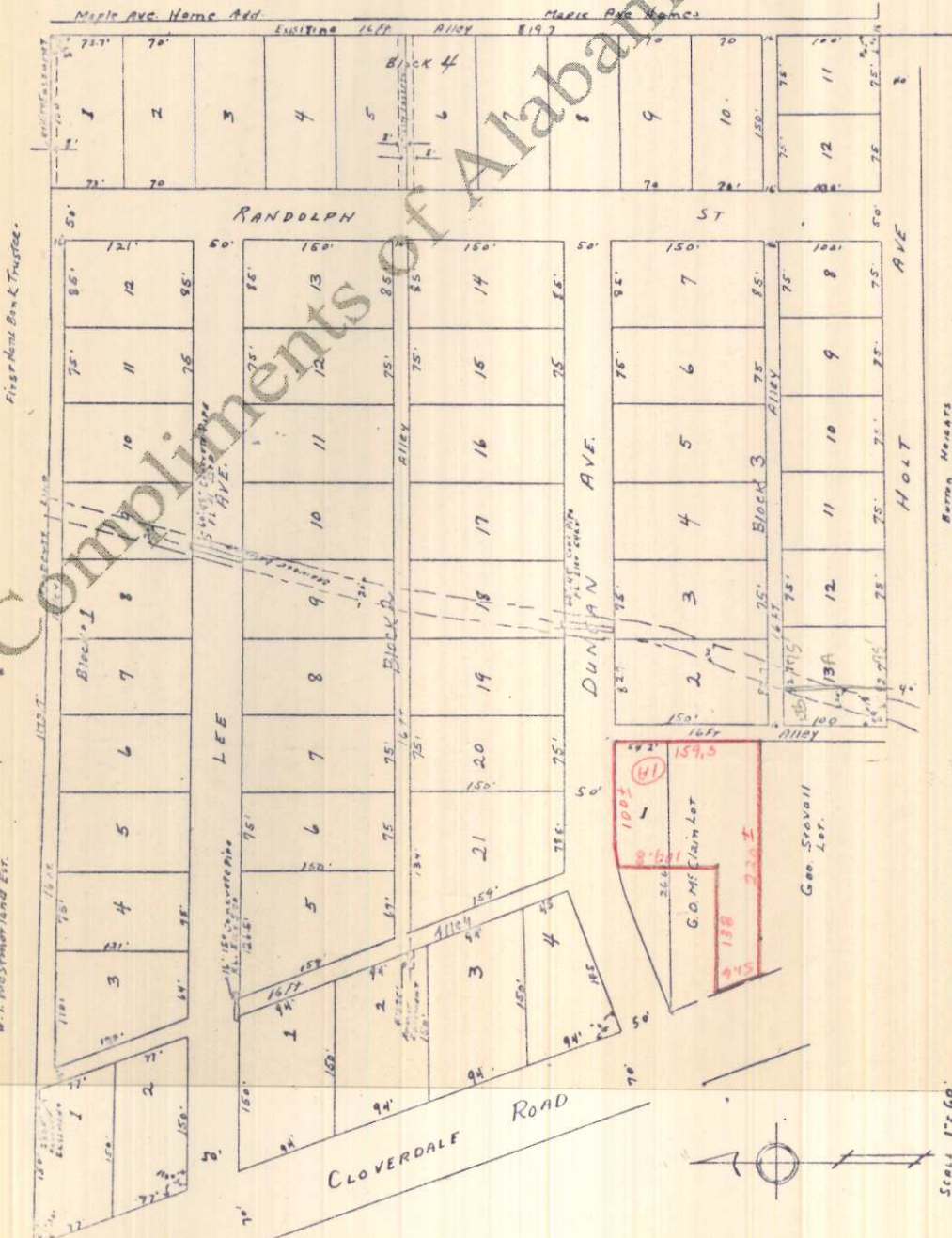
Given under my hand and official seal this 30th day of July 1952 A. Williams Notary Public

State of Alabama, Lauderdale County. I, the undersigned, Harmon K. Longshore, Judge of Probate of said County in said State do hereby certify that the adjoining Plat as filed in my office for recording and was duly recorded in New Plat Book No. 12 on Page 163 this the 4th day of August 1952

Harmon K. Longshore Judge of Probate

State of Alabama, Lauderdale County. Approved for recording by The City Engineer of Florence, Alabama, This the 4th day of August 1952

City Engineer



State of Alabama, Lauderdale County. Approved for recording by The Board of Commissioners of the City of Florence, Alabama, This the 4th day of August 1952

State of Alabama, Lauderdale County. Approved for recording by The Planning Commission of the City of Florence, Alabama, This the 30th day of July 1952

City Engineer

MAPS, Incorporated  
Microfilming  
Aerial Photography  
Engineering  
Surveying  
Printing  
Ownership Books  
Real Estate  
Title Insurance  
Plan Service