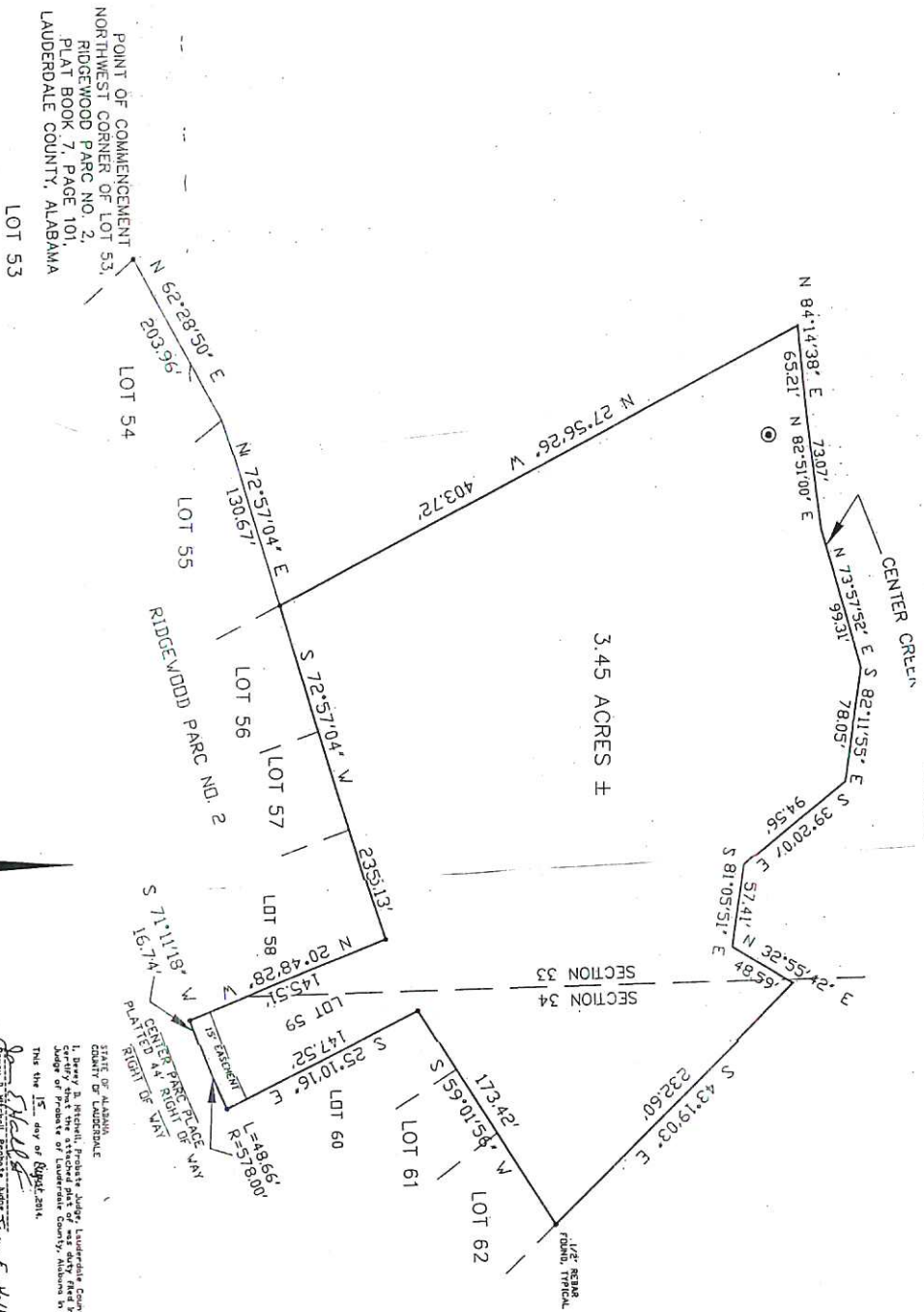




PLAT OF RESURVEY OF LOT 59, RIDGEWOOD PARC NO. 2,  
LOCATED IN SECTIONS 33 AND 34, T-2-S, R-11-W,  
LAUDERDALE COUNTY, ALABAMA



3.45 ACRES ±



STATE OF ALABAMA  
COUNTY OF LAUDERDALE  
Approved for recording by the County Engineer, County of Lauderdale,  
Alabama, this the 13<sup>th</sup> day of August 2014.

STATE OF ALABAMA  
COUNTY OF LAUDERDALE  
Approved for recording by the Planning Commission, City of Florence, Alabama,  
this the 22<sup>nd</sup> day of August 2014.

STATE OF ALABAMA  
COUNTY OF LAUDERDALE  
I, David B. Mitchell, Probate Judge, Lauderdale County, Alabama, hereby  
certify that I am the duly qualified and acting Probate Judge of Lauderdale County, Alabama in Book 11, Page 342.  
This the 15<sup>th</sup> day of August 2014.

STATE OF ALABAMA  
COUNTY OF LAUDERDALE  
I, David B. Mitchell, Probate Judge, Lauderdale County, Alabama, hereby  
certify that I am the duly qualified and acting Probate Judge of Lauderdale County, Alabama in Book 11, Page 342.  
This the 15<sup>th</sup> day of August 2014.

STATE OF ALABAMA  
COUNTY OF LAUDERDALE  
Approved for recording by the City Engineer, City of Florence, Alabama,  
this the 22<sup>nd</sup> day of August 2014.

STATE OF ALABAMA  
COUNTY OF LAUDERDALE  
Approved for recording by the City Engineer, City of Florence, Alabama,  
this the 22<sup>nd</sup> day of August 2014.

STATE OF ALABAMA  
COUNTY OF LAUDERDALE  
Approved for recording by the City Engineer, City of Florence, Alabama,  
this the 22<sup>nd</sup> day of August 2014.

STATE OF ALABAMA  
COUNTY OF LAUDERDALE  
Approved for recording by the City Engineer, City of Florence, Alabama,  
this the 22<sup>nd</sup> day of August 2014.

STATE OF ALABAMA  
COUNTY OF LAUDERDALE  
Approved for recording by the City Engineer, City of Florence, Alabama,  
this the 22<sup>nd</sup> day of August 2014.

STATE OF ALABAMA  
COUNTY OF LAUDERDALE  
Approved for recording by the City Engineer, City of Florence, Alabama,  
this the 22<sup>nd</sup> day of August 2014.

STATE OF ALABAMA  
COUNTY OF LAUDERDALE  
Approved for recording by the City Engineer, City of Florence, Alabama,  
this the 22<sup>nd</sup> day of August 2014.

STATE OF ALABAMA  
COUNTY OF LAUDERDALE  
Approved for recording by the City Engineer, City of Florence, Alabama,  
this the 22<sup>nd</sup> day of August 2014.

STATE OF ALABAMA  
COUNTY OF LAUDERDALE  
Approved for recording by the City Engineer, City of Florence, Alabama,  
this the 22<sup>nd</sup> day of August 2014.

STATE OF ALABAMA  
COUNTY OF LAUDERDALE  
Approved for recording by the City Engineer, City of Florence, Alabama,  
this the 22<sup>nd</sup> day of August 2014.

STATE OF ALABAMA  
COUNTY OF LAUDERDALE  
Approved for recording by the City Engineer, City of Florence, Alabama,  
this the 22<sup>nd</sup> day of August 2014.

STATE OF ALABAMA  
COUNTY OF LAUDERDALE  
Approved for recording by the City Engineer, City of Florence, Alabama,  
this the 22<sup>nd</sup> day of August 2014.

STATE OF ALABAMA  
COUNTY OF LAUDERDALE  
Approved for recording by the City Engineer, City of Florence, Alabama,  
this the 22<sup>nd</sup> day of August 2014.

STATE OF ALABAMA  
COUNTY OF LAUDERDALE  
Approved for recording by the City Engineer, City of Florence, Alabama,  
this the 22<sup>nd</sup> day of August 2014.



HAYS SURVEYING  
BERT A. HAYS, P.L.S.  
3802 EAST 17TH STREET  
LAUDERDALE COUNTY, ALABAMA 36862  
PHONE: (256) 383-2228

SCALE: 1" = 50'  
DRAWN BY: [Signature]  
CHECKED BY: [Signature]  
REVIEWED BY: [Signature]

DATE: 6/24/14

PLAT NO: 14-00000

BOOK: 11

PAGE: 342

DATE: 8/13/14

PLAT NO: 14-00000

BOOK: 11

PAGE: 342

DATE: 8/13/14

PLAT NO: 14-00000

BOOK: 11

PAGE: 342

DATE: 8/13/14

PLAT NO: 14-00000

BOOK: 11

PAGE: 342

DATE: 8/13/14

PLAT NO: 14-00000

BOOK: 11

PAGE: 342

DATE: 8/13/14

PLAT NO: 14-00000

BOOK: 11

PAGE: 342

DATE: 8/13/14

PLAT NO: 14-00000

BOOK: 11

PAGE: 342

DATE: 8/13/14

PLAT NO: 14-00000

BOOK: 11

PAGE: 342

DATE: 8/13/14

PLAT NO: 14-00000

BOOK: 11

PAGE: 342

DATE: 8/13/14

PLAT NO: 14-00000

BOOK: 11

PAGE: 342

DATE: 8/13/14

PLAT NO: 14-00000

BOOK: 11

PAGE: 342

DATE: 8/13/14

PLAT NO: 14-00000

BOOK: 11

PAGE: 342

DATE: 8/13/14

PLAT NO: 14-00000

BOOK: 11

PAGE: 342

DATE: 8/13/14

PLAT NO: 14-00000

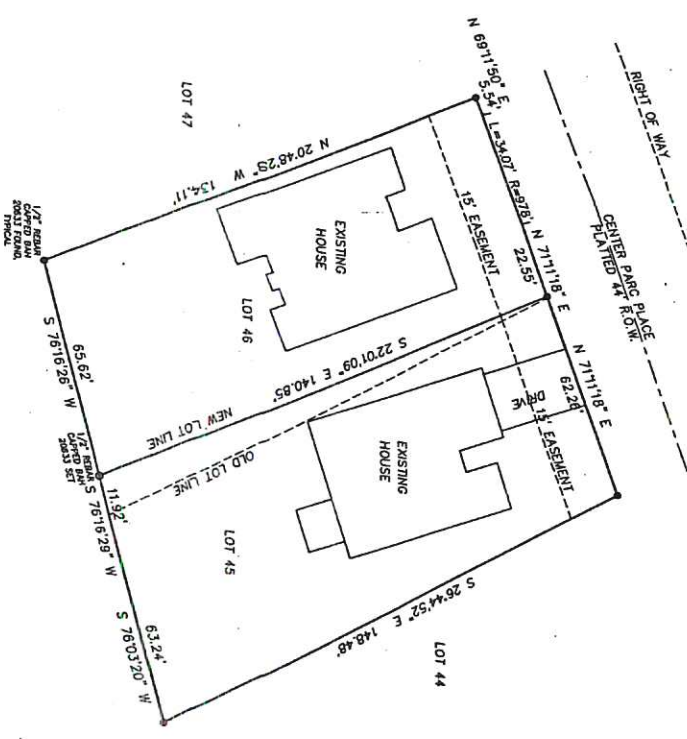
BOOK: 11

PAGE: 342

DATE: 8/13/14

PLAT NO: 14-00000

RESUBDIVISION OF LOTS 45 AND 46, RIDGEWOOD PARC NO. 2,  
LAUDERDALE COUNTY, ALABAMA  
FAMILY HOME BUILDERS, LLC - DEVELOPERS



NOTE: TBM IS ON THE NORTHWEST CORNER OF THE BASE OF AN ELECTRIC JUNCTION BOX LOCATED AT THE SOUTHWEST CORNER OF LOT 61 OF THIS SUBDIVISION  
TBM ELEVATION - 482.28

STATE OF ALABAMA  
COUNTY OF LAUDERDALE

I, Bert A. Hays, a Surveyor of Alabama, hereby certify that I have surveyed that certain tract of land designated as "RESUBDIVISION OF LOTS 45 AND 46, RIDGEWOOD PARC NO. 2," situated in Section 22, Township 2 South, Range 11 West, Lauderdale County, Alabama; that I have subdivided said tract of land and have shown the streets, alleys and public grounds and give the bearings and length, width and name of streets and easements shown, and have further shown the location of the land as plotted in the Government Survey of public lands in the State of Alabama.

I hereby state that in the hall of my firm, knowledge and belief of parts of this survey and drawing have been completed in accordance with the Standards for the Practice of Land Surveying in the State of Alabama.



WITNESS my hand this the 30th day of August, 2008.

STATE OF ALABAMA  
COUNTY OF LAUDERDALE

We, the undersigned, Family Home Builders, LLC, owners of the property, do hereby certify that we have designated as "RESUBDIVISION OF LOTS 45 AND 46, RIDGEWOOD PARC NO. 2," so hereby record in conformity with and in accordance with the provisions of the respective sections of law, our full, correct and complete, the survey and convey to the City of Florence, its successors, assigns and assigns, an easement of right-of-way over, under, across and above the streets and public roads and alleys shown hereon for public use, and we hereby certify that the same is for the use and benefit of the public and maintenance of said utilities over the respective right of way, including the right to cut and clear trees or parts thereof or other objects that may impede or cause delay in utility lines.

Signed and sealed in the presence of:

Witness: \_\_\_\_\_  
Notary: \_\_\_\_\_  
Notary Commission Expires: \_\_\_\_\_

STATE OF ALABAMA  
COUNTY OF LAUDERDALE

I, the undersigned, a Notary Public in and for the County of Lauderdale, do hereby certify that the persons whose names are signed to the foregoing plat and who are known to me, and who are subscribed on this plat, that being informed of the contents of said plat, executed the same voluntarily on the day the same were done.

Given under my hand and official seal, this 30th day of August, 2008.

Notary Public: \_\_\_\_\_  
My Commission Expires: \_\_\_\_\_

STATE OF ALABAMA  
COUNTY OF LAUDERDALE

I, Duany A. Mitchell, hereby certify that I am the duly authorized representative of the City of Florence, Alabama, in and for the County of Lauderdale, and I have read the contents of the above plat and find that the same are correct and true.

Witness my hand and official seal, this 30th day of August, 2008.

Notary: \_\_\_\_\_

HAYS SURVEYING

BERT A. HAYS, PLS  
1901 17TH ST.  
SHEFFIELD, ALABAMA 35660  
PHONE: (256) 383-2289

SCALE: 1" = 20'	DATE: 8/2/08
DRAWN: JB	DRAWING NAME: 08-182
CHECKED: BAH	REVISED:

114

114