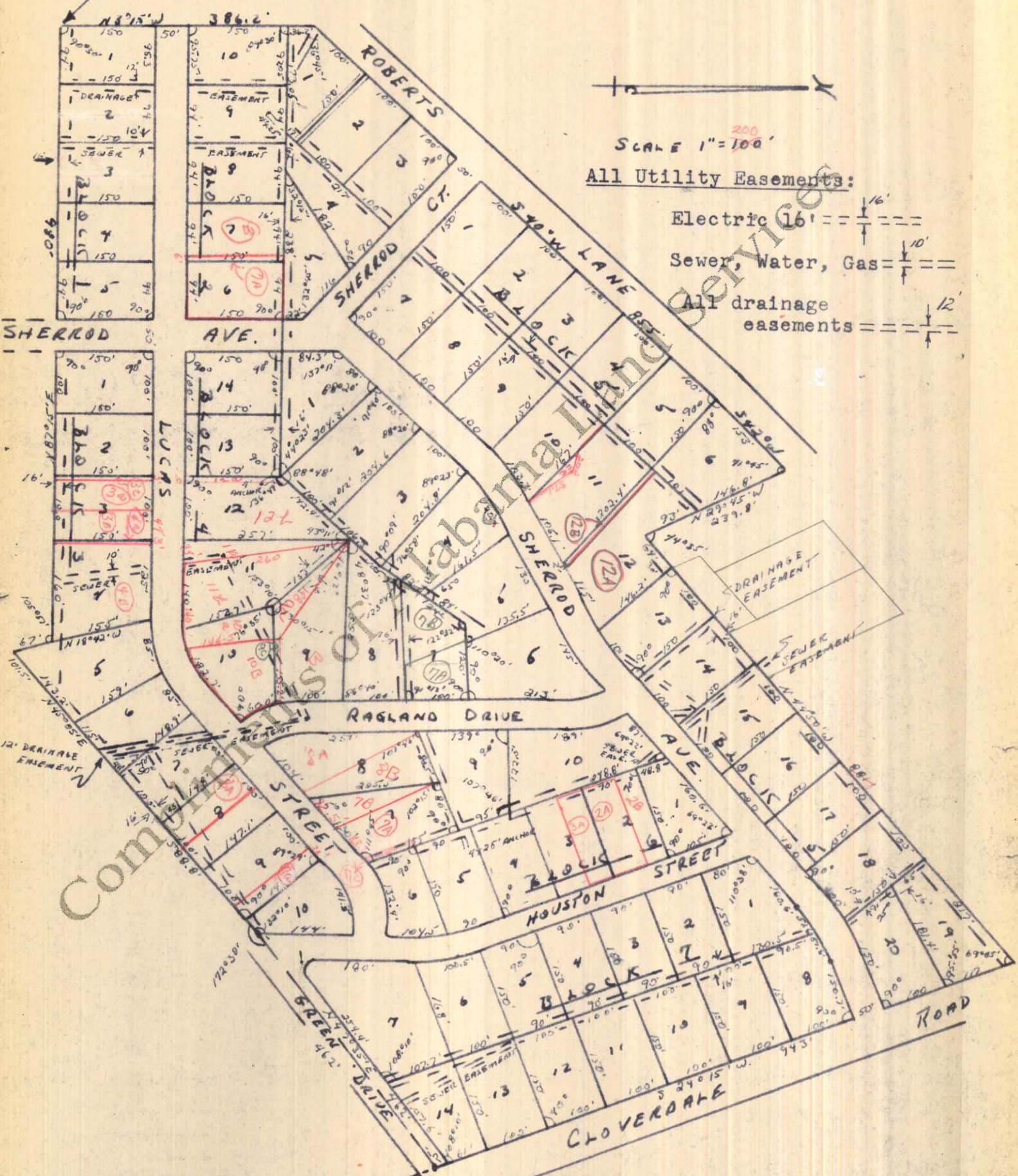


THIS POINT IS 615.0 FT. NORTH OF THE S.W. COR. OF SEC 34, T.2, R.11.W



SCALE 1" = 100'

All Utility Easements:

Electric 16' = $\frac{16}{16}$

Sewer, Water, Gas = $\frac{10}{10}$

All drainage easements = $\frac{12}{12}$

Plat showing, at reduced scale, RIDGEWOOD, a Subdivision in the City of Florence, Lauderdale County, Alabama, according to the plat thereof recorded in the office of the Judge of Probate of said County in Plat Book 3, at Page 20.