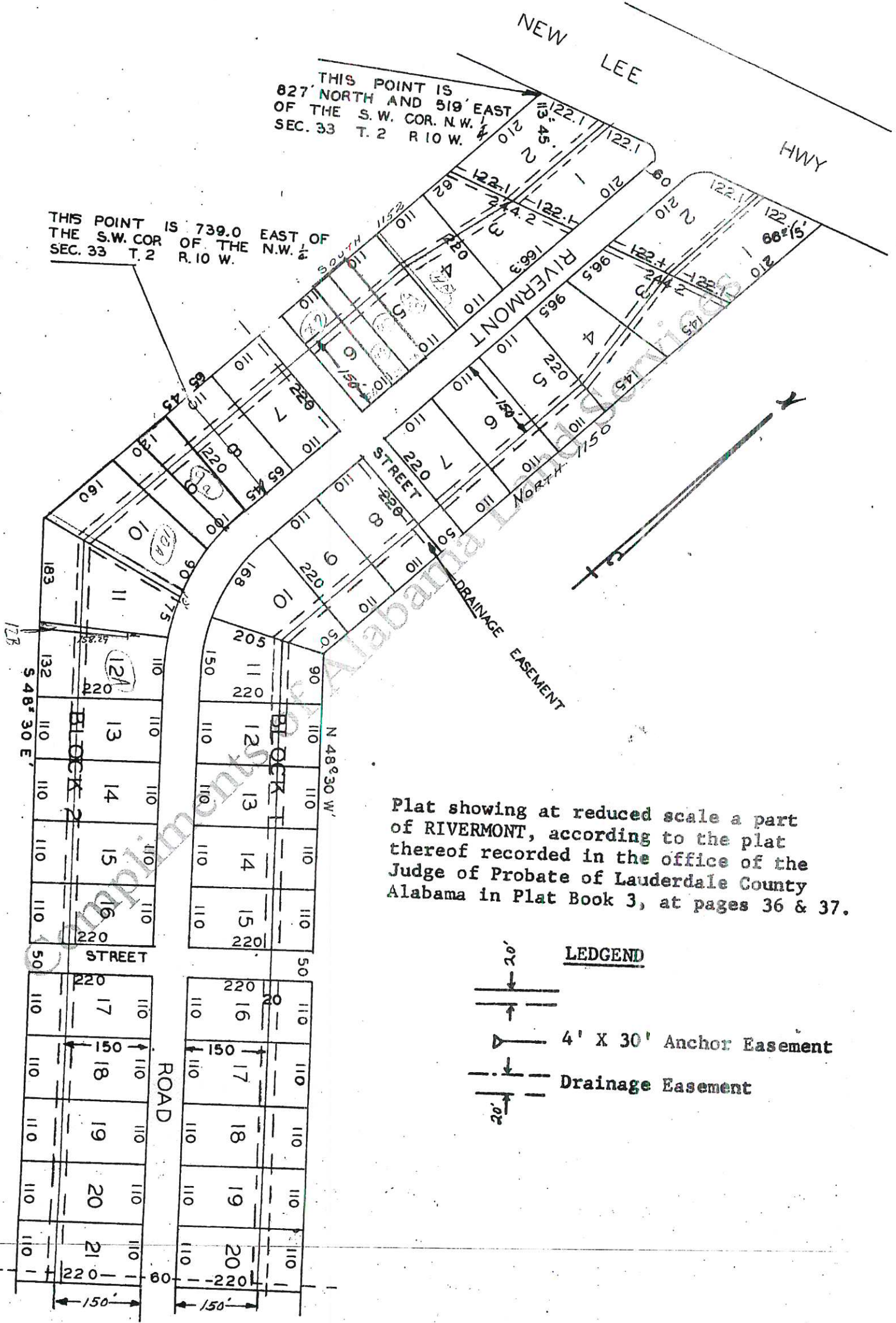




THIS POINT IS 827' NORTH AND 519' EAST OF THE S.W. COR. N.W. 1/4 SEC. 33 T. 2 R. 10 W.

THIS POINT IS 739.0 EAST OF THE S.W. COR. OF THE N.W. 1/4 SEC. 33 T. 2 R. 10 W.



Plat showing at reduced scale a part of RIVERMONT, according to the plat thereof recorded in the office of the Judge of Probate of Lauderdale County Alabama in Plat Book 3, at pages 36 & 37.

LEDGEND

-  4' X 30' Anchor Easement
-  Drainage Easement



PLAT showing, at reduced scale, RIVERMONT SUBDIVISION according to the plat thereof as recorded in the Office of the Judge of Probate of Lauderdale County, Alabama in Plat Book 3, at pages 36, 37.