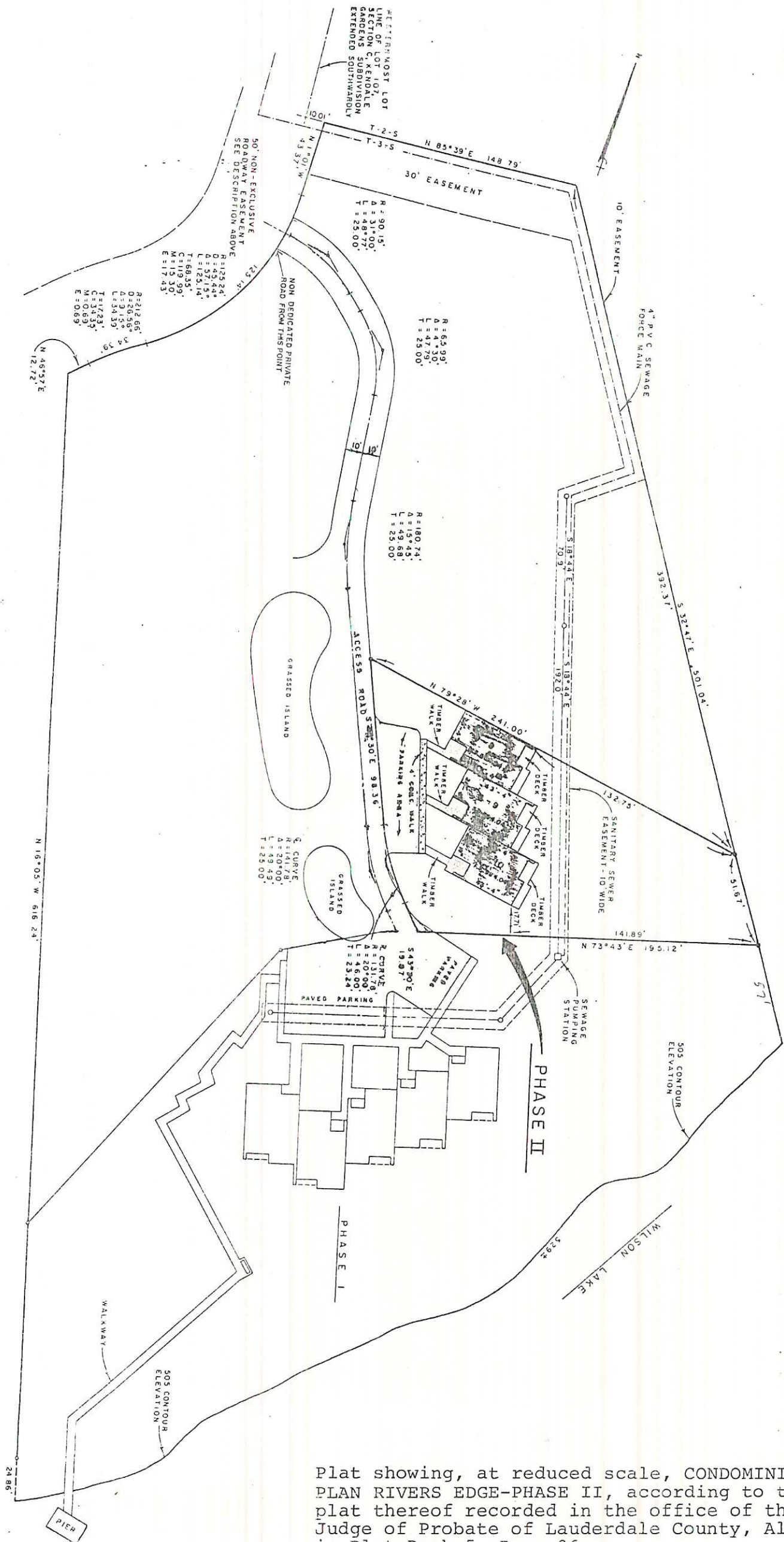


Plat showing, at reduced scale, CONDOMINIUM PLAN RIVERS EDGE, according to the plat thereof recorded in the Office of the Judge of Probate of Lauderdale County, Alabama, in Plat Book 5, Page 93.



Plat showing, at reduced scale, CONDOMINIUM PLAN RIVERS EDGE-PHASE II, according to the plat thereof recorded in the office of the Judge of Probate of Lauderdale County, Alabama,

CONDOMINIUM PLAN PHASE III PB 5, PG 147

SW COR. LOT 107, SECTION C
KENDALE GARDENS SUBDIVISION

N 85° 39' E

10.01'

S 1° 01' E

43.37'

59.14'

A

GRASSED ISLAND

PARKING AREA

4.7' CONC. WALKS

N 47° 10' W
104.39'

FUTURE DEVEL

CURVE A
Δ = 57° 15'
R = 125.24'
T = 68.35'
L = 125.14'

OWN-EXCLUSIVE
ROADWAY EASEMENT
SEE DESCRIPTION
BELOW

6° 57' W
12.72'

34.39'

0.5'

13.5'

14.4'

44.6'

10.4'

9.6'

0.5'

18.4'

0.5'

18.4'

10.4'

9.6'

0.5'

13.5'

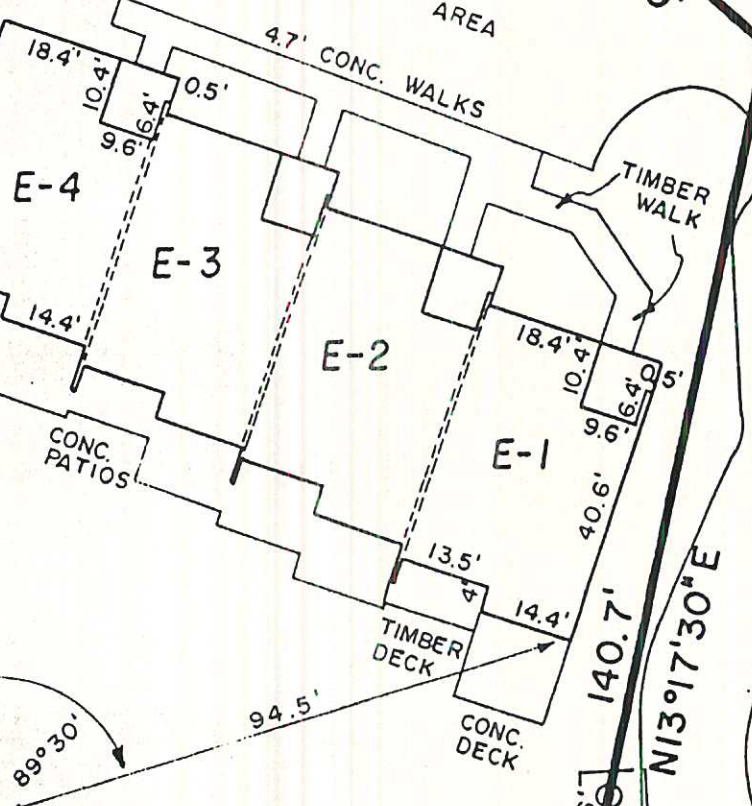
14.4'

94.5'

89° 30'

93.8'

S 78° 03' E

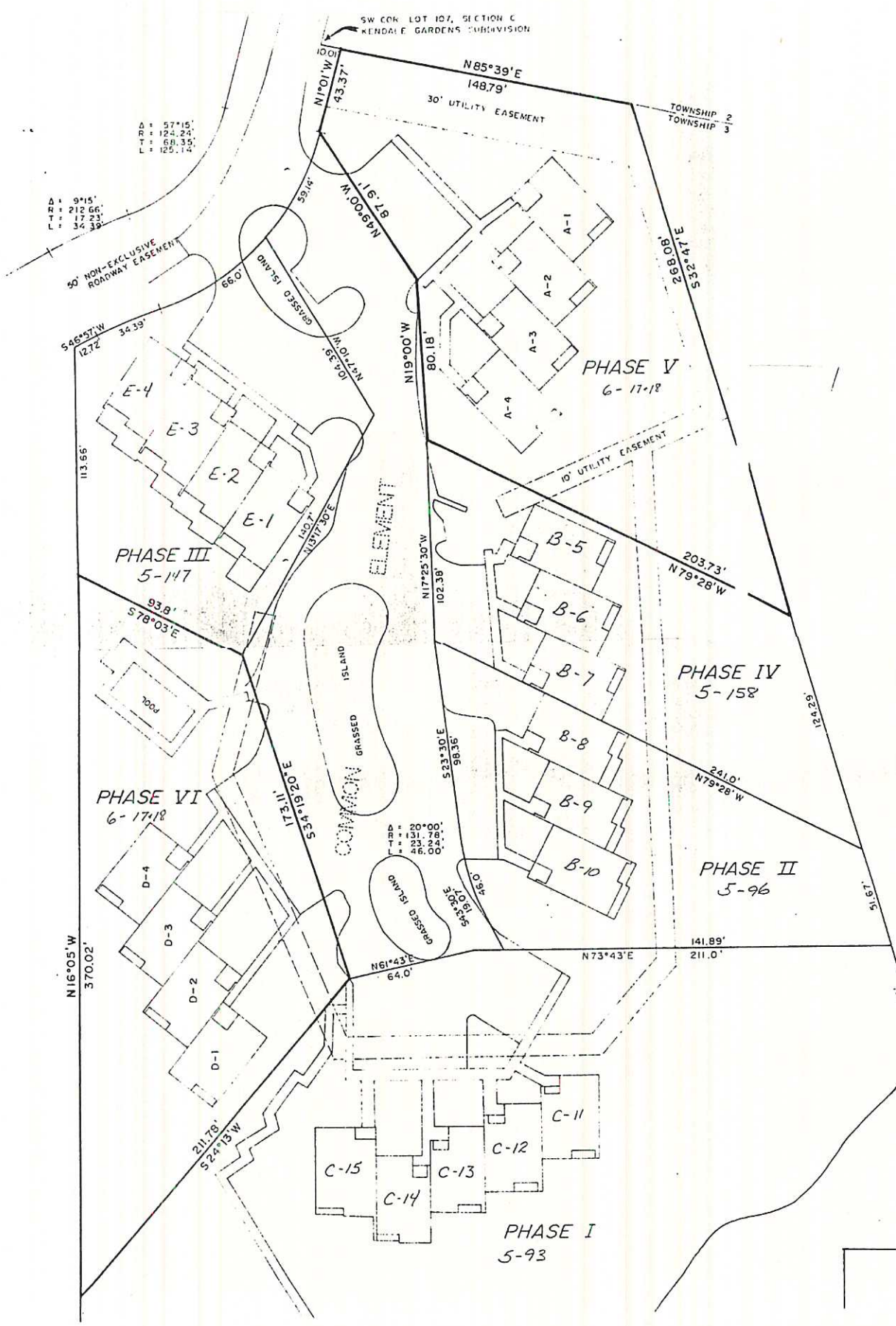


140.7'

N 13° 17' 30" E

26.26'

GRASSED



Δ: 57°15'
R: 124.24'
T: 68.39'
L: 125.14'

Δ: 9°15'
R: 212.66'
T: 17.23'
L: 34.39'

Δ: 20°00'
R: 131.76'
T: 46.60'
L: 134.24'

INGRAM
OWNER

N16°05'W
370.02'

PHASE VI
6-17-18

COMMON ELEMENT

N61°43'E
64.0'

PHASE I
5-93

PHASE IV
5-158

PHASE II
5-96

PHASE V
6-17-18

PHASE III
5-117