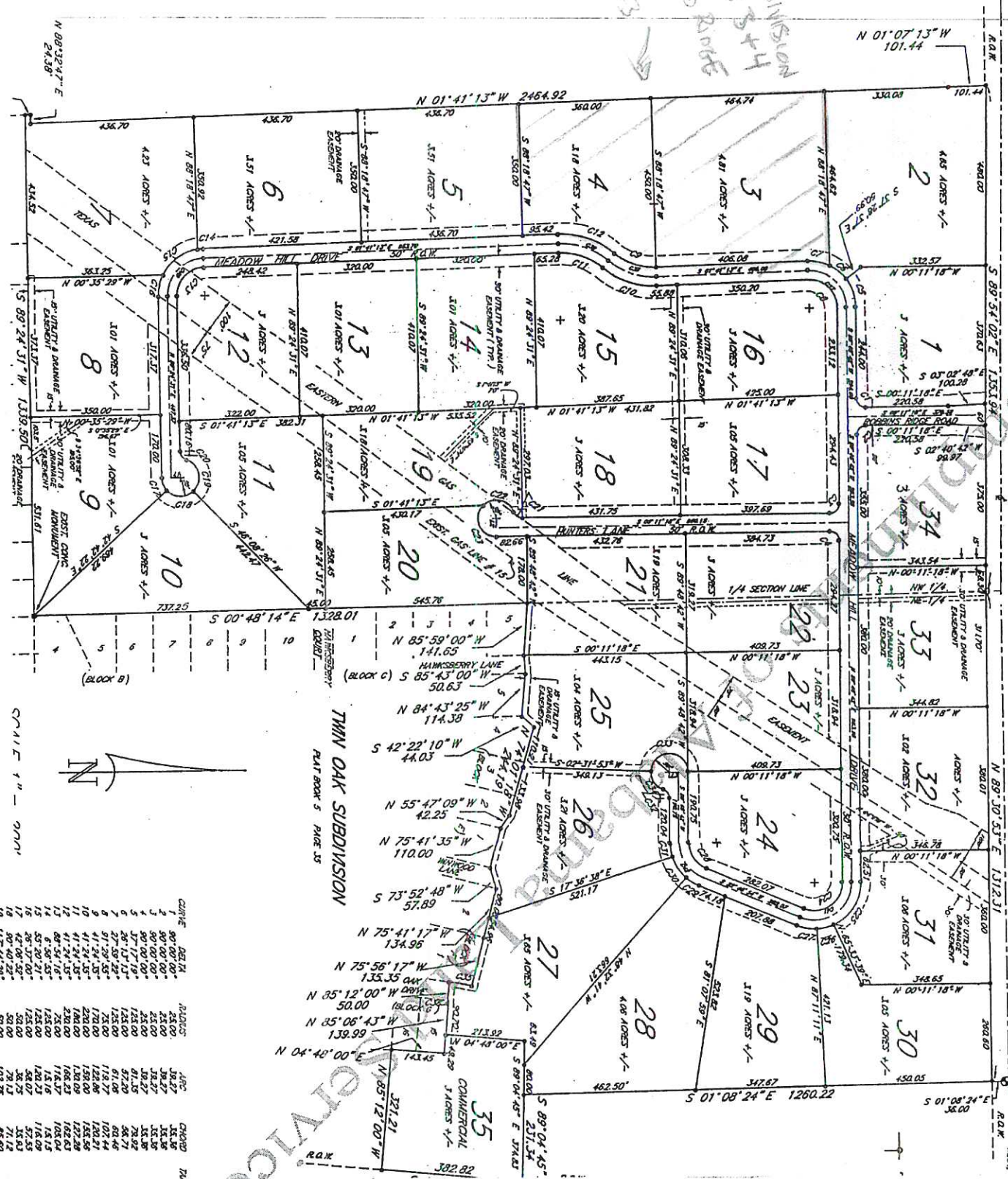


DANLEY ROAD (80' R.O.W.) (CO. RD. # 42)

RESUBDIVISION  
 OF LOTS 3+4  
 OF ROBBINS RIDGE



CURVE	DEG. H.	POINTS	AREA	CHORD	IN.
1	90.00	23.00	18.27	18.27	18.27
2	90.00	23.00	18.27	18.27	18.27
3	90.00	23.00	18.27	18.27	18.27
4	90.00	23.00	18.27	18.27	18.27
5	90.00	23.00	18.27	18.27	18.27
6	90.00	23.00	18.27	18.27	18.27
7	90.00	23.00	18.27	18.27	18.27
8	90.00	23.00	18.27	18.27	18.27
9	90.00	23.00	18.27	18.27	18.27
10	90.00	23.00	18.27	18.27	18.27
11	90.00	23.00	18.27	18.27	18.27
12	90.00	23.00	18.27	18.27	18.27
13	90.00	23.00	18.27	18.27	18.27
14	90.00	23.00	18.27	18.27	18.27
15	90.00	23.00	18.27	18.27	18.27
16	90.00	23.00	18.27	18.27	18.27
17	90.00	23.00	18.27	18.27	18.27
18	90.00	23.00	18.27	18.27	18.27
19	90.00	23.00	18.27	18.27	18.27
20	90.00	23.00	18.27	18.27	18.27
21	90.00	23.00	18.27	18.27	18.27
22	90.00	23.00	18.27	18.27	18.27
23	90.00	23.00	18.27	18.27	18.27
24	90.00	23.00	18.27	18.27	18.27
25	90.00	23.00	18.27	18.27	18.27
26	90.00	23.00	18.27	18.27	18.27
27	90.00	23.00	18.27	18.27	18.27
28	90.00	23.00	18.27	18.27	18.27
29	90.00	23.00	18.27	18.27	18.27
30	90.00	23.00	18.27	18.27	18.27
31	90.00	23.00	18.27	18.27	18.27
32	90.00	23.00	18.27	18.27	18.27
33	90.00	23.00	18.27	18.27	18.27
34	90.00	23.00	18.27	18.27	18.27
35	90.00	23.00	18.27	18.27	18.27

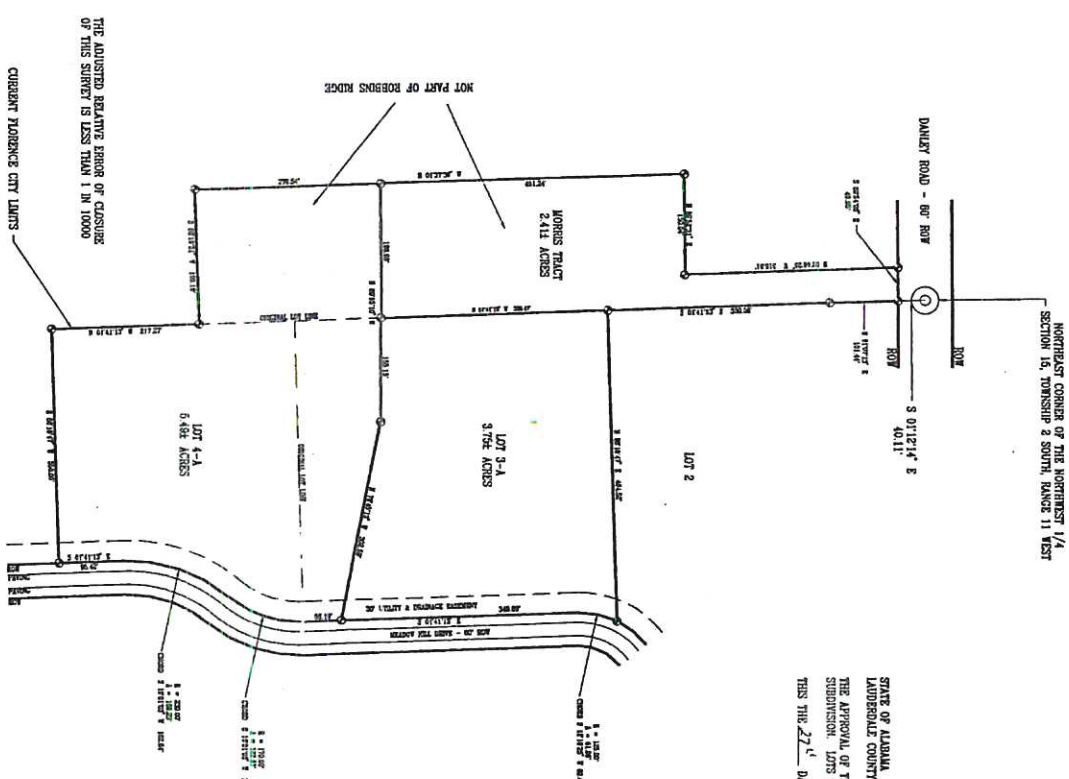
ROBBINS  
 RIDGE  
 6-28

ENGINEERING SERVICES

# RESUBDIVISION OF LOTS 3 AND 4, ROBBINS RIDGE

## PART OF SECTION 15, TOWNSHIP 2 SOUTH, RANGE 11 WEST

123



STATE OF ALABAMA  
LAUDERDALE COUNTY

THE APPROVAL OF THE LAUDERDALE COUNTY HEALTH DEPARTMENT IS NOT REQUIRED FOR THIS SUBDIVISION. LOTS MUST BE SUBMITTED ON AN INDIVIDUAL BASIS FOR ON-SITE SEWAGE SYSTEMS.

THIS THE 27<sup>th</sup> DAY OF December, 2008

*Heather W. Wicks*  
HEALTH DEPARTMENT



STATE OF ALABAMA  
LAUDERDALE COUNTY

APPROVED FOR RECORDING BY THE CITY ENGINEER, CITY OF FLORENCE, ALABAMA, THIS THE 27<sup>th</sup> DAY OF December, 2008

*Michael B. Watson III*  
CITY ENGINEER  
CITY OF FLORENCE, ALABAMA

STATE OF ALABAMA  
LAUDERDALE COUNTY

I, DEREK D. MITCHELL, CLERK OF LAUDERDALE COUNTY, ALABAMA, HEREBY CERTIFY THAT THE ATTACHED PLAT OF RESUBDIVISION OF LOTS 3 AND 4, ROBBINS RIDGE WAS FILED IN THE OFFICE OF THE CLERK OF LAUDERDALE COUNTY, ALABAMA, ON PLAT BOOK 7, PAGE 143, THIS THE 11<sup>th</sup> DAY OF January, 2009

*Derek D. Mitchell*  
CLERK OF LAUDERDALE COUNTY, ALABAMA

STATE OF ALABAMA  
LAUDERDALE COUNTY

APPROVED FOR RECORDING BY THE COUNTY ENGINEER OF LAUDERDALE COUNTY, ALABAMA, THIS THE 29<sup>th</sup> DAY OF January, 2009

*Scott A. Williams*  
COUNTY ENGINEER  
LAUDERDALE COUNTY, ALABAMA

STATE OF ALABAMA  
LAUDERDALE COUNTY

APPROVED FOR RECORDING BY THE CHAIRMAN OF THE PLANNING COMMISSION OF THE CITY OF FLORENCE, THIS THE 29<sup>th</sup> DAY OF December, 2008

*Robert W. Williams*  
CHAIRMAN  
PLANNING COMMISSION

STATE OF ALABAMA  
LAUDERDALE COUNTY

I, RONNIE E. WINGTON, A REGISTERED LAND SURVEYOR IN SAID STATE AND COUNTY, HEREBY CERTIFY THAT I HAVE SURVEYED THAT CERTAIN TRACT OF LAND DESCRIBED AS RESUBDIVISION OF LOTS 3 AND 4, ROBBINS RIDGE, ON THE ANNEKED PLAT SITUATED IN SECTION 16, TOWNSHIP 2 SOUTH, RANGE 11 WEST, LAUDERDALE COUNTY, ALABAMA, THAT I HAVE SUBDIVIDED SAID TRACT SHOWING THE EXISTING TRAIL, OTHER THE BEARINGS AND DISTANCES OF EACH LINE, AS WELL AS THE SIZE OF THE TRACTS, I FORMERLY SURVEYED AND SHOWN ON SAID ANNEKED PLAT, AND THAT SAID SUBDIVISION AND SHOWS THE PROPER RELATIONSHIP TO THE U. S. GOVERNMENT SURVEY OF PUBLIC LANDS IN THE STATE OF ALABAMA.

I HEREBY CERTIFY THAT ALL PARTS OF THE ATTACHED SURVEY AND PLAT HAVE BEEN COMPLETED IN ACCORDANCE WITH THE REQUIREMENTS OF THE MINIMUM TECHNICAL STANDARDS FOR THE PRACTICE OF LAND SURVEYING IN THE STATE OF ALABAMA.

GIVEN UNDER MY HAND AND SEAL, THIS THE 12<sup>TH</sup> DAY OF SEPTEMBER, 2008.

*Ronnie E. Wington*  
RONNIE E. WINGTON  
REGISTERED LAND SURVEYOR  
ALA. REG. NO. 19318

STATE OF ALABAMA  
LAUDERDALE COUNTY

WE, PAUL MORRIS AND USA MORRIS, OWNERS OF THE PROPERTY PLATTED ON THE ANNEKED PLAT AND DESIGNATED AS RESUBDIVISION OF LOTS 3 AND 4, ROBBINS RIDGE, ACCEPT AND EXPRESSLY ADOPT SAID PLAT AS THE OFFICIAL RECORD OF SAID, AND IN CONSIDERATION OF THE RESPECTIVE BENEFITS TO ACCRUE TO US, OUR SUCCESSORS AND ASSIGNS, DO HEREBY GRANT AND CONVEY TO THE CITY OF FLORENCE, ALABAMA, THE RIGHT OF EASE, RIGHT OF WAY, RIGHT OF ACCESS AND RIGHT OF PASSAGE FOR THE MAINTENANCE OF SUCH UTILITIES OVER THE RESPECTIVE EXPANSIONS, INCLUDING THE RIGHT TO CUT AND CLEAR TREES OR PARTS THEREOF OR OTHER OBSTACLES THAT MAY INHIBIT OR ENDANGER UTILITY LINES.

GIVEN UNDER OUR HANDS, THIS THE 11<sup>th</sup> DAY OF December, 2008.

*Paul Morris*  
PAUL MORRIS

*USA Morris*  
USA MORRIS

STATE OF ALABAMA  
LAUDERDALE COUNTY

I, THE UNDERSIGNED, A NOTARY PUBLIC IN SAID STATE, HEREBY CERTIFY THAT PAUL MORRIS AND USA MORRIS, WHOSE NAMES ARE SIGNED TO THE FOREGOING PLAT AS OWNERS OF THE PROPERTY AND WHO ARE KNOWN TO ME, ACKNOWLEDGED ON THIS DATE THAT BEING INWEAVER GIVEN UNDER MY HAND AND SEAL, THIS THE 11<sup>th</sup> DAY OF December, 2008.

*Christie S. Williams*  
NOTARY PUBLIC  
MY COMMISSION EXPIRES 04-15-10

STATE OF ALABAMA  
LAUDERDALE COUNTY

WE, SHERRETT WORTWAGE, AS HOLDER OF MORTGAGE, JOINS IN AND CONSENTS TO THE SUBDIVISION AND EXPANSIONS AS SHOWN ON AND DESCRIBED AS RESUBDIVISION OF LOTS 3 AND 4, ROBBINS RIDGE, ACCEPT THE PLAT AS OFFICIAL RECORD OF SAID.

*Sherrett Wortwage*  
SHERRETT WORTWAGE  
BY: *Jackie L. Miller*  
MAY 14, 2004

STATE OF ALABAMA  
LAUDERDALE COUNTY

I, THE UNDERSIGNED, A NOTARY PUBLIC IN AND FOR SAID STATE AND COUNTY, HEREBY CERTIFY THAT THE NAMED SIGNED TO THE FOREGOING PLAT, HAVE PERSONALLY APPEARED AND BEEN IDENTIFIED TO ME AND HAVE ACKNOWLEDGED ON THIS DATE THAT BEING INWEAVER GIVEN UNDER MY HAND AND SEAL, THIS THE 19<sup>th</sup> DAY OF December, 2008.

*Deborah L. Baker*  
NOTARY PUBLIC  
My Commission Expires 7-31-08



THIS SURVEY IS INTENDED FOR THE SAID PURPOSE AND USE BY THE PERSON NAMED HEREON AND IS NOT INTENDED FOR ANY OTHER PURPOSE.

LEGEND	
---	1/2" = 1'00'
---	1/4" = 1'00'
---	1/8" = 1'00'
---	1/16" = 1'00'
---	1/32" = 1'00'
---	1/64" = 1'00'
---	1/128" = 1'00'
---	1/256" = 1'00'
---	1/512" = 1'00'
---	1/1024" = 1'00'
---	1/2048" = 1'00'
---	1/4096" = 1'00'
---	1/8192" = 1'00'
---	1/16384" = 1'00'
---	1/32768" = 1'00'
---	1/65536" = 1'00'
---	1/131072" = 1'00'
---	1/262144" = 1'00'
---	1/524288" = 1'00'
---	1/1048576" = 1'00'
---	1/2097152" = 1'00'
---	1/4194304" = 1'00'
---	1/8388608" = 1'00'
---	1/16777216" = 1'00'
---	1/33554432" = 1'00'
---	1/67108864" = 1'00'
---	1/134217728" = 1'00'
---	1/268435456" = 1'00'
---	1/536870912" = 1'00'
---	1/1073741824" = 1'00'
---	1/2147483648" = 1'00'
---	1/4294967296" = 1'00'
---	1/8589934592" = 1'00'
---	1/17179869184" = 1'00'
---	1/34359738368" = 1'00'
---	1/68719476736" = 1'00'
---	1/137438953472" = 1'00'
---	1/274877906944" = 1'00'
---	1/549755813888" = 1'00'
---	1/1099511627776" = 1'00'
---	1/2199023255552" = 1'00'
---	1/4398046511104" = 1'00'
---	1/8796093022208" = 1'00'
---	1/17592186044416" = 1'00'
---	1/35184372088832" = 1'00'
---	1/70368744177664" = 1'00'
---	1/140737488355328" = 1'00'
---	1/281474976710656" = 1'00'
---	1/562949953421312" = 1'00'
---	1/1125899906842624" = 1'00'
---	1/2251799813685248" = 1'00'
---	1/4503599627370496" = 1'00'
---	1/9007199254740992" = 1'00'
---	1/18014398509481984" = 1'00'
---	1/36028797018963968" = 1'00'
---	1/72057594037927936" = 1'00'
---	1/144115188075855872" = 1'00'
---	1/288230376151711744" = 1'00'
---	1/576460752303423488" = 1'00'
---	1/1152921504606846976" = 1'00'
---	1/2305843009213693952" = 1'00'
---	1/4611686018427387904" = 1'00'
---	1/9223372036854775808" = 1'00'
---	1/18446744073709551616" = 1'00'
---	1/36893488147419103232" = 1'00'
---	1/73786976294838206464" = 1'00'
---	1/147573952589676412928" = 1'00'
---	1/295147905179352825856" = 1'00'
---	1/590295810358705651712" = 1'00'
---	1/1180591620717411303424" = 1'00'
---	1/2361183241434822606848" = 1'00'
---	1/4722366482869645213696" = 1'00'
---	1/9444732965739290427392" = 1'00'
---	1/18889465931478580854784" = 1'00'
---	1/37778931862957161709568" = 1'00'
---	1/75557863725914323419136" = 1'00'
---	1/151115727451828646838272" = 1'00'
---	1/302231454903657293676544" = 1'00'
---	1/604462909807314587353088" = 1'00'
---	1/1208925819614629174706176" = 1'00'
---	1/2417851639229258349412352" = 1'00'
---	1/4835703278458516698824704" = 1'00'
---	1/9671406556917033397649408" = 1'00'
---	1/19342813113834066795298816" = 1'00'
---	1/38685626227668133590597632" = 1'00'
---	1/77371252455336267181195264" = 1'00'
---	1/154742504910672534362390528" = 1'00'
---	1/309485009821345068724781056" = 1'00'
---	1/618970019642690137449562112" = 1'00'
---	1/1237940039285380274899124224" = 1'00'
---	1/2475880078570760549798248448" = 1'00'
---	1/4951760157141521099596488896" = 1'00'
---	1/9903520314283042199193977793" = 1'00'
---	1/19807040628566084398387955984" = 1'00'
---	1/39614081257132168796775911968" = 1'00'
---	1/79228162514264337593551823936" = 1'00'
---	1/158456325028528675187103647872" = 1'00'
---	1/316912650057057350374207295744" = 1'00'
---	1/633825300114114700748414591488" = 1'00'
---	1/1267650600228229401496829182976" = 1'00'
---	1/2535301200456458802993658365952" = 1'00'
---	1/5070602400912917605987316731904" = 1'00'
---	1/10141204801825835211974633463808" = 1'00'
---	1/20282409603651670423949266927616" = 1'00'
---	1/40564819207303340847898533855232" = 1'00'
---	1/81129638414606681695797067710464" = 1'00'
---	1/162259276829213373391594135420928" = 1'00'
---	1/324518553658426746783188270841856" = 1'00'
---	1/649037107316853493566376541683712" = 1'00'
---	1/1298074214633706987132753083367424" = 1'00'
---	1/2596148429267413974265506166734848" = 1'00'
---	1/519229685853482794853101233346976" = 1'00'
---	1/1038459371706965589706202466691904" = 1'00'
---	1/2076918743413931179412404933383808" = 1'00'
---	1/4153837486827862358824809866767616" = 1'00'
---	1/8307674973655724717649619733535232" = 1'00'
---	1/16615349947311449435299238671070464" = 1'00'
---	1/33230699894622898870598477342141296" = 1'00'
---	1/66461399789245797741196954684282592" = 1'00'
---	1/13292279957849159548239390928565184" = 1'00'
---	1/26584559915698319096478781857130368" = 1'00'
---	1/53169119831396638192957563714260736" = 1'00'
---	1/106338239662793276385915127428521504" = 1'00'
---	1/212676479325586552771830254857043008" = 1'00'
---	1/425352958651173105543660509714086016" = 1'00'
---	1/850705917302346211087321019428172032" = 1'00'
---	1/1701411834604692422174642038856344064" = 1'00'
---	1/3402823669209384844349284077712688128" = 1'00'
---	1/6805647338418769688698568155425376256" = 1'00'
---	1/13611294676837539377397137310850752512" = 1'00'
---	1/27222589353675078754794274621701505024" = 1'00'
---	1/54445178707350157509588549243403010048" = 1'00'
---	1/108890357414700315019177098486806020096" = 1'00'
---	1/217780714829400630038354196973612040192" = 1'00'
---	1/435561429658801260076708393947224080384" = 1'00'
---	1/871122859317602520153416787894448160768" = 1'00'
---	1/174224571823520504030683357578896321536" = 1'00'
---	1/348449143647041008061366715157792643072" = 1'00'
---	1/696898287294082016122733430315585286144" = 1'00'
---	1/1393796574588164032245466860631705572288" = 1'00'
---	1/2787593149176328064490933201263411144576" = 1'00'
---	1/5575186298352656128981866402526822289152" = 1'00'
---	1/1115037259670531225796373280505364457824" = 1'00'
---	1/22300745193410624515927465610107289155648" = 1'00'
---	1/44601490386821249031854931220214578311136" = 1'00'
---	1/8920298077364249806370986244042915662272" = 1'00'
---	1/17840596154728499612741972488085831324544" = 1'00'
---	1/35681192309456999225483944976171662649088" = 1'00'
---	1/7136238461891399845096788995234332519216" = 1'00'
---	1/14272476923782799690193577990468665038432" = 1'00'
---	1/28544953847565599380387155980937330076864" = 1'00'
---	1/570899076951311987607743119618746601532928" = 1'00'
---	1/11417981539026239742154823922369320306576" = 1'00'
---	1/22835963078052479484309647844738640613152" = 1'00'
---	1/45671926156104958968619295689477281226304" = 1'00'
---	1/91343852312209917937238591378954562452608" = 1'00'
---	1/18268770462441983775447718275790914905312" = 1'00'
---	1/36537540924883967550895436551581829810624" = 1'00'
---	1/73075081849767935101790873103163559621248" = 1'00'
---	1/14615016369953587020358174220632711924256" = 1'00'
---	1/29230032739907174040716348441265423848512" = 1'00'
---	1/58460065479814348081432896882530847697024" = 1'00'
---	1/116920130959628696162865793765061693914048" = 1'00'
---	1/233840261919257392325731587530123378228096" = 1'00'
---	1/467680523838514784651463175060246756456192" = 1'00'
---	1/935361047677029569302926350120493512912384" = 1'00'
---	1/1870722095354059138605852700240987025824768" = 1'00'
---	1/3741444190708118277211705400481974051649536" = 1'00'
---	1/7482888381416236554423410800963948103299104" = 1'00'
---	1/1496577676283247310884682160192789620659808" = 1'00'
---	1/2993155352566494621769364320385579241319712" = 1'00'
---	1/5986310705132989243538728640771158482638432" = 1'00'
---	1/11972621410265978487077457281542316952776864" = 1'00'
---	1/23945242820531956974154914563084633905553728" = 1'00'
---	1/47890485641063913948309829126169267811107456" = 1'00'
---	1/95780971282127827896619658252338535622214912" = 1