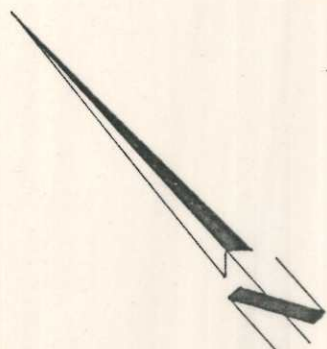
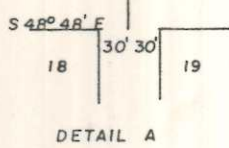
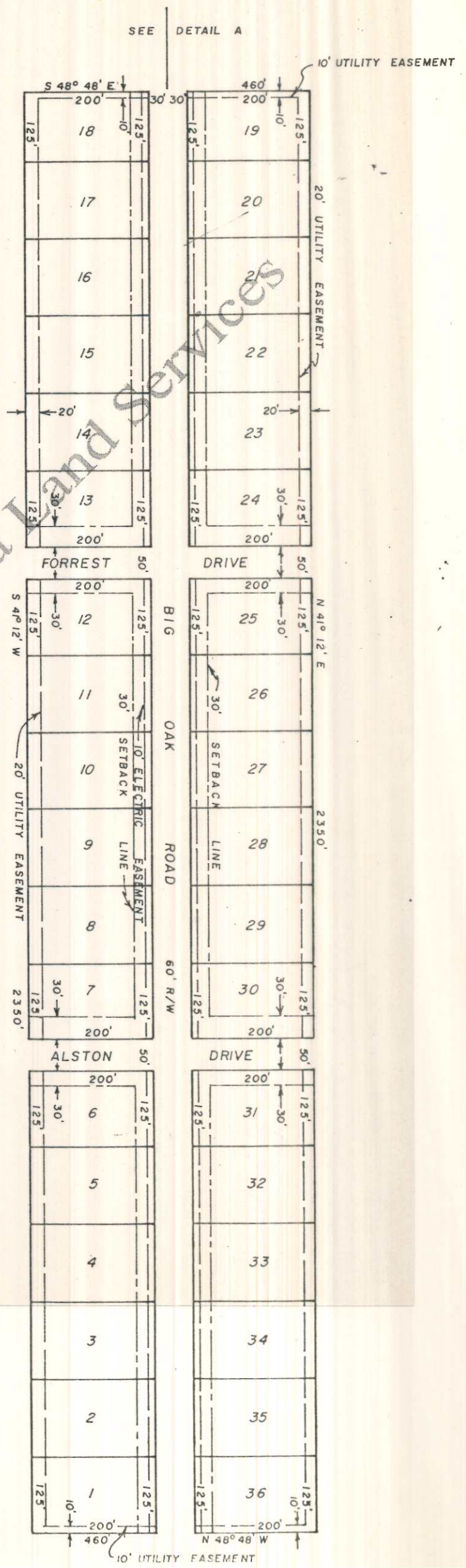


NW COR. SW 1/4  
SEC. 26, TP 2 S, R 9 W  
LAUDERDALE CO, ALA.



SCALE: 1" = 200'  
ROLLING MEADOW  
Subdivision  
LAUDERDALE CO, ALA.



Plat showing, at reduced scale,  
ROLLING MEADOW, in Lauderdale County,  
Alabama, according to the plat thereof  
recorded in the Office of the Judge of  
Probate of said County in Plat Book 4,  
at Page 144.

Compliments of Alabama Land Services