

NORTHWEST CORNER OF SECTION 26, TOWNSHIP 2 SOUTH, RANGE 11 WEST.

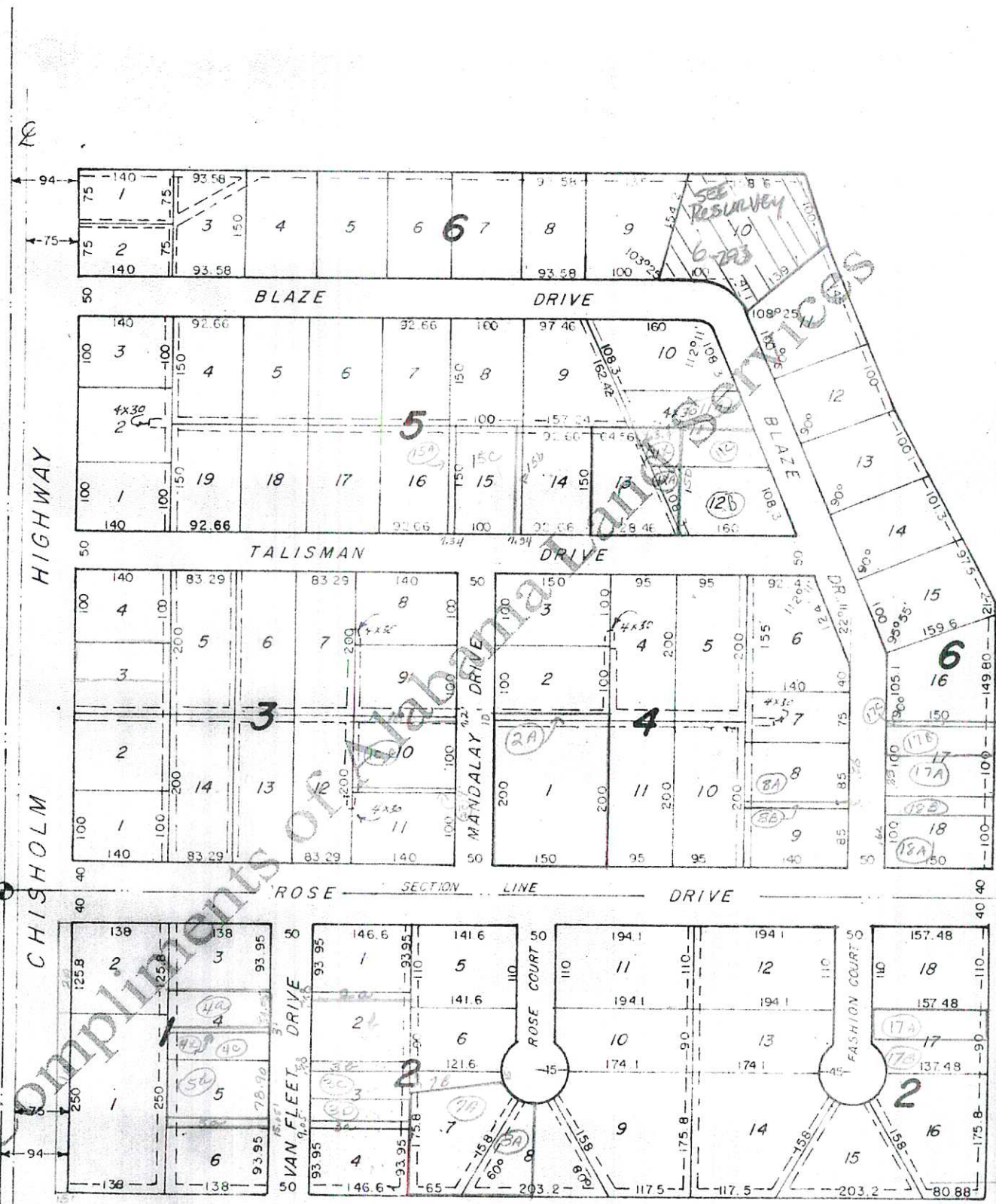


NOTE:

All easements 16' unless noted otherwise.

Plat showing, at reduced scale, ROSE PARK, according to the plat thereof recorded in the Probate Office of Lauderdale County, Alabama, in Plat Book 3, at page 7.

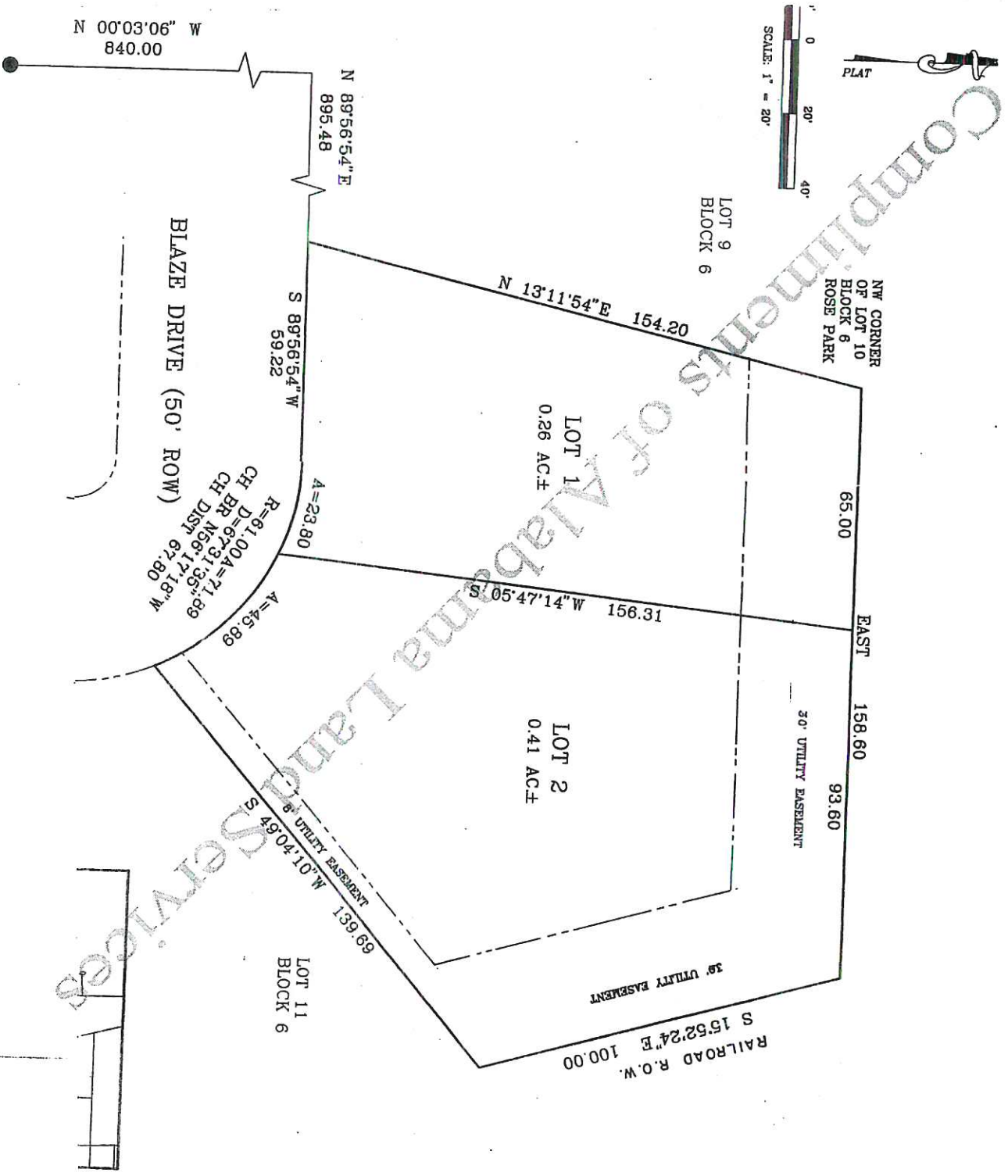
NORTHWEST CORNER OF SECTION 26, TOWNSHIP 2 SOUTH, RANGE 11 WEST.



NOTE:  
All easements 16' unless noted otherwise.

Plat showing, at reduced scale, ROSE PARK, according to the plat thereof recorded in the Probate Office of Lauderdale County, Alabama, in Plat Book 3, at page 7.

RESURVEY of  
 Lot 10, Block 6  
 Rose Park  
 6-293



SW CORNER OF SECTION 23, T-2-S, R-11-W, LAUDERDALE COUNTY, ALABAMA

1/2" REBAR SET ALL CORNERS

Compliments of Alabama Land Services