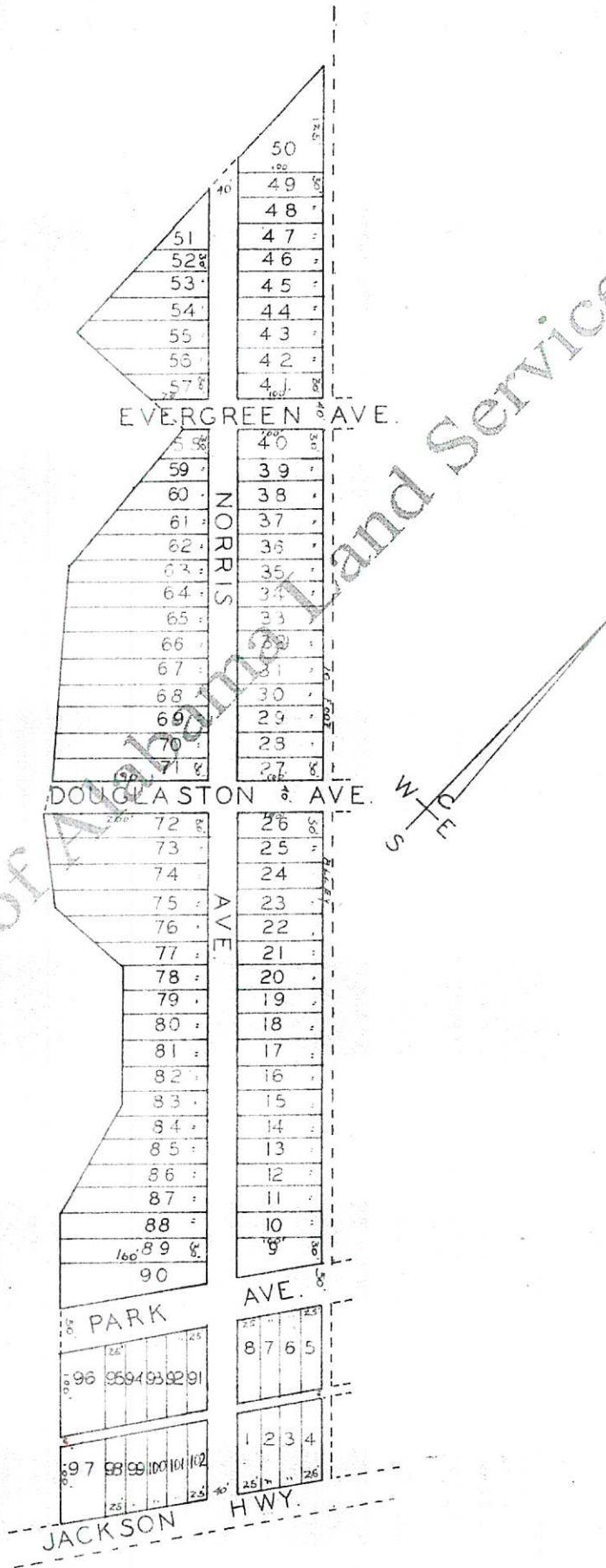
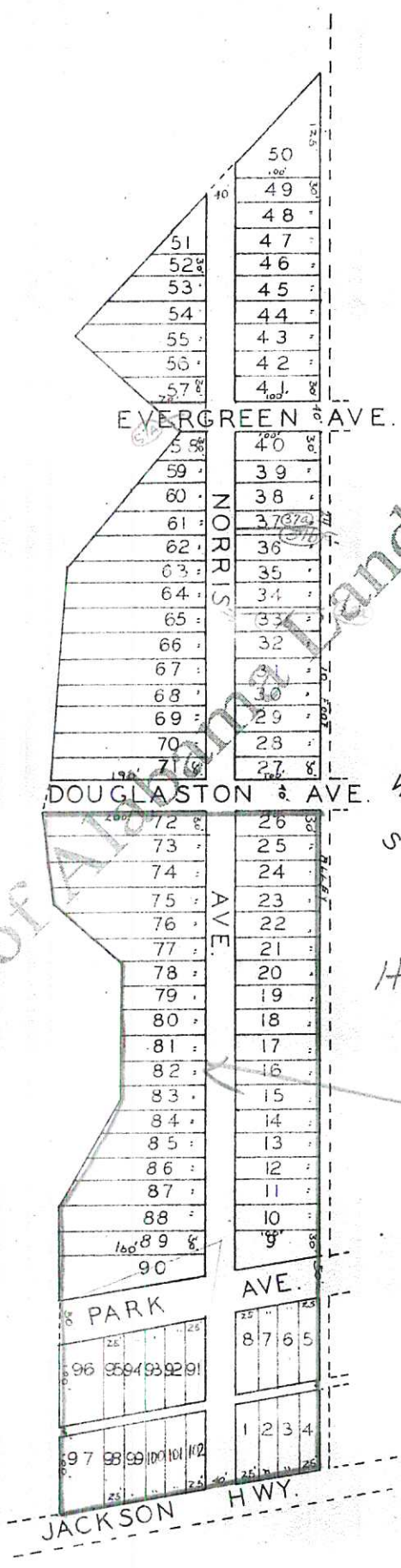


Compliments of Alabama Land Services



Plt showing at reduced scale, Rose Veldt, according to the plat thereof recorded in the office of the Judge of Probate of Lauderdale County, Alabama, in Plat Book 2 at page 37.

Compliments of Alabama Land Services

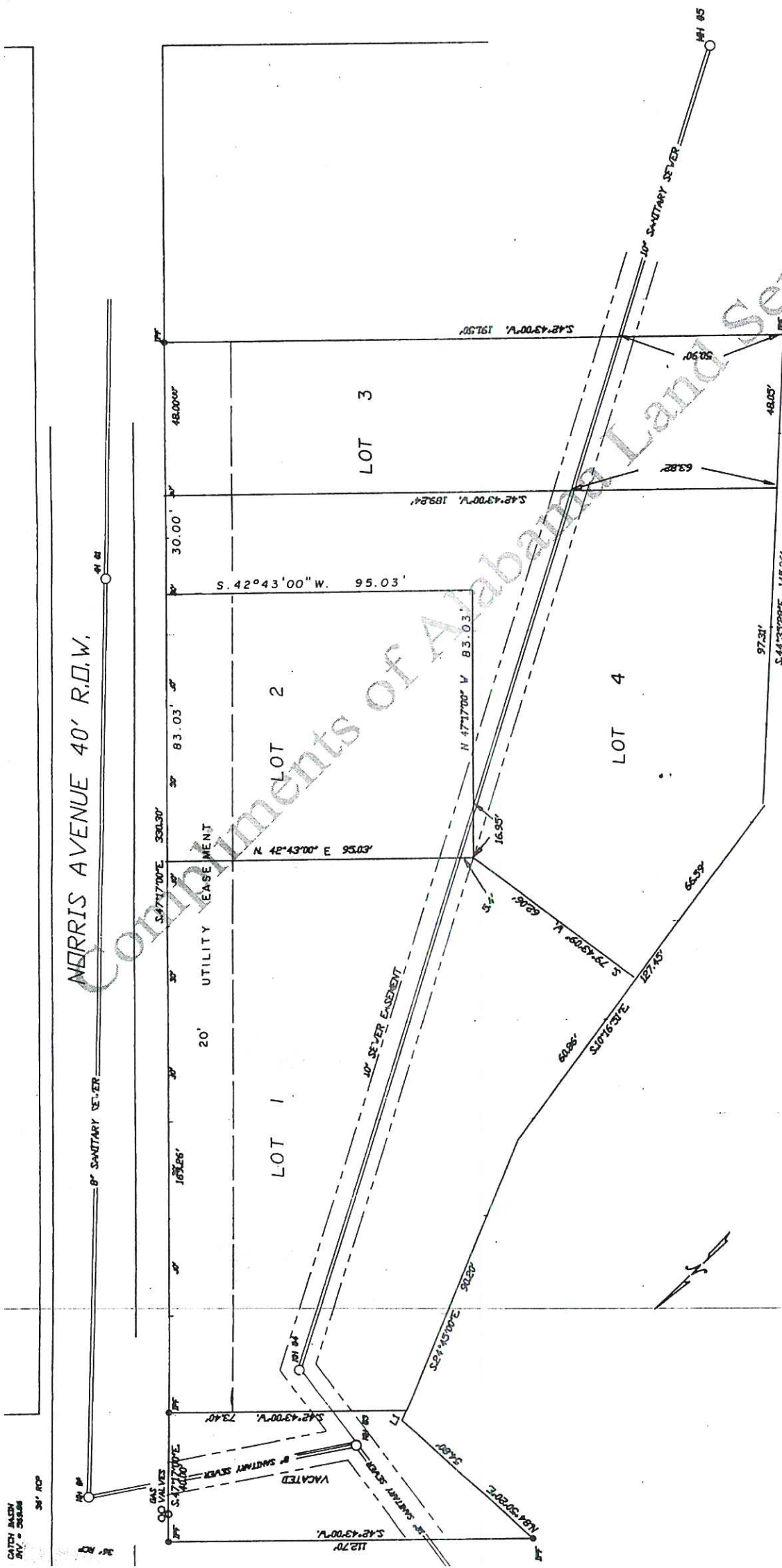


HERMITAGE COMMODUS  
P.B. 6 P. 30

Plt showing at reduced scale, Rose Veldt, according to the plat thereof recorded in the office of the Judge of Probate of Lauderdale County, Alabama, in Plat Book 2 at page 37.

DOUGALSTON AVENUE

MORRIS AVENUE 40' R.D.W.



CATCH BASIN  
DIV. = 208.00  
34' ROP

LINE TABLE

Bearing	Distance
N 42°43'00" V.	3.51'

SANITARY SEWER MANHOLE INFORMATION

MANHOLE #	TOP ELEV.	INV. ELEV.	IN/OUT
1	582.1	575.8	
2	573.16	567.19	
3	569.2	562.8	562.2
4	569.3	562.6	
5	572.2	565.3	

THE CEDARS

RESURVEY OF LOTS 58-68  
OF ROSE VILLET SUBDIVISION

6-120

Copyrights of Alabama Land Services