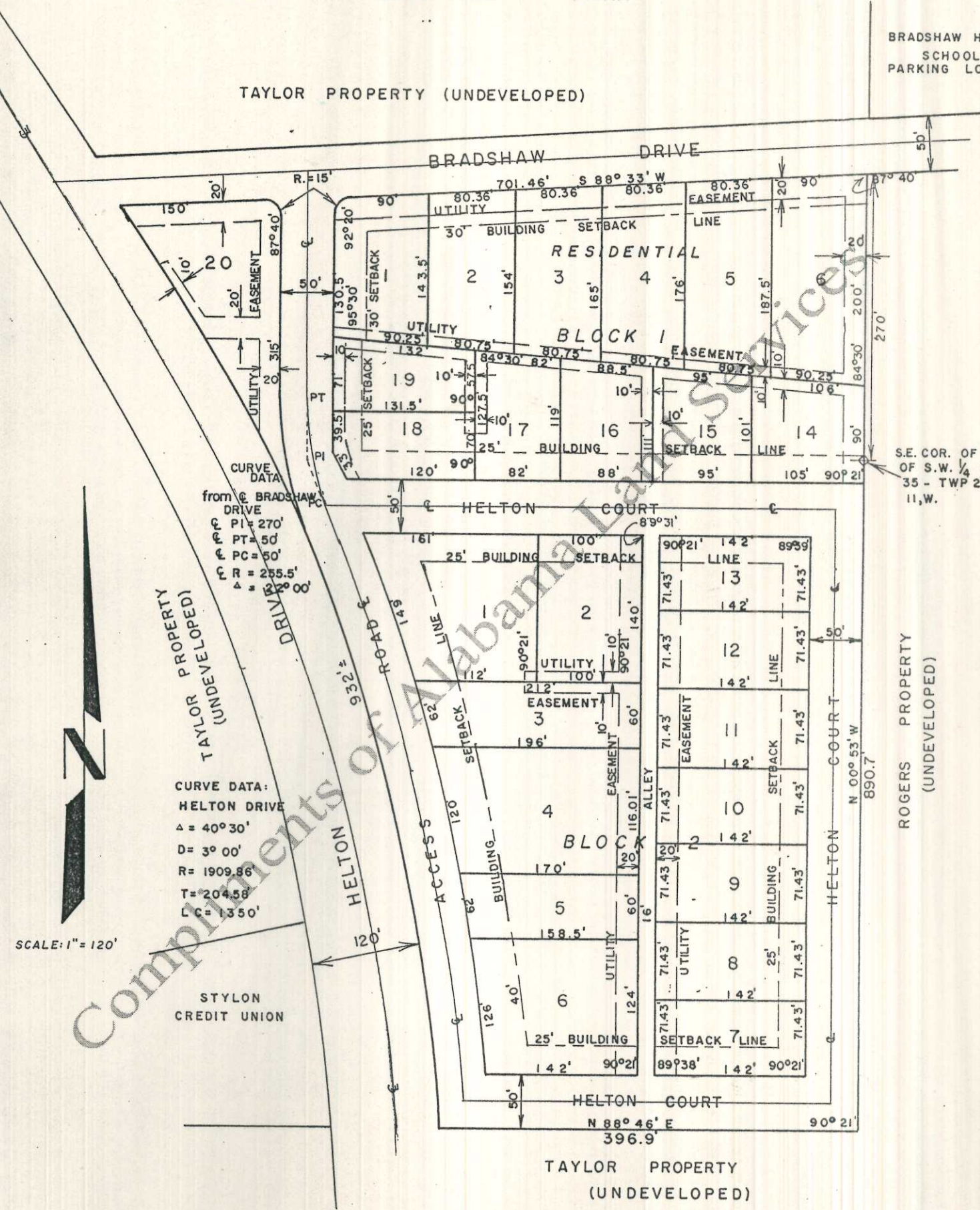


SANDLIN INDUSTRIAL PARK

BRADSHAW HIGH SCHOOL PARKING LOT

TAYLOR PROPERTY (UNDEVELOPED)



CURVE DATA
from E BRADSHAW DRIVE
PI = 270'
PT = 50'
PC = 50'
R = 255.5'
Δ = 20° 00'

CURVE DATA:
HELTON DRIVE
Δ = 40° 30'
D = 3° 00'
R = 1909.86
T = 204.58
L C = 1350'

S.E. COR. OF N.E. 1/4 OF S.W. 1/4 OF SEC. 35 - TWP 2, S. - R. 11, W.

SCALE: 1" = 120'

STYLON CREDIT UNION

TAYLOR PROPERTY (UNDEVELOPED)

Plat showing at reduced scale, SANDLIN INDUSTRIAL PARK, according to the plat thereof recorded in the Office of the Judge of Probate of Lauderdale County, Alabama, in Plat Book 4, Page 149.