

WHITES LAKE  
LITTLE CYPRESS CREEK

N. E. of N.W.

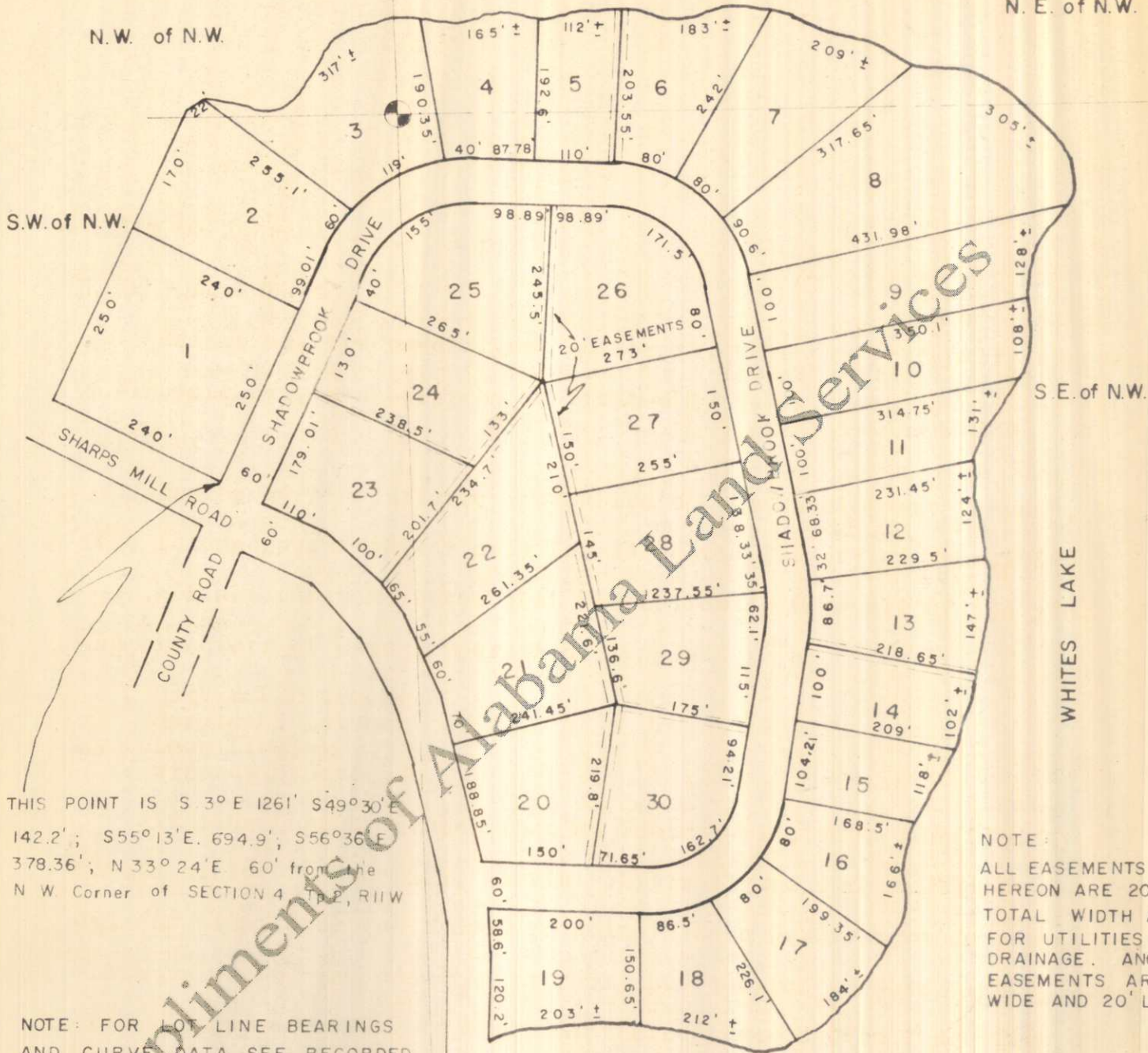
N. W. of N.W.

S.W. of N.W.

S. E. of N.W.

WHITES LAKE

WHITES LAKE  
LITTLE CYPRESS CREEK



THIS POINT IS S 3° E 1261' S 49° 30' E  
142.2'; S 55° 13' E. 694.9'; S 56° 36' E  
378.36'; N 33° 24' E. 60' from the  
N. W. Corner of SECTION 4, T 2, R 11 W

NOTE:  
ALL EASEMENTS SHOWN  
HEREON ARE 20' IN  
TOTAL WIDTH AND ARE  
FOR UTILITIES AND/OR  
DRAINAGE. ANCHOR  
EASEMENTS ARE 5'  
WIDE AND 20' LONG.

NOTE: FOR LOT LINE BEARINGS  
AND CURVE DATA SEE RECORDED  
PLAT.

Plat showing, at reduced scale, SHADOWBROOK SHORES SUBDIVISION,  
according to the plat thereof as recorded in the Office of the Judge of  
Probate of Lauderdale County, Alabama in Plat Book at page