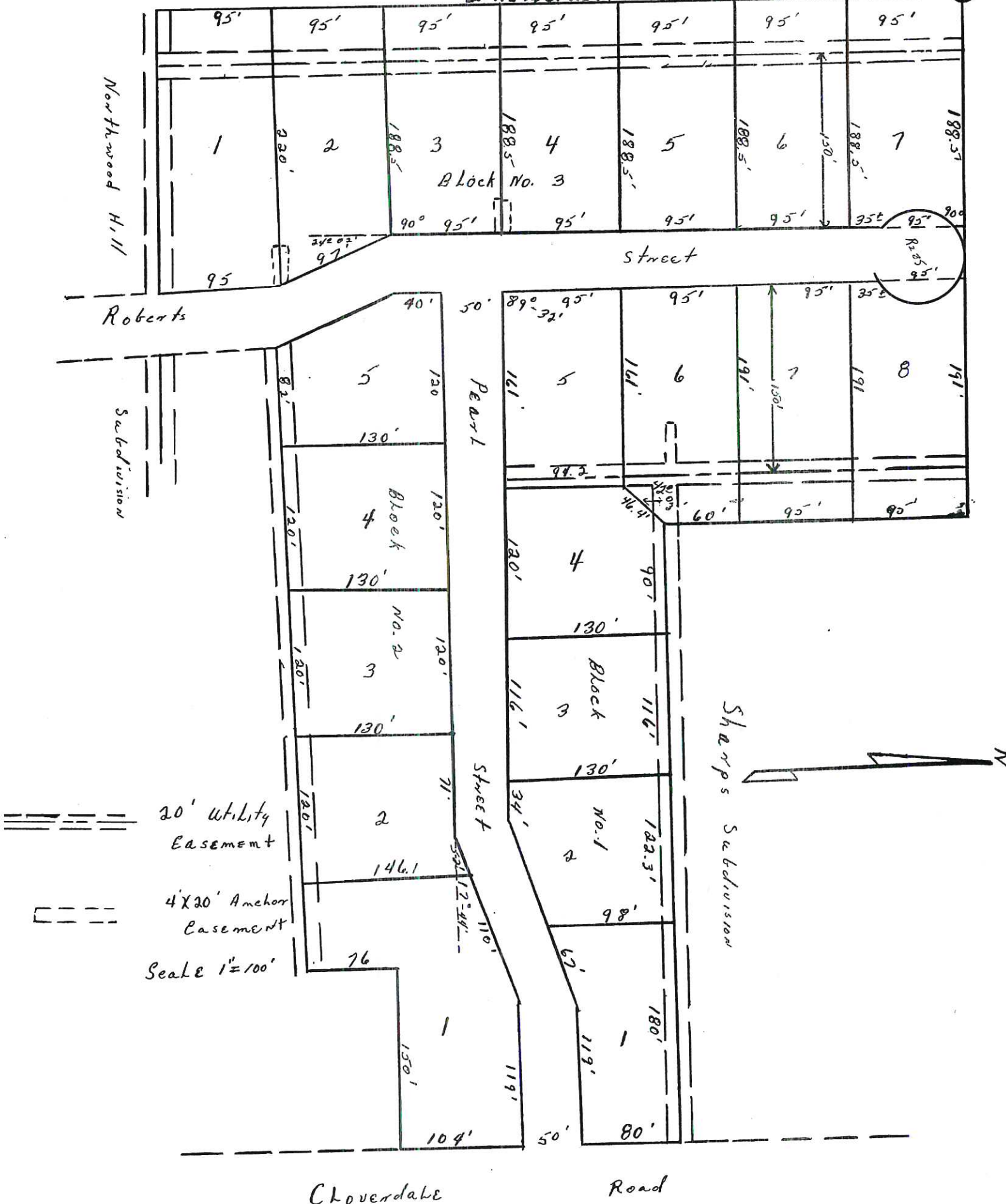


THIS POINT IS 396' EAST OF N.W. COR. OF S.W. 1/4
OF NE 1/4 OF NE 1/4 OF SEC. 28 - T2 R 11 W



Plat showing, at reduced scale, SHARP'S SUBDIVISION, in Lauderdale County, Alabama, according to the plat thereof recorded in the office of the Judge of Probate of said County in Plat Book # 3, at page 70.

