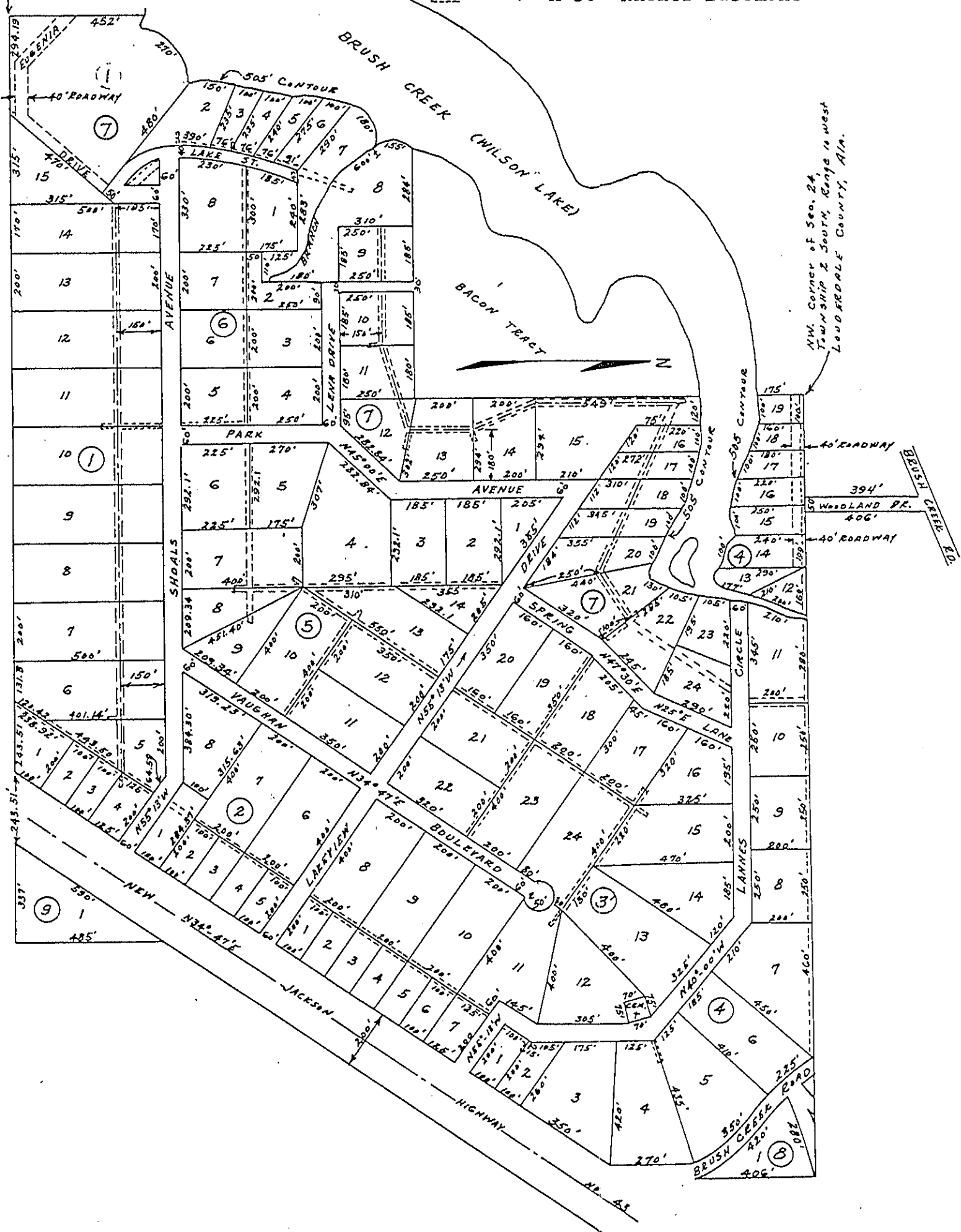


S.W. CORNER OF THE SE 1/4 OF THE NE 1/4,
 SEC. 23, TOWNSHIP 2 SOUTH, RANGE 10 WEST,
 LAUDERDALE COUNTY, ALABAMA

----- 20' Utility Easement
 ===== 4' x 30' Anchor Easement



Plat showing at reduced scale SHOALS ACRES, according to the plat thereof recorded in the office of the Judge of Probate of Lauderdale County, Alabama in Plat Book 3, at page 59.