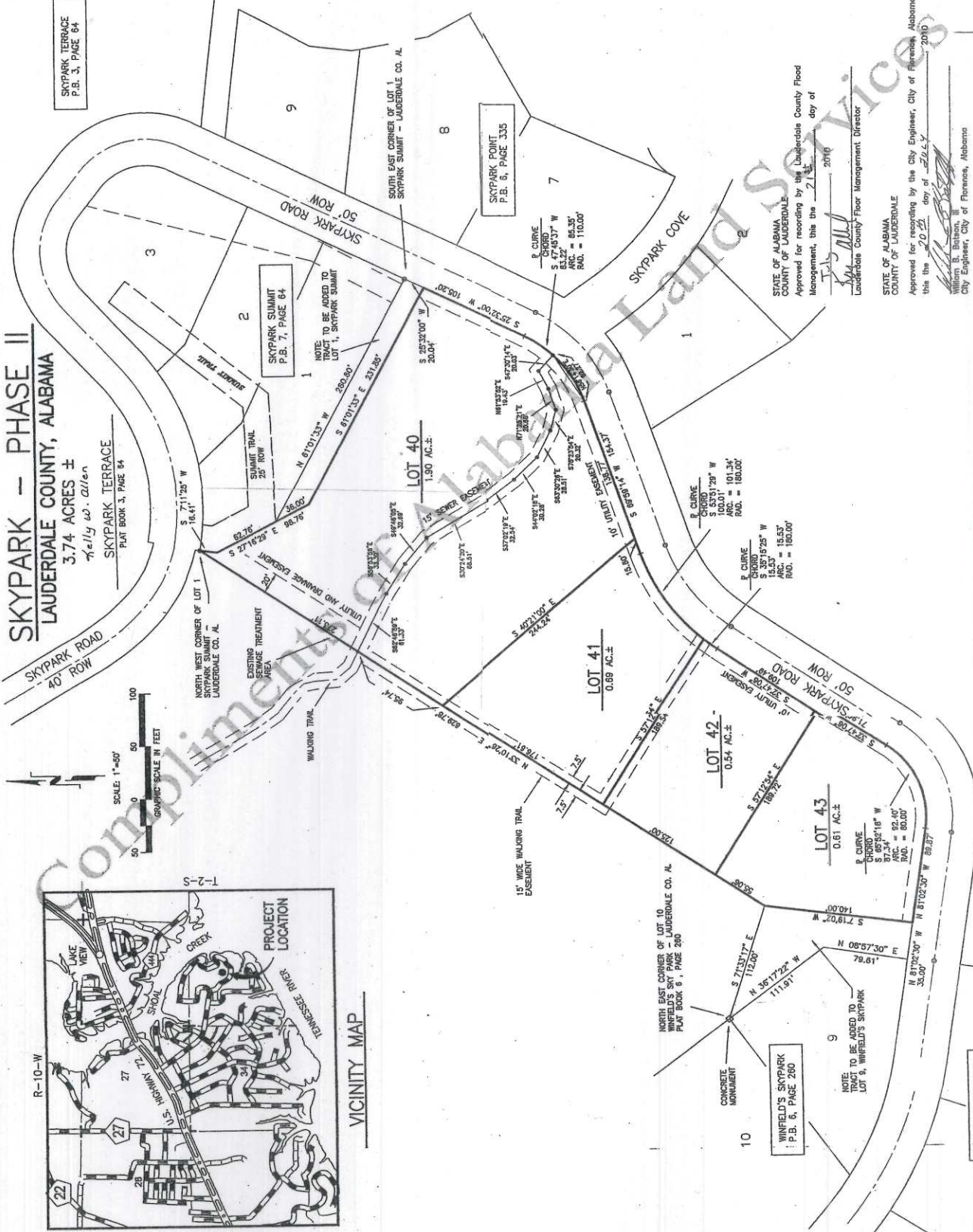


# SKYPARK - PHASE II LAUDERDALE COUNTY, ALABAMA

3.74 ACRES ±  
KELLY W. ALLEN

SKYPARK TERRACE  
PLAT BOOK 3, PAGE 64

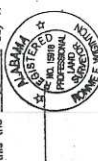


STATE OF ALABAMA  
COUNTY OF LAUDERDALE

I, Ronnie E. Wightman, a registered land surveyor in said State and holder of License No. 10000, do hereby certify that the foregoing plat of land designated as SKYPARK - PHASE II, on the annexed plat situated in Section 36, Township 2 South, Range 12 West, is a true and correct copy of the original plat as recorded in the public records of said State, and that the bearings and lengths of each line, as well as the size of the lots, are in accordance with the original plat and show the proper relationship to the U.S. Government Survey of Public Lands in the State of Alabama.

I hereby certify/state that all parts of this survey and drawing have been completed in accordance with the requirements of the Minimum Technical Standards for the Practice of Land Surveying in the State of Alabama.

Given under my hand and seal, this the 2nd day of July, 2010



STATE OF ALABAMA  
COUNTY OF LAUDERDALE

I, Kelly W. Allen, duly authorized and duly sworn, owner of the property plotted on the annexed plat and designated as SKYPARK - PHASE II, do hereby accept and expressly agree to the foregoing plat and to the contents of the contents of said plat, executed the same voluntarily on the day the same bears date.

Given under our hand this the 2nd day of July, 2010

Kelly W. Allen

STATE OF ALABAMA  
COUNTY OF LAUDERDALE

I, the undersigned, a notary public in and for said State and County, hereby certify that, Kelly W. Allen, whose name is signed to the foregoing plat, is the person whose name appears in the contents of said plat, executed the same voluntarily on the day the same bears date.

Given under my hand and seal this the 2nd day of July, 2010

Notary Public

STATE OF ALABAMA  
COUNTY OF LAUDERDALE

I, Dewey D. Mitchell, Probate Judge of Lauderdale County, Alabama, do hereby certify that the foregoing plat was filed in my office in the office of the Judge of Probate, Lauderdale County, Alabama in Plat Book 1 Page 265

this the 21st day of July, 2010

Dewey D. Mitchell  
Probate Judge, Lauderdale County, Alabama

STATE OF ALABAMA  
COUNTY OF LAUDERDALE

Approved for recording by the Northwest Alabama Regional Health Department this the 21st day of July, 2010

Environmentalist

The lot(s) on this plat are subject to approval or deletion by the Lauderdale County Health Department. The approvals may contain certain conditions pertaining to the installation of wastewater treatment system(s) that could restrict the use of the lot(s) or obligate the owner to special maintenance and reporting requirements. These conditions are on file with the said health department and are made a part of this plat as it set out hereon.

STATE OF ALABAMA  
COUNTY OF LAUDERDALE

Approved for recording by the Lauderdale County Flood Management, this the 21st day of July, 2010

Lauderdale County Flood Management Director

STATE OF ALABAMA  
COUNTY OF LAUDERDALE

Approved for recording by the City Engineer, City of Florence, Alabama this the 20th day of July, 2010

City Engineer, City of Florence, Alabama

STATE OF ALABAMA  
COUNTY OF LAUDERDALE

Approved for recording by the County Engineer, Lauderdale County, Alabama this the 21st day of July, 2010

Ken Alford, County Engineer  
Lauderdale County, Alabama

STATE OF ALABAMA  
COUNTY OF LAUDERDALE

Approved for recording by the Lauderdale County 911 Board this the 16th day of July, 2010

EB11 Operator

STATE OF ALABAMA  
COUNTY OF LAUDERDALE

Approved for recording by the Lauderdale County Board of Planning this the 21st day of July, 2010

Chairman  
Planning Commission

STATE OF ALABAMA  
COUNTY OF LAUDERDALE

Approved for recording by the Lauderdale County Board of Planning this the 21st day of July, 2010

Chairman  
Planning Commission

STATE OF ALABAMA  
COUNTY OF LAUDERDALE

Approved for recording by the Lauderdale County Board of Planning this the 21st day of July, 2010

Chairman  
Planning Commission

STATE OF ALABAMA  
COUNTY OF LAUDERDALE

Approved for recording by the Lauderdale County Board of Planning this the 21st day of July, 2010

Chairman  
Planning Commission

STATE OF ALABAMA  
COUNTY OF LAUDERDALE

Approved for recording by the Lauderdale County Board of Planning this the 21st day of July, 2010

Chairman  
Planning Commission

STATE OF ALABAMA  
COUNTY OF LAUDERDALE

Approved for recording by the Lauderdale County Board of Planning this the 21st day of July, 2010

Chairman  
Planning Commission

STATE OF ALABAMA  
COUNTY OF LAUDERDALE

Approved for recording by the Lauderdale County Board of Planning this the 21st day of July, 2010

Chairman  
Planning Commission

STATE OF ALABAMA  
COUNTY OF LAUDERDALE

Approved for recording by the Lauderdale County Board of Planning this the 21st day of July, 2010

Chairman  
Planning Commission

STATE OF ALABAMA  
COUNTY OF LAUDERDALE

Approved for recording by the Lauderdale County Board of Planning this the 21st day of July, 2010

Chairman  
Planning Commission

STATE OF ALABAMA  
COUNTY OF LAUDERDALE

Approved for recording by the Lauderdale County Board of Planning this the 21st day of July, 2010

Chairman  
Planning Commission

STATE OF ALABAMA  
COUNTY OF LAUDERDALE

Approved for recording by the Lauderdale County Board of Planning this the 21st day of July, 2010

Chairman  
Planning Commission

SKYPARK - PHASE II  
LAUDERDALE COUNTY, ALABAMA

PRICE & RIDER ENGINEERING, INC.  
288 WEST TRENDSIDE STREET, SUITE 200  
FLORENCE, ALABAMA 36633  
PHONE: (205) 769-8979 FAX: (205) 769-8661

DATE: 7-20-2010  
SCALE: NOTED  
BY: H.K.  
CHECKED: D.C.P.  
APPROVED: [Signature]

MINIMUM BUILDING SETBACKS:  
25' FRONT  
10' SIDE  
10' REAR

NOTE: THE ADJUSTED RELATIVE ERROR OF CLOSURE OF THIS SURVEY IS LESS THAN 1 IN 10,000

SKYPARK POINT  
P.B. 6, PAGE 335

SKYPARK SUMMIT  
P.B. 7, PAGE 64

SKYPARK SUMMIT  
P.B. 3, PAGE 64

SKYPARK SUMMIT  
P.B. 3, PAGE 64

SKYPARK SUMMIT  
P.B. 3, PAGE 64

SKYPARK SUMMIT  
P.B. 3, PAGE 64

SKYPARK SUMMIT  
P.B. 3, PAGE 64

SKYPARK SUMMIT  
P.B. 3, PAGE 64

SKYPARK SUMMIT  
P.B. 3, PAGE 64

SKYPARK SUMMIT  
P.B. 3, PAGE 64

SKYPARK SUMMIT  
P.B. 3, PAGE 64

7/205