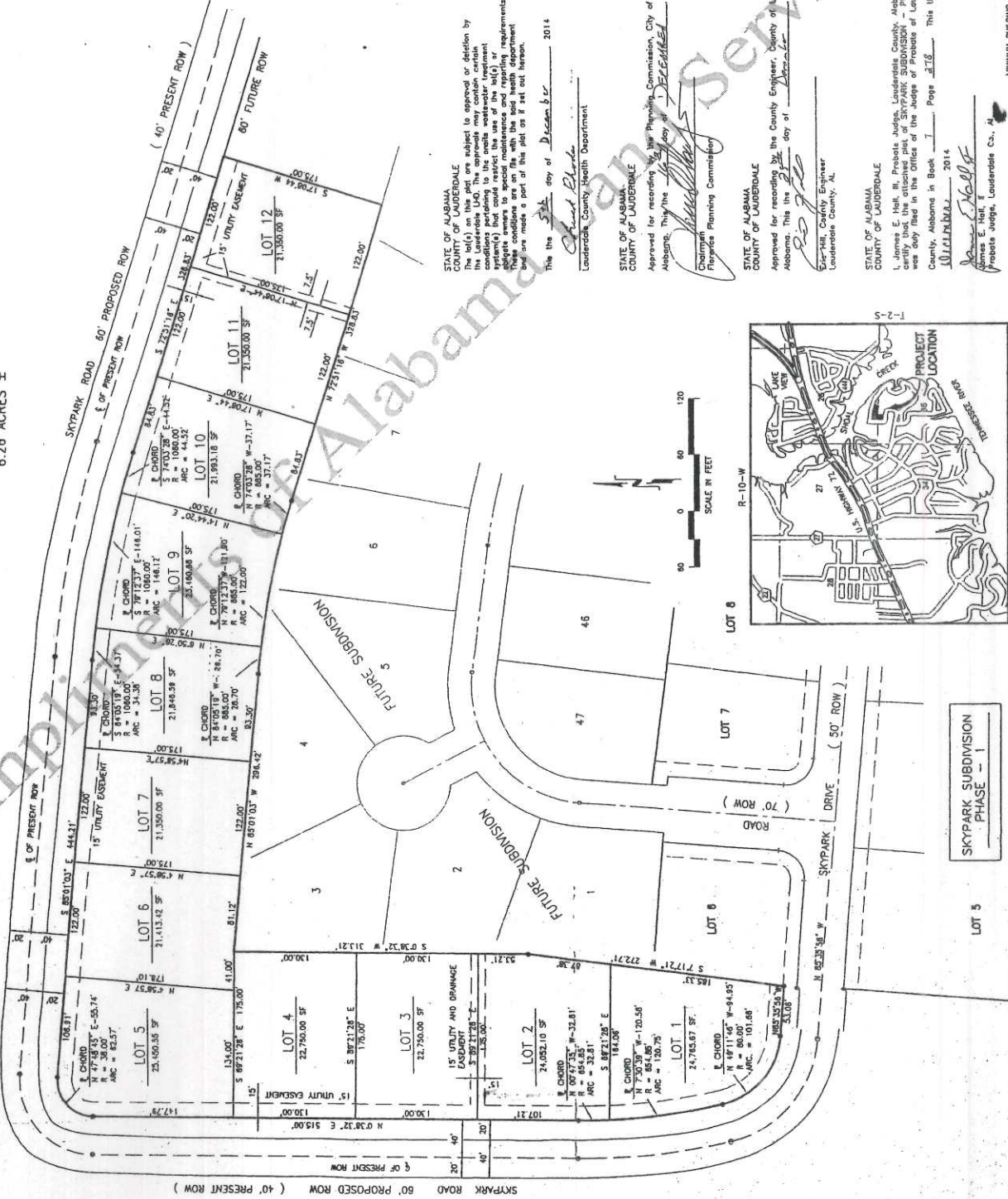


L10

SKYPARK SUBDIVISION - PHASE III

PART OF THE NORTHWEST 1/2 OF 35 AND
PART OF THE SOUTHWEST 1/2 OF 26
T-2-S, R-10-W
6.26 ACRES ±



STATE OF ALABAMA
COUNTY OF LAUDERDALE

I, Ronny E. Wiginton, a registered land surveyor in said State and County, hereby certify that I have surveyed that certain tract of land designated as SKYPARK SUBDIVISION - PHASE III on the attached plat, located in the Northwest 1/4 of Section 35, T-2-S, R-10-W, and the Southwest 1/4 of Section 26, T-2-S, R-10-W, in the County of Lauderdale, Alabama, showing the bearings and lengths of each line, as well as the size of the tracts. I further certify that the attached plat is a true and correct plat of said subdivision and that the same conforms to the requirements of the Survey of Public Lands in the State of Alabama.

I hereby certify/execute these all parts of this instrument and declare that I have been duly sworn to the duties of the Surveyor of the State of Alabama, Technical Standards for the Practice of Land Surveying in the State of Alabama.

Given under my hand and seal, this the 22nd day of November, 2014.

Ronny E. Wiginton
Alabama Registration No. 15818



STATE OF ALABAMA
COUNTY OF LAUDERDALE

I, Kelly W. Allen, duly authorized officer of SKYPARK DEVELOPMENTS, INC. owner of the land and designated as SKYPARK SUBDIVISION - PHASE III, do hereby consent and approve about the above described plat and the same, and in consideration of the respective benefits to the City of Florence, Alabama, the County of Lauderdale, Alabama, successors and assigns, the easements shown hereon for electric, telephone, water, gas and sewer lines, and other utility easements and easements of right to use, including the right to cut and such utilities over the respective easements, including the right to cut and clear trees or parts thereof or other objects that may injure or endanger utility clear lines or parts thereof, this the 22nd day of November, 2014.

Given under my hand and seal, this the 22nd day of November, 2014.

Kelly W. Allen, President

STATE OF ALABAMA
COUNTY OF LAUDERDALE

I, the undersigned, a notary public in said State and County, hereby certify that Kelly W. Allen, whose name is signed to the foregoing plat and who is the duly authorized officer of SKYPARK DEVELOPMENTS, INC. owner of the land of said plat, executed the same voluntarily on the day the same bears date.

Given under my hand and seal, this the 22nd day of November, 2014.

Nelroy Public
Notary Public

STATE OF ALABAMA
COUNTY OF LAUDERDALE

Approved for recording by the City Engineer, City of Florence, Alabama, this the 16th day of December, 2014.

William B. Batten, III, City Engineer
City of Florence, AL

STATE OF ALABAMA
COUNTY OF LAUDERDALE

Approved for approval by the E911 Board, as authorized by the Lauderdale County Board, Alabama, hereby approved the within plat for the recording of the same in the Probate Office of Lauderdale County, Alabama, this the 22nd day of November, 2014.

ES11 Director

STATE OF ALABAMA
COUNTY OF LAUDERDALE

Approved for recording by the Lauderdale County Flood Management Department, Alabama, hereby approved the within plat for the recording of same in the Probate Office of Lauderdale County, Alabama, this the 22nd day of November, 2014.

Lauderdale County Flood Management Director

STATE OF ALABAMA
COUNTY OF LAUDERDALE

Approved for recording by the Planning Commission, City of Florence, Alabama, this the 16th day of December, 2014.

Chairman Planning Commission

STATE OF ALABAMA
COUNTY OF LAUDERDALE

Approved for recording by the County Engineer, County of Lauderdale, Alabama, this the 22nd day of November, 2014.

County Engineer

STATE OF ALABAMA
COUNTY OF LAUDERDALE

I, James E. Hall, III, Probate Judge, Lauderdale County, Alabama, hereby certify that the attached plat of SKYPARK SUBDIVISION - PHASE III, was duly filed in the Office of the Judge of Probate of Lauderdale County, Alabama in Book 14 Page 378. This the 24th day of November, 2014.

James E. Hall, III
Probate Judge, Lauderdale Co., AL

STATE OF ALABAMA
COUNTY OF LAUDERDALE

Approved for recording by the Lauderdale County Flood Management Department, Alabama, hereby approved the within plat for the recording of same in the Probate Office of Lauderdale County, Alabama, this the 22nd day of November, 2014.

Lauderdale County Flood Management Director

STATE OF ALABAMA
COUNTY OF LAUDERDALE

Approved for recording by the Lauderdale County Flood Management Department, Alabama, hereby approved the within plat for the recording of same in the Probate Office of Lauderdale County, Alabama, this the 22nd day of November, 2014.

Lauderdale County Flood Management Director



SKYPARK SUBDIVISION - PHASE III
LAUDERDALE COUNTY, ALABAMA

PRICE & RIDER ENGINEERING, INC.
200 PINE TREE DRIVE
FLORENCE, ALABAMA 36505
TEL: (205) 798-8974 FAX: (205) 798-8161

DRAWN: N.K. DATE: 10-31-2014
CHECKED: J.O.S.P. SCALE: 1"=50'
APPROVED: _____

7/278