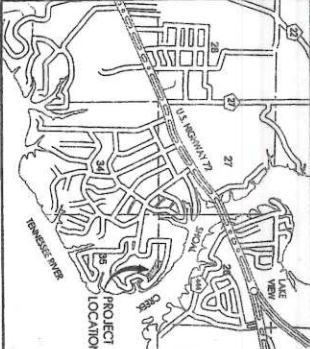


CERTIFICATIONS & ENDORSEMENTS FOR PROPOSED PLATS

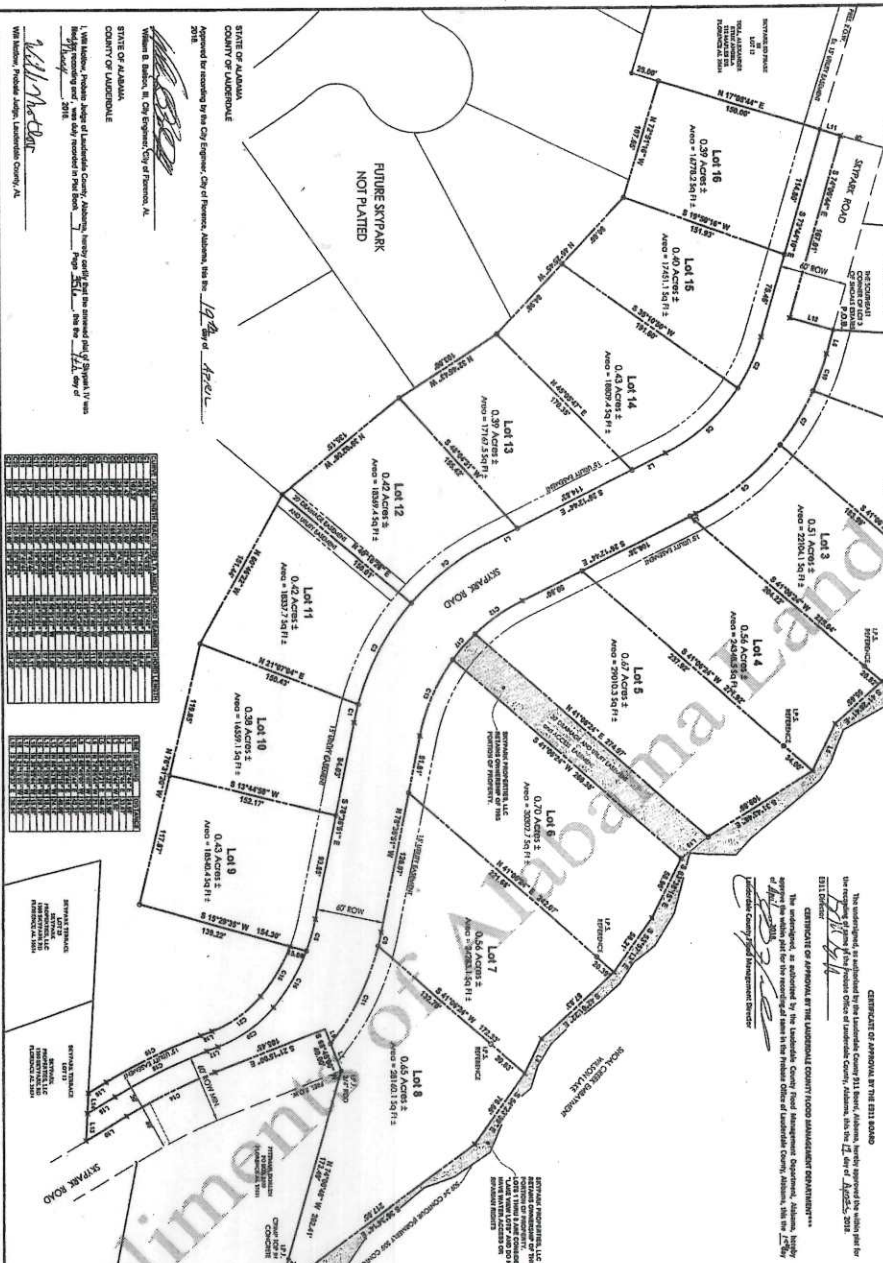
CERTIFICATE OF AUTHORIZATION FOR A PROFESSIONAL SURVEYOR
 V. Williams, H. Alexander, R. A. professional engineer licensed by the State of Alabama, License Number 3931, as his/her
 certificate has been renewed and the same is in full force and effect. The undersigned hereby certifies that the survey
 and plat shown on this document were prepared by him or her or under his or her direct supervision and control and
 that the same are true and correct in accordance with the provisions of the Alabama Surveying Code, Title 3, Chapter
 1, Sections 3-1-1 through 3-1-10. The undersigned further certifies that the survey and plat shown on this document
 were prepared in accordance with the provisions of the Alabama Surveying Code, Title 3, Chapter 1, Sections 3-1-1
 through 3-1-10, and that the same are true and correct in accordance with the provisions of the Alabama Surveying
 Code, Title 3, Chapter 1, Sections 3-1-1 through 3-1-10.



CERTIFICATE OF APPROVAL BY THE COUNTY COMMISSIONERS
 The undersigned, in and for the County of Lauderdale, Alabama, hereby approve the validity and the
 propriety of the proposed plat shown on this document, and the same are true and correct in accordance with
 the provisions of the Alabama Surveying Code, Title 3, Chapter 1, Sections 3-1-1 through 3-1-10.
 City of Prichard, Alabama
 City of Prichard, Alabama
 City of Prichard, Alabama
 City of Prichard, Alabama



VICINITY MAP
 NOT TO SCALE
 SURVEYED CORNER AND RESECTION FOR LOTS 1-18



STATE OF ALABAMA
 COUNTY OF LAUDERDALE
 Approved by recording by the City Engineer, City of Prichard, Alabama, this 19th day of April, 2018.
 William B. Barlow, Jr., City Engineer, City of Prichard, AL.
 STATE OF ALABAMA
 COUNTY OF LAUDERDALE
 I, V. Williams, H. Alexander, R.A., professional engineer licensed by the State of Alabama, License No. 3931, as his/her
 duly authorized and duly qualified professional engineer, do hereby certify that the survey and plat shown on this
 document were prepared by me or under my direct supervision and control and that the same are true and correct
 in accordance with the provisions of the Alabama Surveying Code, Title 3, Chapter 1, Sections 3-1-1 through 3-1-10.
 V. Williams, H. Alexander, R.A.
 Professional Engineer, License No. 3931, State of Alabama



STATE OF ALABAMA
COUNTY OF LAUDERDALE
 V. Williams, H. Alexander, R.A., a Licensed Professional Land Surveyor in the State of Alabama, for Civil Group, LLC, do hereby
 certify that the survey and plat shown on this document were prepared by him or her or under his or her direct supervision and control and
 that the same are true and correct in accordance with the provisions of the Alabama Surveying Code, Title 3, Chapter 1, Sections 3-1-1
 through 3-1-10. The undersigned further certifies that the survey and plat shown on this document were prepared in accordance
 with the provisions of the Alabama Surveying Code, Title 3, Chapter 1, Sections 3-1-1 through 3-1-10, and that the same are true and
 correct in accordance with the provisions of the Alabama Surveying Code, Title 3, Chapter 1, Sections 3-1-1 through 3-1-10.
 City of Prichard, Alabama
 City of Prichard, Alabama
 City of Prichard, Alabama
 City of Prichard, Alabama

STATE OF ALABAMA
 COUNTY OF LAUDERDALE
 Approved by recording by the Planning Commission of the City of Prichard, Alabama, this 19th day of April, 2018.
 William B. Barlow, Jr., City Engineer, City of Prichard, AL.
 STATE OF ALABAMA
 COUNTY OF LAUDERDALE
 I, V. Williams, H. Alexander, R.A., professional engineer licensed by the State of Alabama, License No. 3931, as his/her
 duly authorized and duly qualified professional engineer, do hereby certify that the survey and plat shown on this
 document were prepared by me or under my direct supervision and control and that the same are true and correct
 in accordance with the provisions of the Alabama Surveying Code, Title 3, Chapter 1, Sections 3-1-1 through 3-1-10.
 V. Williams, H. Alexander, R.A.
 Professional Engineer, License No. 3931, State of Alabama

FINAL PLAT SKYPARK IV LAUDERDALE COUNTY, ALABAMA

civil group engineering • surveying
 616 EAST HANCOCK AVE., SUITE B
 PRICHARD, ALABAMA 36067
 PHONE: 256-232-1111 FAX: 256-232-1112

1 OF 1

7/356