

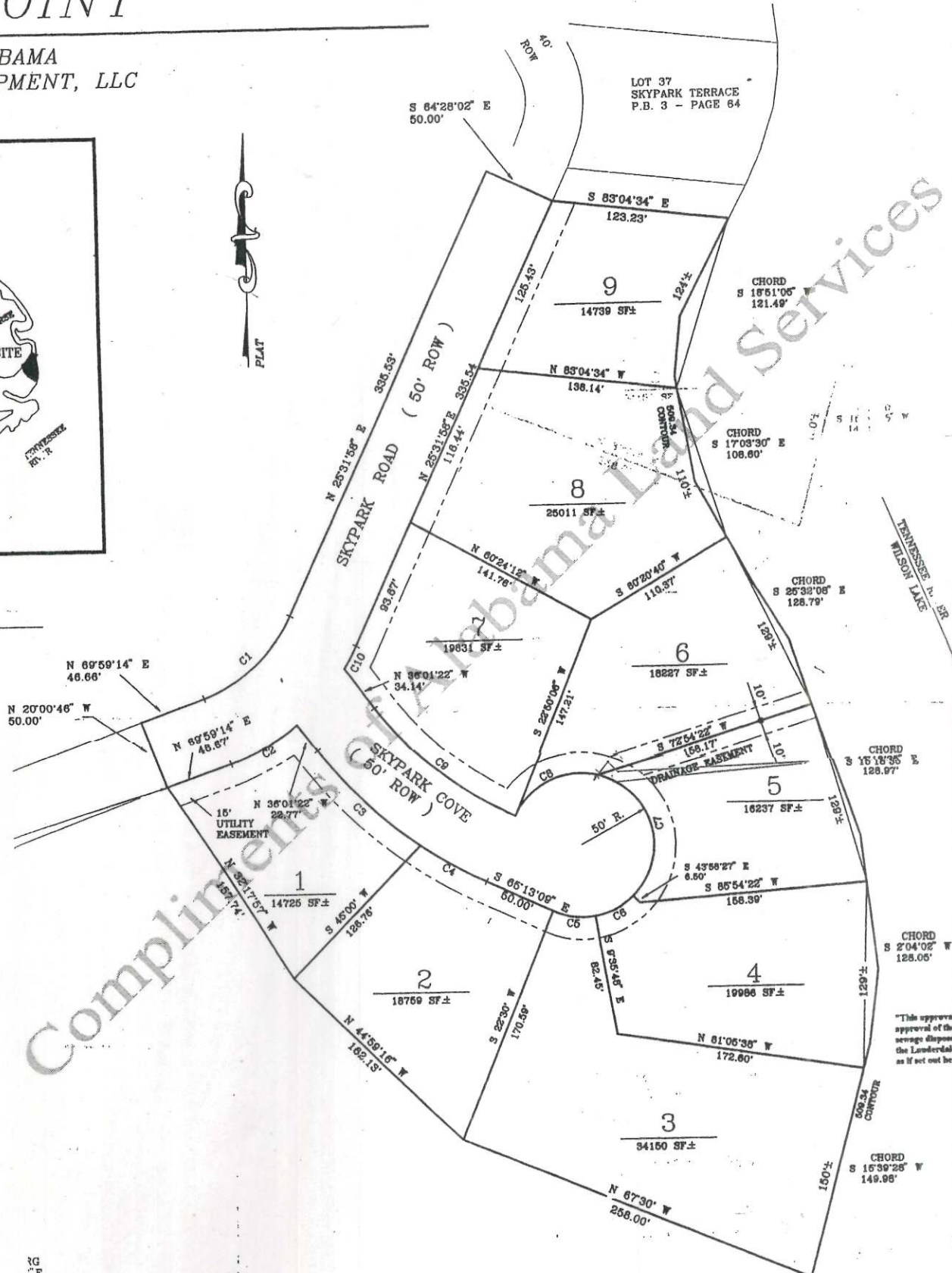
SKYPARK POINT 6-335

POINT

ALABAMA
ELOPMENT, LLC



AP.



Compliments of Alabama Land Services

"This approval is for recording purposes only. This approval of the common sewage disposal system or individual sewage disposal systems will be permitted at a later date with the Lauderdale County Health Department, which conditions as set out hereon."

RG
E
E
E
E
E
E
E
E
E
E

STATE OF ALABAMA
COUNTY OF LAUDERDALE
I, Dewey D. Mitchell, Probate Judge, Lauderdale County, Alabama, hereby certify that the attached plat of SKYPARK POINT, Alabama, was duly filed in the Office of the Judge of Probate of Lauderdale County, Alabama in Book 6 Page 335 This the 31st day of December, 1999.

Dewey D. Mitchell
Probate Judge, Lauderdale County, Alabama

STATE OF ALABAMA
COUNTY OF LAUDERDALE
Approved for recording by the City Engineer, City of Florence, Alabama, This the 28th day of DECEMBER, 1999

William B. Batson, III, City Engineer
City of Florence, Alabama

STATE OF ALABAMA
COUNTY OF LAUDERDALE
Approved for recording by the Chairman, Commission, City of Florence, Alabama, This the 28th day of DEC.

Jimmy Sandlin, Chairman
Florence Planning Commission