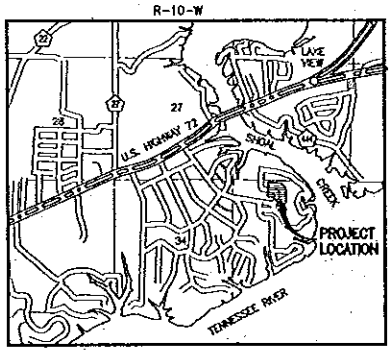
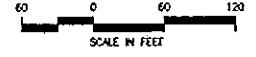
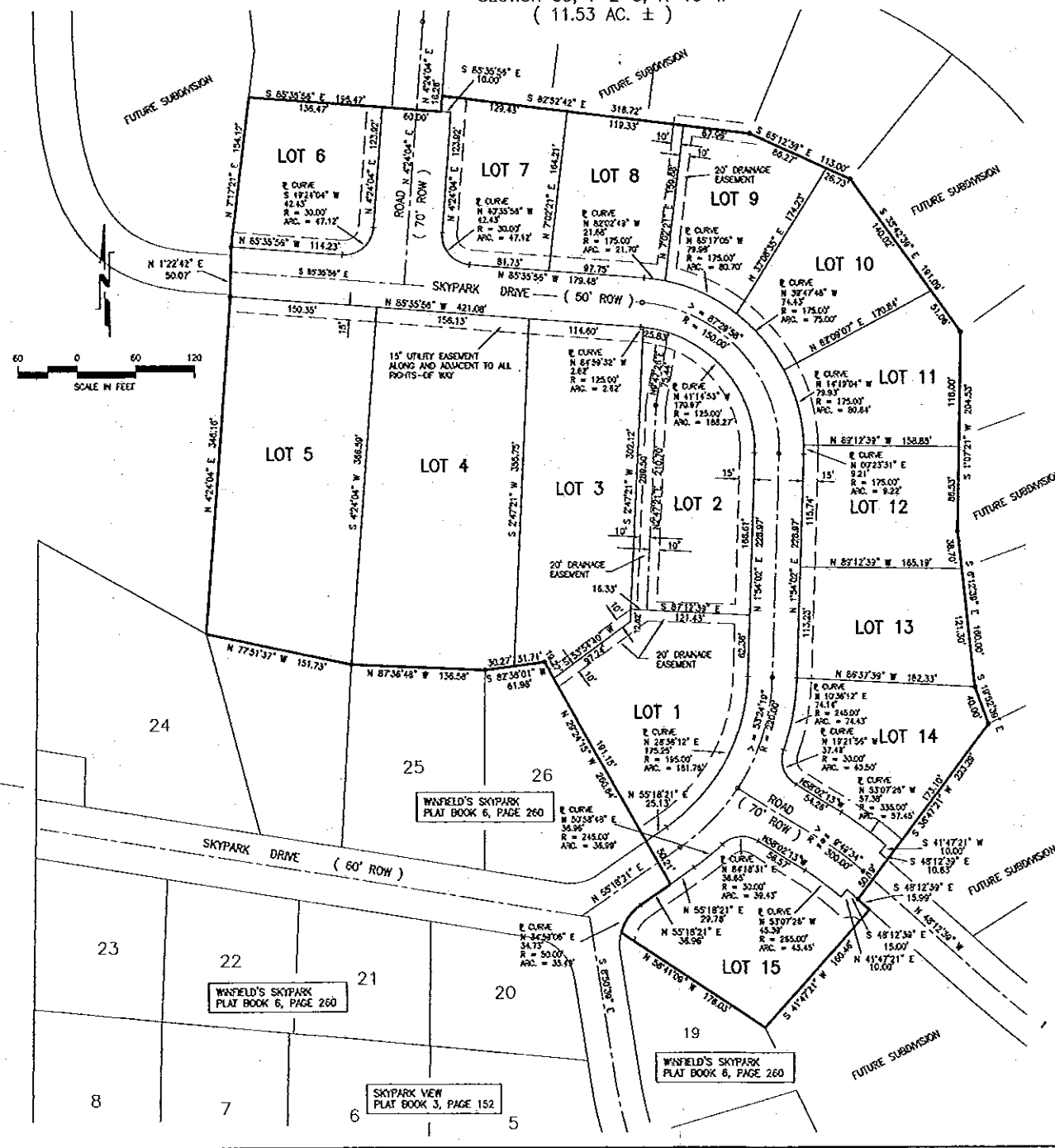


# SKYPARK SUBDIVISION - PHASE 1

231

SECTION 35, T-2-S, R-10-W  
( 11.53 AC. ± )



VICINITY MAP

STATE OF ALABAMA  
COUNTY OF LAUDERDALE  
The plat(s) on this plot are subject to approval or deletion by the Lauderdale LHD. The approvals may contain certain conditions pertaining to the county wastewater treatment system(s) that would restrict the use of the plat(s) or obligate owners to special maintenance and reporting requirements. These conditions are on file with the said health department and are made a part of this plat as if set out herein.

This the 8th day of December, 2011  
*John Doy*  
Lauderdale County Health Department

STATE OF ALABAMA  
COUNTY OF LAUDERDALE  
Approved for recording by the Planning Commission, City of Florence, Alabama, this the 8th day of December, 2011.

*April [Signature]*  
Chairman  
Florence Planning Commission

STATE OF ALABAMA  
COUNTY OF LAUDERDALE  
Approved for recording by the County Engineer, County of Lauderdale, Alabama, this the 6th day of Feb, 2011 2012.

*Ken Allard*  
Ken Allard, County Engineer  
Lauderdale County, AL

STATE OF ALABAMA  
COUNTY OF LAUDERDALE  
I, Dewey D. Mitchell, Probate Judge, Lauderdale County, Alabama, hereby certify that the attached plat of SKYPARK SUBDIVISION - PHASE 1, was duly filed in the Office of the Judge of Probate of Lauderdale County, Alabama in Book 7, Page 331. This the 6th day of February, 2011 2012.

*Dewey D. Mitchell*  
Dewey D. Mitchell, Probate Judge, Lauderdale Co., AL

STATE OF ALABAMA  
COUNTY OF LAUDERDALE  
I, Ronnie E. Winton, a registered land surveyor in said State and County, hereby certify that I have surveyed that certain tract of land designated as SKYPARK SUBDIVISION - PHASE 1 on the annexed plat, situated in the North West 1/4 of Section 35, T-2-S, R-10-W in Lauderdale County, Alabama. I have subdivided said tract showing the easements therein, giving the bearings and lengths of each line, as well as the size of the tracts. I further certify that the annexed plat is a true and correct plot of said subdivision and shows the proper relationship to the U.S. Government Survey of Public Lands in the State of Alabama.

I hereby certify/attest that all parts of this survey and drawing have been completed in accordance with the requirements of the Minimum Technical Standards for the Practice of Land Surveying in the State of Alabama.  
Given under my hand and seal, this the 21st day of November, 2011.

*Ronnie E. Winton*  
Ronnie E. Winton  
Alabama Registration No. 15918



STATE OF ALABAMA  
COUNTY OF LAUDERDALE  
I, Kelly W. Allen, duly authorized officer of SKYPARK DEVELOPMENTS, INC., owner of the property platted on the annexed plat and designated as SKYPARK SUBDIVISION - PHASE 1, do hereby accept and expressly adopt said plat as the official record of same, and in consideration of the respective benefits to accrue to us, our successors, and assigns, do hereby grant and convey to the City of Florence, Alabama, the County of Lauderdale, the successors and assigns, the easements shown hereon for electric, telephone, water, gas and sewer lines, and also ingress and egress, corresponding the privileges necessary for the installation and maintenance of such UTILITIES over the respective easements, including the right to cut and trim trees or parts thereof or other objects that may injure or endanger utility.

Given under my hand and seal, this the 22nd day of November, 2011.  
*Kelly W. Allen*  
Kelly W. Allen, President

STATE OF ALABAMA  
COUNTY OF LAUDERDALE  
I, the undersigned, a notary public in said State and County, hereby certify that Kelly W. Allen, whose name is signed to the foregoing plat and who is known by me, acknowledged on this date that being informed of the contents of said plat, executed the same voluntarily on the day the same bears date.  
Given under my hand and seal, this the 22nd day of November, 2011.

*Notary Public*  
Notary Public  
MY COMMISSION EXPIRES 11-14-12

STATE OF ALABAMA  
COUNTY OF LAUDERDALE  
Approved for recording by the City Engineer, City of Florence, Alabama, this the 24th day of January, 2011.

*Notary Public*  
Notary Public  
MY COMMISSION EXPIRES 11-14-12

CERTIFICATE OF APPROVAL BY THE E111 BOARD  
The undersigned, as authorized by the Lauderdale County E111 Board, Alabama, hereby approved the within plat for the recording of the same in the Probate Office of Lauderdale County, Alabama, this the 2nd day of Feb, 2011 2012.

*E111 Director*  
E111 Director  
CERTIFICATE OF APPROVAL BY THE LAUDERDALE COUNTY FLOOD MANAGEMENT DEPARTMENT  
The undersigned as authorized by the Lauderdale County Flood Management Department, Alabama, hereby approved the within plat for the recording of same in the Probate Office of Lauderdale County, Alabama, this the 6th day of Feb, 2011 2012.

*Lauderdale County Flood Management Director*  
Lauderdale County Flood Management Director

|  |                   |
|--|-------------------|
| SKYPARK SUBDIVISION PHASE I<br>LAUDERDALE COUNTY, ALABAMA  |                   |
| PRICE & RIDER ENGINEERING, INC.<br>228 WEST TENNESSEE STREET<br>FLORENCE, ALABAMA<br>PH. (256) 768-8074 FAX (256) 768-4251 |                   |
| DRAWN BY   | DATE              |
| CHECKED BY   | SCALE 1"=60'      |
| REVISIONS  | 08-248-FINAL PLAT |
| SHEET<br><b>1</b>  |                   |

MINIMUM BUILDING SETBACKS  
25' FRONT  
10' SIDE  
10' REAR

NOTE:  
15' UTILITY EASEMENT  
ALONG AND ADJACENT TO ALL  
RIGHTS-OF-WAY