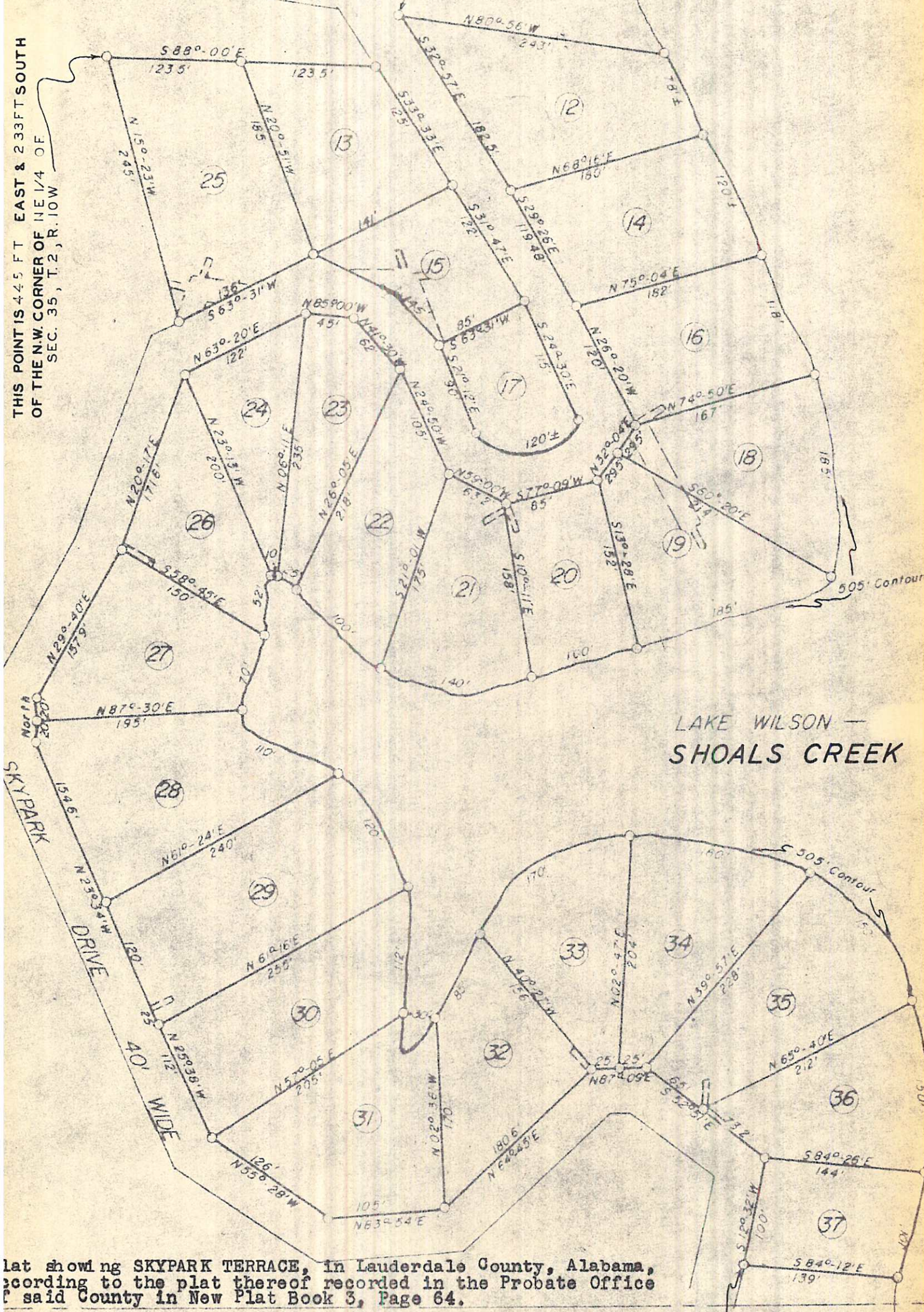


S 80°-56'E  
inway South Side

This point is 3339.69 East & 1970.6 South  
of the N.W. Corner of Sec 35, T.2, R.10W.,  
Lauderdale County, Ala.

THIS POINT IS 445 FT EAST & 233 FT SOUTH  
OF THE N.W. CORNER OF NE 1/4 OF  
SEC. 35, T.2, R.10W



LAKE WILSON —  
SHOALS CREEK

Plat showing SKYPARK TERRACE, in Lauderdale County, Alabama,  
according to the plat thereof recorded in the Probate Office  
of said County in New Plat Book 3, Page 64.

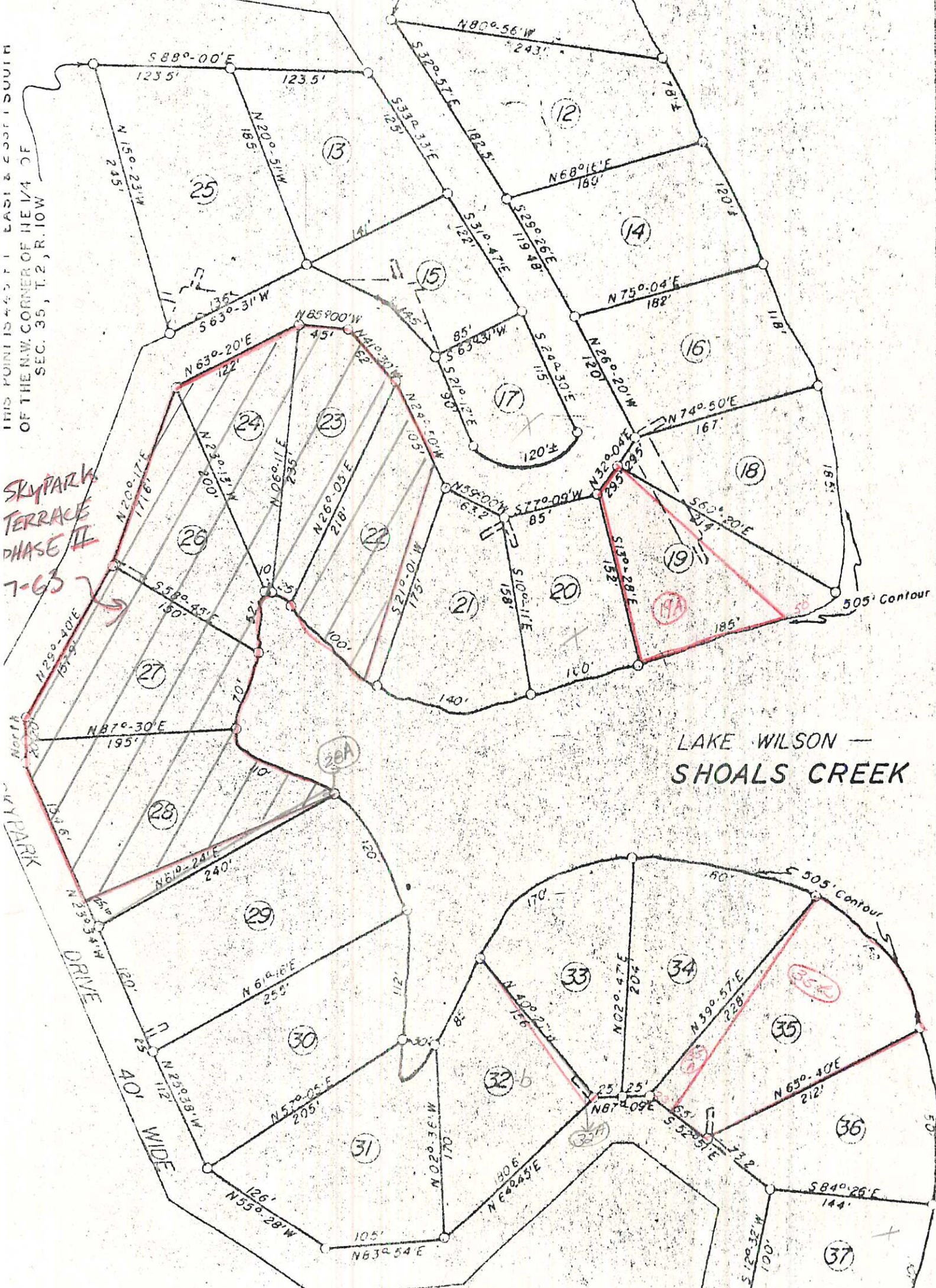
This point is 849.96 East &  
34.80 North of the SW Corner  
of the NW 1/4 of the SE 1/4

S 80°-56' E  
by South Side

This point is 3339.69 East & 197.06' South  
of the N.W. Corner of Sec. 35, T.2, R.10W.,  
Lauderdale County, Ala.

THIS POINT IS 45.5' EAST & 200.1' SOUTH  
OF THE N.W. CORNER OF THE 1/4 OF  
SEC. 35, T.2, R.10W.

SKYPARK  
TERRACE  
PHASE II  
7-63



LAKE WILSON -  
SHOALS CREEK

at showing SKYPARK TERRACE, in Lauderdale County, Alabama,  
according to the plat thereof recorded in the Probate Office  
said County in New Plat Book 3, Page 64.