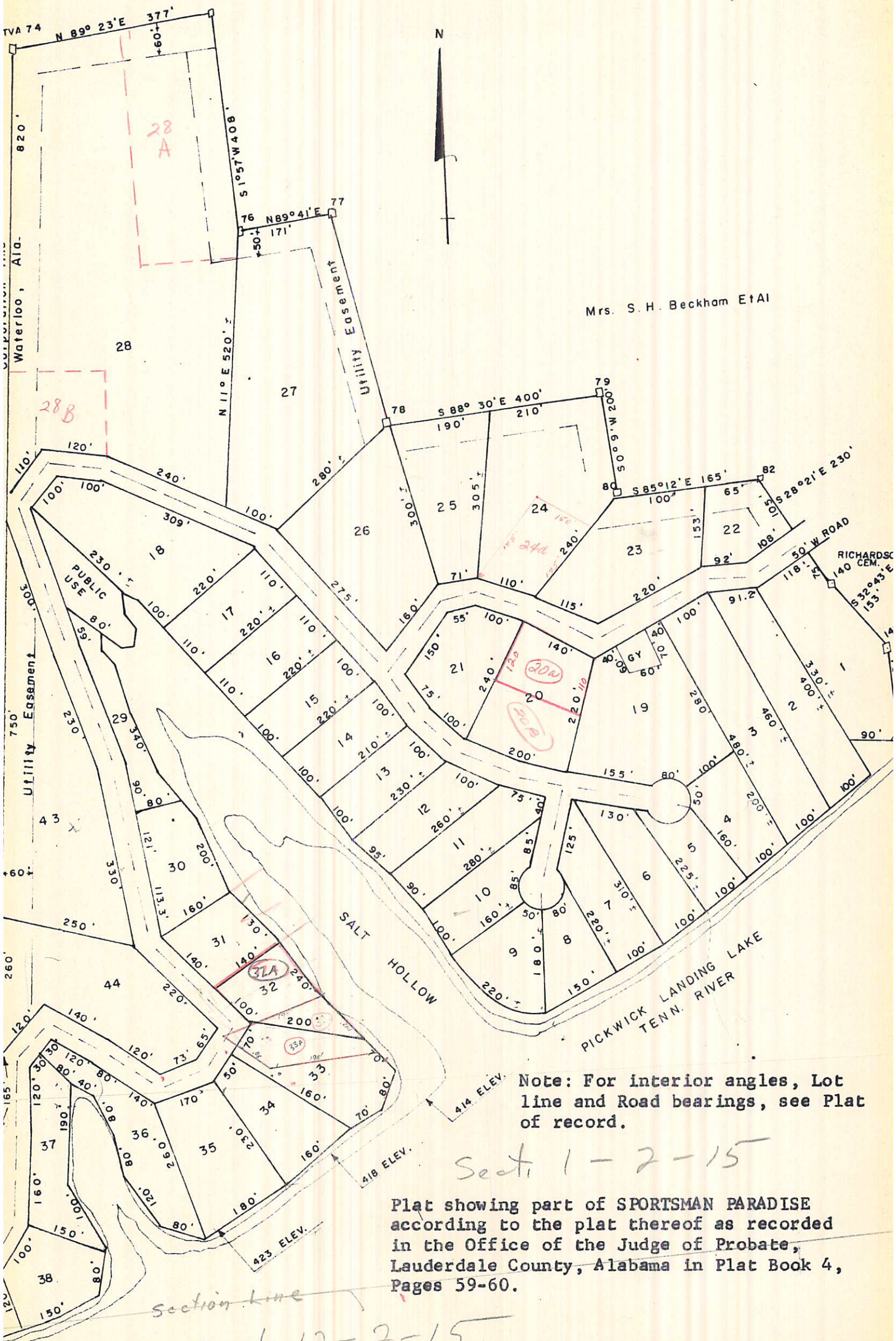






James Scott

TVA 75



Mrs. S. H. Beckham Et Al



Note: For interior angles, Lot line and Road bearings, see Plat of record.

Sect 1-2-15

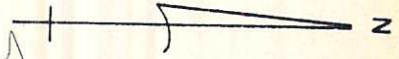
Plat showing part of SPORTSMAN PARADISE according to the plat thereof as recorded in the Office of the Judge of Probate, Lauderdale County, Alabama in Plat Book 4, Pages 59-60.

section line

Sect 12-2-15



Note: For interior angles, Lot line and Road bearings, see Plat of record.



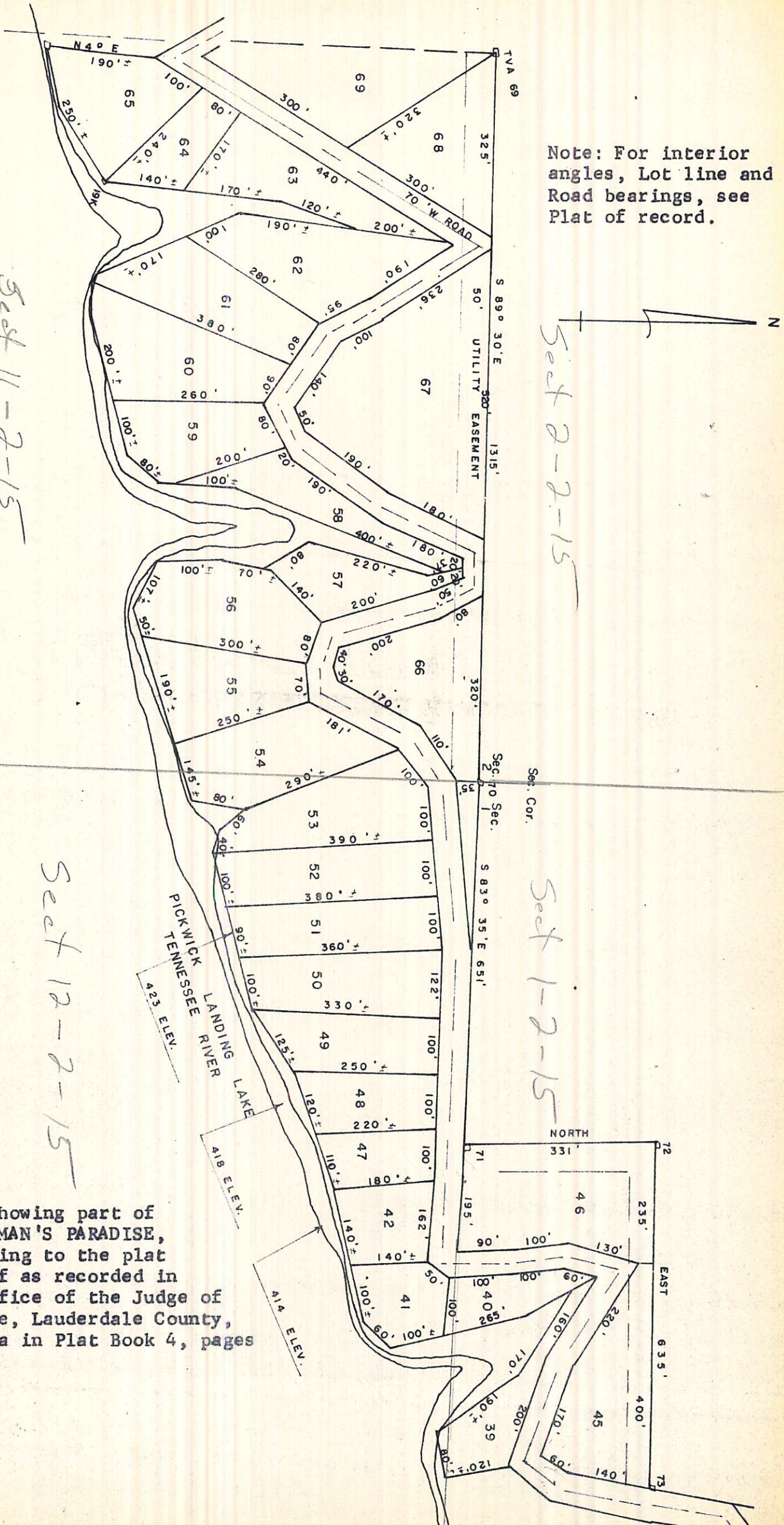
*Set 11-2-15*

*Set 2-2-15*

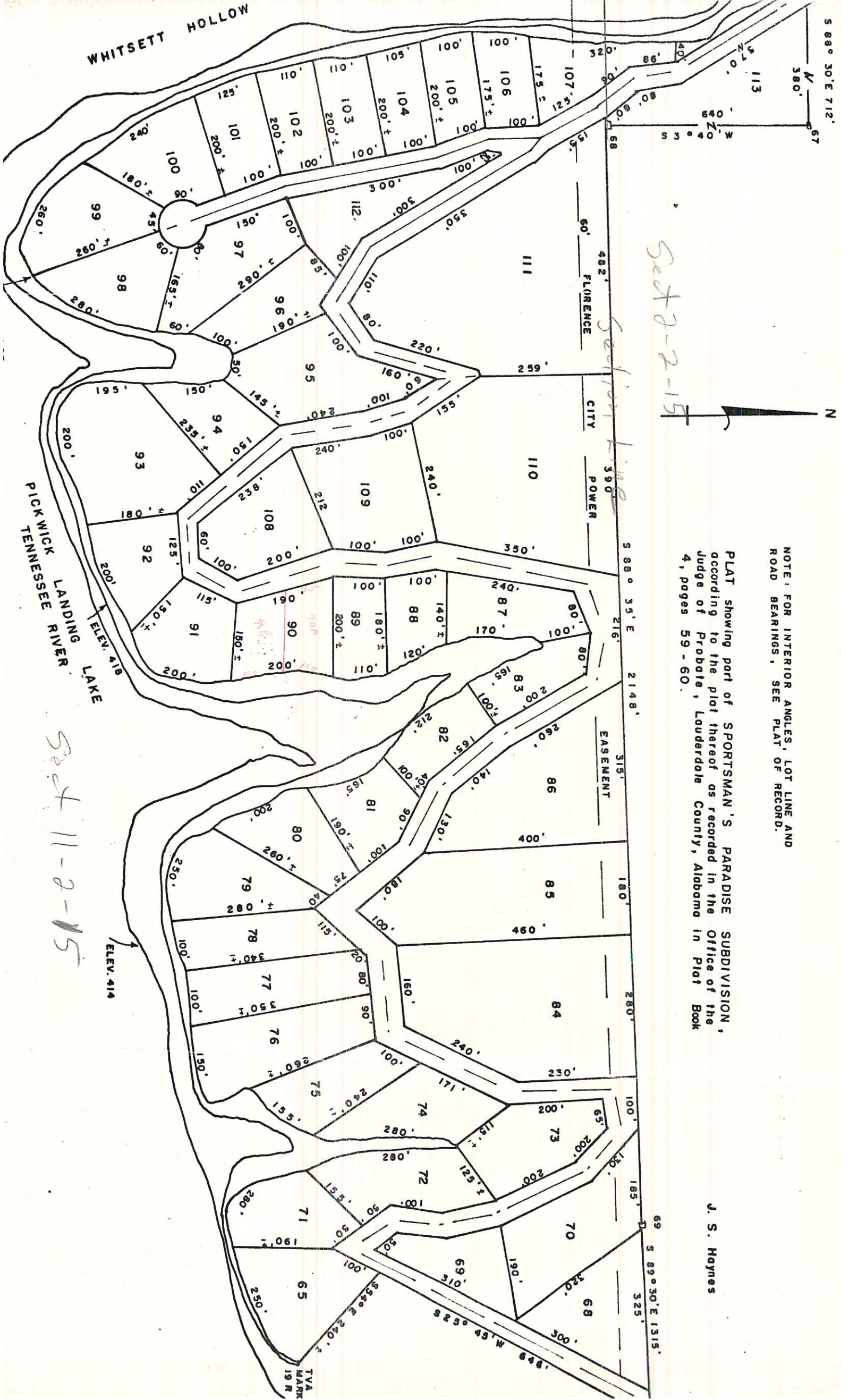
*Set 1-2-15*

*Set 12-2-15*

Plat showing part of SPORTSMAN'S PARADISE, according to the plat thereof as recorded in the Office of the Judge of Probate, Lauderdale County, Alabama in Plat Book 4, pages 59-60.







*Set 2-2-15*

*Set 11-2-15*

PLAT showing part of SPORTSMAN'S PARADISE SUBDIVISION, according to the plat thereof as recorded in the Office of the Judge of Probate, Lauderdale County, Alabama in Plat Book 4, pages 59 - 60.

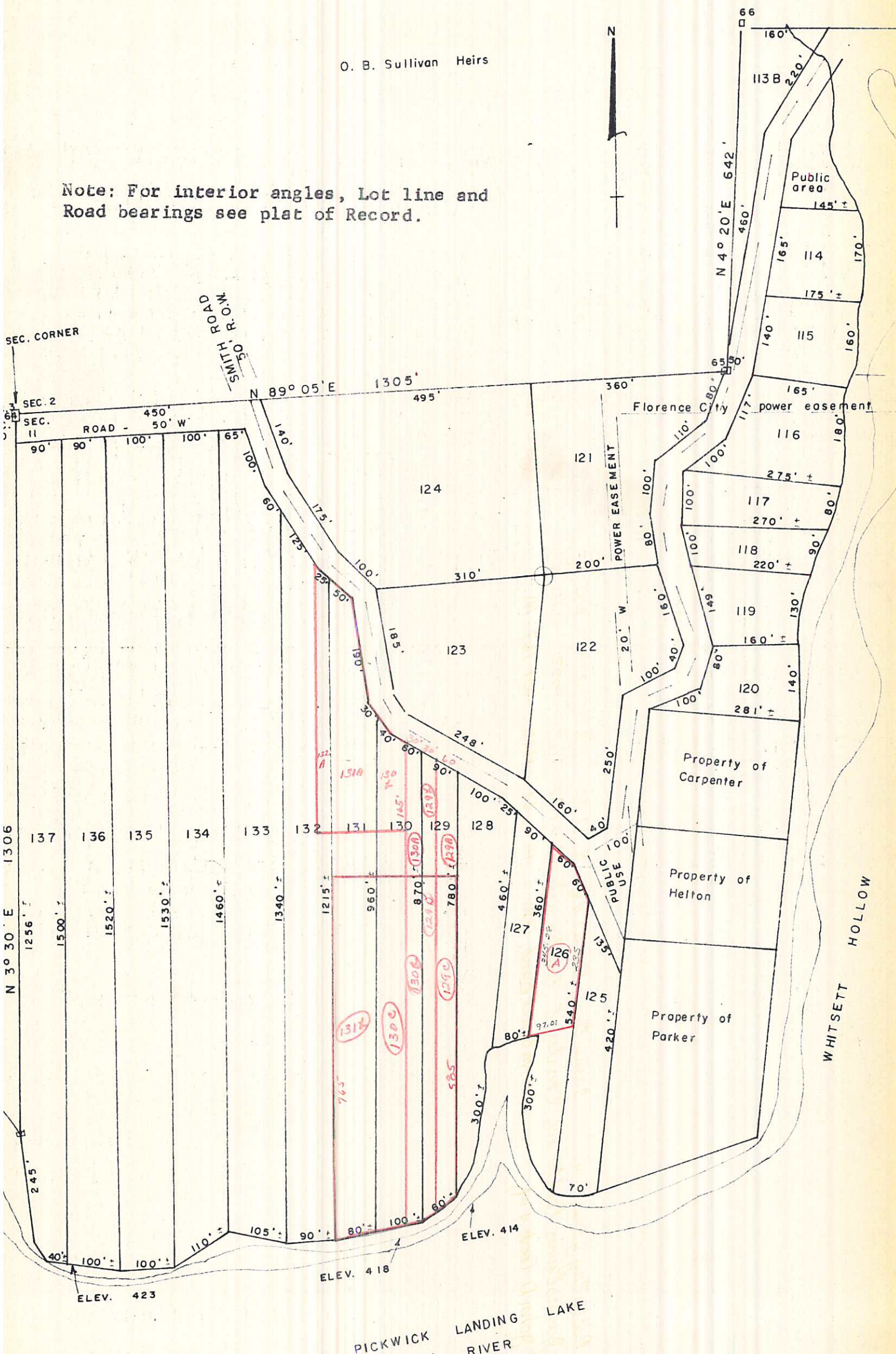
NOTE: FOR INTERIOR ANGLES, LOT LINE AND ROAD BEARINGS, SEE PLAT OF RECORD.

J. S. Hoynes



O. B. Sullivan Heirs

Note: For interior angles, Lot line and Road bearings see plat of Record.



Plat of part of SPORTSMAN PARADISE according to the plat thereof as recorded in the Office of the Judge of Probate, Lauderdale County, Alabama in Plat Book 4, pages 59-60.