

4670 ✓

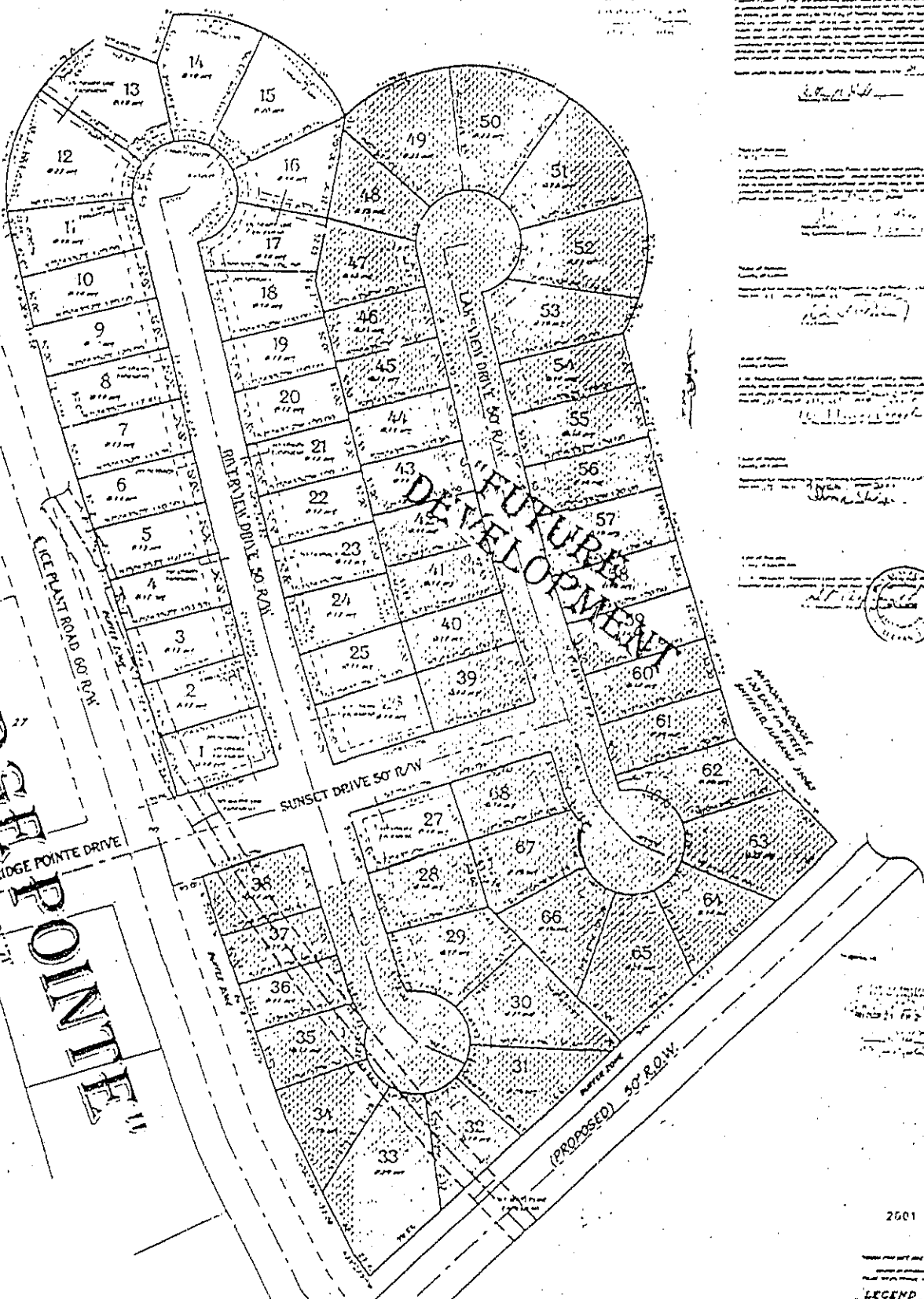
132678

200107/818

"SUNSET POINTE PHASE I"
 IN THE CITY OF SHEFFIELD
 COLBERT COUNTY, ALABAMA
 DEVELOPER: ANTHONY MCDUGLE

R.S. TERRY
 1311 NORTH MONTGOMERY
 SHEFFIELD, ALABAMA 35660
 DEED BOOK 412 PAGE 840

200107/818
 JUL 27 2001
 [Seal]



[Faded text and signatures]

[Seal]

2001 07 218

LEGEND

- Lot boundaries
- Proposed streets
- Proposed easements
- Proposed utility lines
- Proposed drainage
- Proposed landscaping
- Proposed parking
- Proposed signage
- Proposed lighting
- Proposed security
- Proposed maintenance
- Proposed other

ALEXANDER MAPS AND SURVEYING, INC.
 1000 1/2 NORTH MONTGOMERY
 SHEFFIELD, ALABAMA 35660
 PHONE: 205-874-1111
 FAX: 205-874-1112
 WWW.ALEXANDERMAPS.COM

2001 07/818