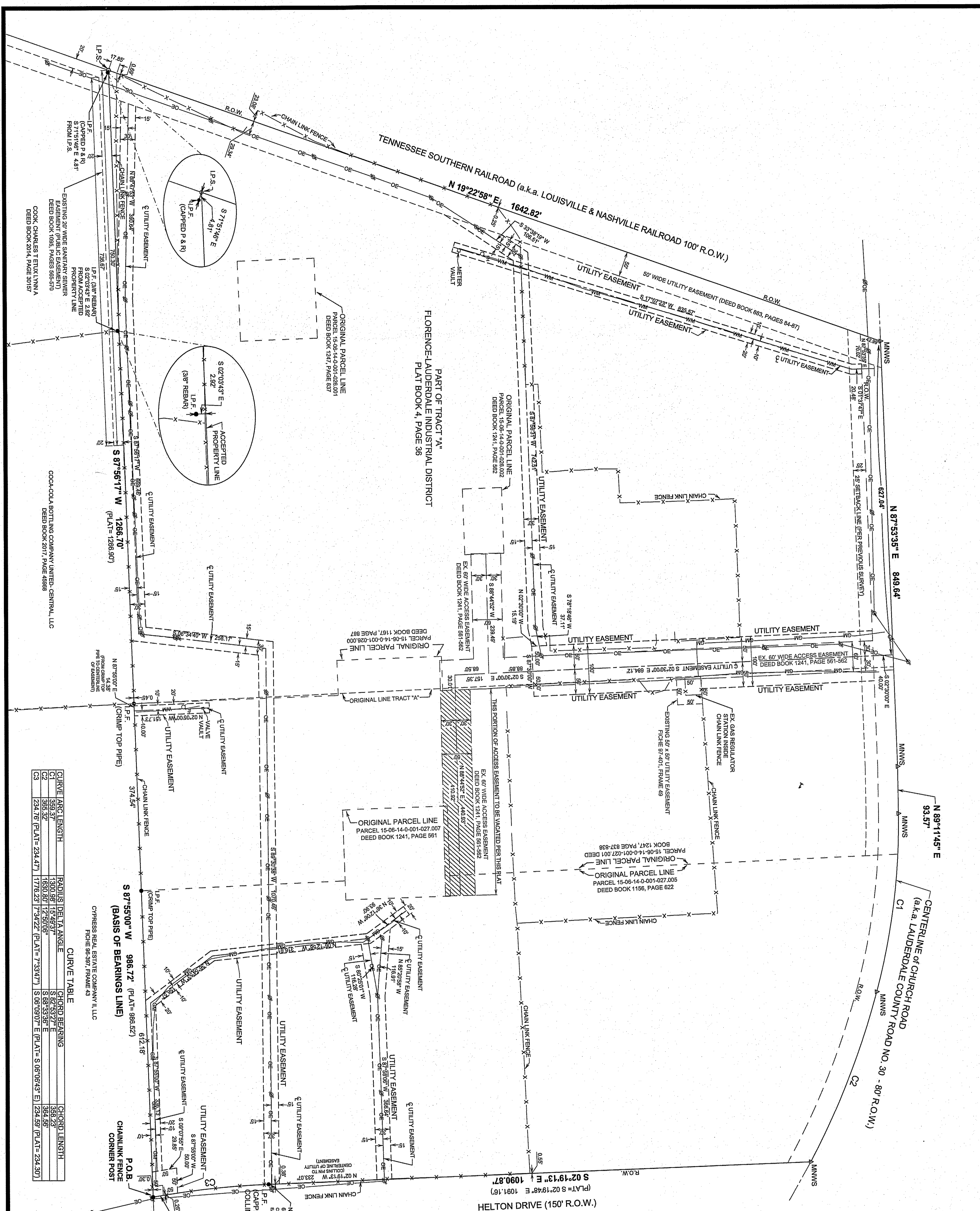


TARGETT INC PROPERTY CONSOLIDATION PLAT



CURVE	ARC LENGTH	RADIUS	DELT. ANGLE	CHORD BEARING	CHORD LENGTH
C1	124.76'	1630.80'	12.5005°	S 87°33'36" E	356.56'
C2	124.76'	1630.80'	12.5005°	S 87°33'36" E	356.56'
C3	124.76'	1630.80'	12.5005°	S 87°33'36" E	356.56'

CURVE	ARC LENGTH	RADIUS	DELT. ANGLE	CHORD BEARING	CHORD LENGTH
C1	124.76'	1630.80'	12.5005°	S 87°33'36" E	356.56'
C2	124.76'	1630.80'	12.5005°	S 87°33'36" E	356.56'
C3	124.76'	1630.80'	12.5005°	S 87°33'36" E	356.56'

CURVE	ARC LENGTH	RADIUS	DELT. ANGLE	CHORD BEARING	CHORD LENGTH
C1	124.76'	1630.80'	12.5005°	S 87°33'36" E	356.56'
C2	124.76'	1630.80'	12.5005°	S 87°33'36" E	356.56'
C3	124.76'	1630.80'	12.5005°	S 87°33'36" E	356.56'

CURVE	ARC LENGTH	RADIUS	DELT. ANGLE	CHORD BEARING	CHORD LENGTH
C1	124.76'	1630.80'	12.5005°	S 87°33'36" E	356.56'
C2	124.76'	1630.80'	12.5005°	S 87°33'36" E	356.56'
C3	124.76'	1630.80'	12.5005°	S 87°33'36" E	356.56'

CURVE	ARC LENGTH	RADIUS	DELT. ANGLE	CHORD BEARING	CHORD LENGTH
C1	124.76'	1630.80'	12.5005°	S 87°33'36" E	356.56'
C2	124.76'	1630.80'	12.5005°	S 87°33'36" E	356.56'
C3	124.76'	1630.80'	12.5005°	S 87°33'36" E	356.56'

CURVE	ARC LENGTH	RADIUS	DELT. ANGLE	CHORD BEARING	CHORD LENGTH
C1	124.76'	1630.80'	12.5005°	S 87°33'36" E	356.56'
C2	124.76'	1630.80'	12.5005°	S 87°33'36" E	356.56'
C3	124.76'	1630.80'	12.5005°	S 87°33'36" E	356.56'

CURVE	ARC LENGTH	RADIUS	DELT. ANGLE	CHORD BEARING	CHORD LENGTH
C1	124.76'	1630.80'	12.5005°	S 87°33'36" E	356.56'
C2	124.76'	1630.80'	12.5005°	S 87°33'36" E	356.56'
C3	124.76'	1630.80'	12.5005°	S 87°33'36" E	356.56'

CURVE	ARC LENGTH	RADIUS	DELT. ANGLE	CHORD BEARING	CHORD LENGTH
C1	124.76'	1630.80'	12.5005°	S 87°33'36" E	356.56'
C2	124.76'	1630.80'	12.5005°	S 87°33'36" E	356.56'
C3	124.76'	1630.80'	12.5005°	S 87°33'36" E	356.56'

CURVE	ARC LENGTH	RADIUS	DELT. ANGLE	CHORD BEARING	CHORD LENGTH
C1	124.76'	1630.80'	12.5005°	S 87°33'36" E	356.56'
C2	124.76'	1630.80'	12.5005°	S 87°33'36" E	356.56'
C3	124.76'	1630.80'	12.5005°	S 87°33'36" E	356.56'

CURVE	ARC LENGTH	RADIUS	DELT. ANGLE	CHORD BEARING	CHORD LENGTH
C1	124.76'	1630.80'	12.5005°	S 87°33'36" E	356.56'
C2	124.76'	1630.80'	12.5005°	S 87°33'36" E	356.56'
C3	124.76'	1630.80'	12.5005°	S 87°33'36" E	356.56'

CURVE	ARC LENGTH	RADIUS	DELT. ANGLE	CHORD BEARING	CHORD LENGTH
C1	124.76'	1630.80'	12.5005°	S 87°33'36" E	356.56'
C2	124.76'	1630.80'	12.5005°	S 87°33'36" E	356.56'
C3	124.76'	1630.80'	12.5005°	S 87°33'36" E	356.56'

CURVE	ARC LENGTH	RADIUS	DELT. ANGLE	CHORD BEARING	CHORD LENGTH
C1	124.76'	1630.80'	12.5005°	S 87°33'36" E	356.56'
C2	124.76'	1630.80'	12.5005°	S 87°33'36" E	356.56'
C3	124.76'	1630.80'	12.5005°	S 87°33'36" E	356.56'

CURVE	ARC LENGTH	RADIUS	DELT. ANGLE	CHORD BEARING	CHORD LENGTH
C1	124.76'	1630.80'	12.5005°	S 87°33'36" E	356.56'
C2	124.76'	1630.80'	12.5005°	S 87°33'36" E	356.56'
C3	124.76'	1630.80'	12.5005°	S 87°33'36" E	356.56'

CURVE	ARC LENGTH	RADIUS	DELT. ANGLE	CHORD BEARING	CHORD LENGTH
C1	124.76'	1630.80'	12.5005°	S 87°33'36" E	356.56'
C2	124.76'	1630.80'	12.5005°	S 87°33'36" E	356.56'
C3	124.76'	1630.80'	12.5005°	S 87°33'36" E	356.56'

CURVE	ARC LENGTH	RADIUS	DELT. ANGLE	CHORD BEARING	CHORD LENGTH
C1	124.76'	1630.80'	12.5005°	S 87°33'36" E	356.56'
C2	124.76'	1630.80'	12.5005°	S 87°33'36" E	356.56'
C3	124.76'	1630.80'	12.5005°	S 87°33'36" E	356.56'

CURVE	ARC LENGTH	RADIUS	DELT. ANGLE	CHORD BEARING	CHORD LENGTH
C1	124.76'	1630.80'	12.5005°	S 87°33'36" E	356.56'
C2	124.76'	1630.80'	12.5005°	S 87°33'36" E	356.56'
C3	124.76'	1630.80'	12.5005°	S 87°33'36" E	356.56'

CURVE	ARC LENGTH	RADIUS	DELT. ANGLE	CHORD BEARING	CHORD LENGTH
C1	124.76'	1630.80'	12.5005°	S 87°33'36" E	356.56'
C2	124.76'	1630.80'	12.5005°	S 87°33'36" E	356.56'
C3	124.76'	1630.80'	12.5005°	S 87°33'36" E	356.56'

CURVE	ARC LENGTH	RADIUS	DELT. ANGLE	CHORD BEARING	CHORD LENGTH
C1	124.76'	1630.80'	12.5005°	S 87°33'36" E	356.56'
C2	124.76'	1630.80'	12.5005°	S 87°33'36" E	356.56'
C3	124.76'	1630.80'	12.5005°	S 87°33'36" E	356.56'

CURVE	ARC LENGTH	RADIUS	DELT. ANGLE	CHORD BEARING	CHORD LENGTH
C1	124.76'	1630.80'	12.5005°	S 87°33'36" E	356.56'
C2	124.76'	1630.80'	12.5005°	S 87°33'36" E	356.56'
C3	124.76'	1630.80'	12.5005°	S 87°33'36" E	356.56'

CURVE	ARC LENGTH	RADIUS	DELT. ANGLE	CHORD BEARING	CHORD LENGTH
C1	124.76'	1630.80'	12.5005°	S 87°33'36" E	356.56'
C2	124.76'	1630.80'	12.5005°	S 87°33'36" E	356.56'
C3	124.76'	1630.80'	12.5005°	S 87°33'36" E	356.56'

CURVE	ARC LENGTH	RADIUS	DELT. ANGLE	CHORD BEARING	CHORD LENGTH
C1	124.76'	1630.80'	12.5005°	S 87°33'36" E	356.56'
C2	124.76'	1630.80'	12.5005°	S 87°33'36" E	356.56'
C3	124.76'	1630.80'	12.5005°	S 87°33'36" E	356.56'

DESCRIPTION
A tract of land being a part of the Northwest 1/4 of the Southeast 1/4 of the Southeast 1/4 of Section 14, the Southwest 1/4 of the Northwest 1/4, and the Southwest 1/4 of the Northeast 1/4 of Section 14, Township 11 North, Range 11 West, Lauderdale County, Alabama, as shown on the plat hereto recorded in Plat Book 4, Page 38, at the Office of the Judge of Probate, Lauderdale County, Alabama, and being more particularly described as follows:

Commence at Southeast corner of the Northwest 1/4 of the Southeast 1/4 of said Section 14; thence run North 02°30'00" West a distance of 1074.03 feet to a point in the center of the chain link fence corner of the Southeast 1/4 of the Northwest 1/4 of the Southeast 1/4 of said Section 14; thence run South 87°33'36" East a distance of 356.56 feet to an iron pin found (top pipe) on the East line of aforementioned Tract 'A' of said Florence-Lauderdale Industrial District; thence run South 87°33'36" East a distance of 1265.70 feet to an iron pin set (capped typical P.L.S. 33944) on the East right of way line of Tennessee Southern Railroad (a.k.a. Louisville & Nashville Railroad 100 foot right of way); thence run with said right of way, North 19°22'58" East a distance of 1642.82 feet to a mag nail and washer set (stamped typical P.L.S. 33944) in the centerline of Church Road (a.k.a. Lauderdale County Road No. 30 - 80' R.O.W.) thence run with said centerline of Church Road, North 06°09'07" East, with a chord length of 234.59 feet to the point of beginning; thence run along said centerline, North 06°11'42" East a distance of 53.57 feet to a mag nail and washer set; thence run along said centerline with a curve turning to the right with an arc length of 359.37 feet, with a radius of 1300.98 feet, with a chord bearing of South 82°53'27" East, with a chord length of 358.23 feet to a mag nail and washer set; thence run along said centerline with a curve turning to the right with an arc length of 358.32 feet, with a radius of 1630.80 feet, with a chord bearing of South 68°33'36" East, with a chord length of 354.36 feet to a mag nail and washer set; thence run along said centerline with a curve turning to the right with an arc length of 358.32 feet, with a radius of 1630.80 feet, with a chord bearing of South 68°33'36" East, with a chord length of 354.36 feet to a mag nail and washer set; thence run along said centerline with a curve turning to the left with an arc length of 1000.87 feet to an iron pin found (capped Collins 13406); thence run with said right of way with a curve turning to the left with an arc length of 224.76 feet, with a radius of 1776.23 feet, with a chord bearing of South 06°09'07" East, with a chord length of 234.59 feet to the point of beginning.

Said tract of land contains 88.30 acres, more or less, and is subject to the right of way for Church Road along the North side thereof, and any existing right of way easements, or restrictions affecting said tract.

PLAT NOTES
1. PROPERTY IS CURRENTLY ZONED L-1 LIGHT INDUSTRIAL.
2. THE PROPERTY BOUNDARY BEARING SHOWN IS THE PROPERTY BOUNDARY BEARING NOT SHOWN.
3. THE PURPOSE OF THIS PLAT IS TO CONSOLIDATE LAUDERDALE COUNTY TAX PARCELS:
15-08-14-0-001-026-000
15-08-14-0-001-026-001
15-08-14-0-001-026-002
15-08-14-0-001-027-001
15-08-14-0-001-027-002
15-08-14-0-001-027-003
15-08-14-0-001-027-004
15-08-14-0-001-027-005
15-08-14-0-001-027-006
15-08-14-0-001-027-007
15-08-14-0-001-027-008
15-08-14-0-001-027-009
15-08-14-0-001-027-010
15-08-14-0-001-027-011
15-08-14-0-001-027-012
15-08-14-0-001-027-013
15-08-14-0-001-027-014
15-08-14-0-001-027-015
15-08-14-0-001-027-016
15-08-14-0-001-027-017
15-08-14-0-001-027-018
15-08-14-0-001-027-019
15-08-14-0-001-027-020
15-08-14-0-001-027-021
15-08-14-0-001-027-022
15-08-14-0-001-027-023
15-08-14-0-001-027-024
15-08-14-0-001-027-025
15-08-14-0-001-027-026
15-08-14-0-001-027-027
15-08-14-0-001-027-028
15-08-14-0-001-027-029
15-08-14-0-001-027-030
15-08-14-0-001-027-031
15-08-14-0-001-027-032
15-08-14-0-001-027-033
15-08-14-0-001-027-034
15-08-14-0-001-027-035
15-08-14-0-001-027-036
15-08-14-0-001-027-037
15-08-14-0-001-027-038
15-08-14-0-001-027-039
15-08-14-0-001-027-040
15-08-14-0-001-027-041
15-08-14-0-001-027-042
15-08-14-0-001-027-043
15-08-14-0-001-027-044
15-08-14-0-001-027-045
15-08-14-0-001-027-046
15-08-14-0-001-027-047
15-08-14-0-001-027-048
15-08-14-0-001-027-049
15-08-14-0-001-027-050
15-08-14-0-001-027-051
15-08-14-0-001-027-052
15-08-14-0-001-027-053
15-08-14-0-001-027-054
15-08-14-0-001-027-055
15-08-14-0-001-027-056
15-08-14-0-001-027-057
15-08-14-0-001-027-058
15-08-14-0-001-027-059
15-08-14-0-001-027-060
15-08-14-0-001-027-061
15-08-14-0-001-027-062
15-08-14-0-001-027-063
15-08-14-0-001-027-064
15-08-14-0-001-027-065
15-08-14-0-001-027-066
15-08-14-0-001-027-067
15-08-14-0-001-027-068
15-08-14-0-001-027-069
15-08-14-0-001-027-070
15-08-14-0-001-027-071
15-08-14-0-001-027-072
15-08-14-0-001-027-073
15-08-14-0-001-027-074
15-08-14-0-001-027-075
15-08-14-0-001-027-076
15-08-14-0-001-027-077
15-08-14-0-001-027-078
15-08-14-0-001-027-079
15-08-14-0-001-027-080
15-08-14-0-001-027-081
15-08-14-0-001-027-082
15-08-14-0-001-027-083
15-08-14-0-001-027-084
15-08-14-0-001-027-085
15-08-14-0-001-027-086
15-08-14-0-001-027-087
15-08-14-0-001-027-088
15-08-14-0-001-027-089
15-08-14-0-001-027-090
15-08-14-0-001-027-091
15-08-14-0-001-027-092
15-08-14-0-001-027-093
15-08-14-0-001-027-094
15-08-14-0-001-027-095
15-08-14-0-001-027-096
15-08-14-0-001-027-097
15-08-14-0-001-027-098
15-08-14-0-001-027-099
15-08-14-0-001-027-100
15-08-14-0-001-027-101
15-08-14-0-001-027-102
15-08-14-0-001-027-103
15-08-14-0-001-027-104
15-08-14-0-001-027-105
15-08-14-0-001-027-106
15-08-14-0-001-027-107
15-08-14-0-001-027-108
15-08-14-0-001-027-109
15-08-14-0-001-027-110
15-08-14-0-001-027-111
15-08-14-0-001-027-112
15-08-14-0-001-027-113
15-08-14-0-001-027-114
15-08-14-0-001-027-115
15-08-14-0-001-027-116
15-08-14-0-001-027-117
15-08-14-0-001-027-118
15-08-14-0-001-027-119
15-08-14-0-001-027-120
15-08-14-0-001-027-121
15-08-14-0-001-027-122
15-08-14-0-001-027-123
15-08-14-0-001-027-124
15-08-14-0-001-027-125
15-08-14-0-001-027-126
15-08-14-0-001-027-127
15-08-14-0-001-027-128
15-08-14-0-001-027-129
15-08-14-0-001-027-130
15-08-14-0-001-027-131
15-08-14-0-001-027-132
15-08-14-0-001-027-133
15-08-14-0-001-027-134
15-08-14-0-001-027-135
15-08-14-0-001-027-136
15-08-14-0-001-027-137
15-08-14-0-001-027-138
15-08-14-0-001-027-139
15-08-14-0-001-027-140
15-08-14-0-001-027-141
15-08-14-0-001-027-142
15-08-14-0-001-027-143
15-08-14-0-001-027-144
15-08-14-0-001-027-145
15-08-14