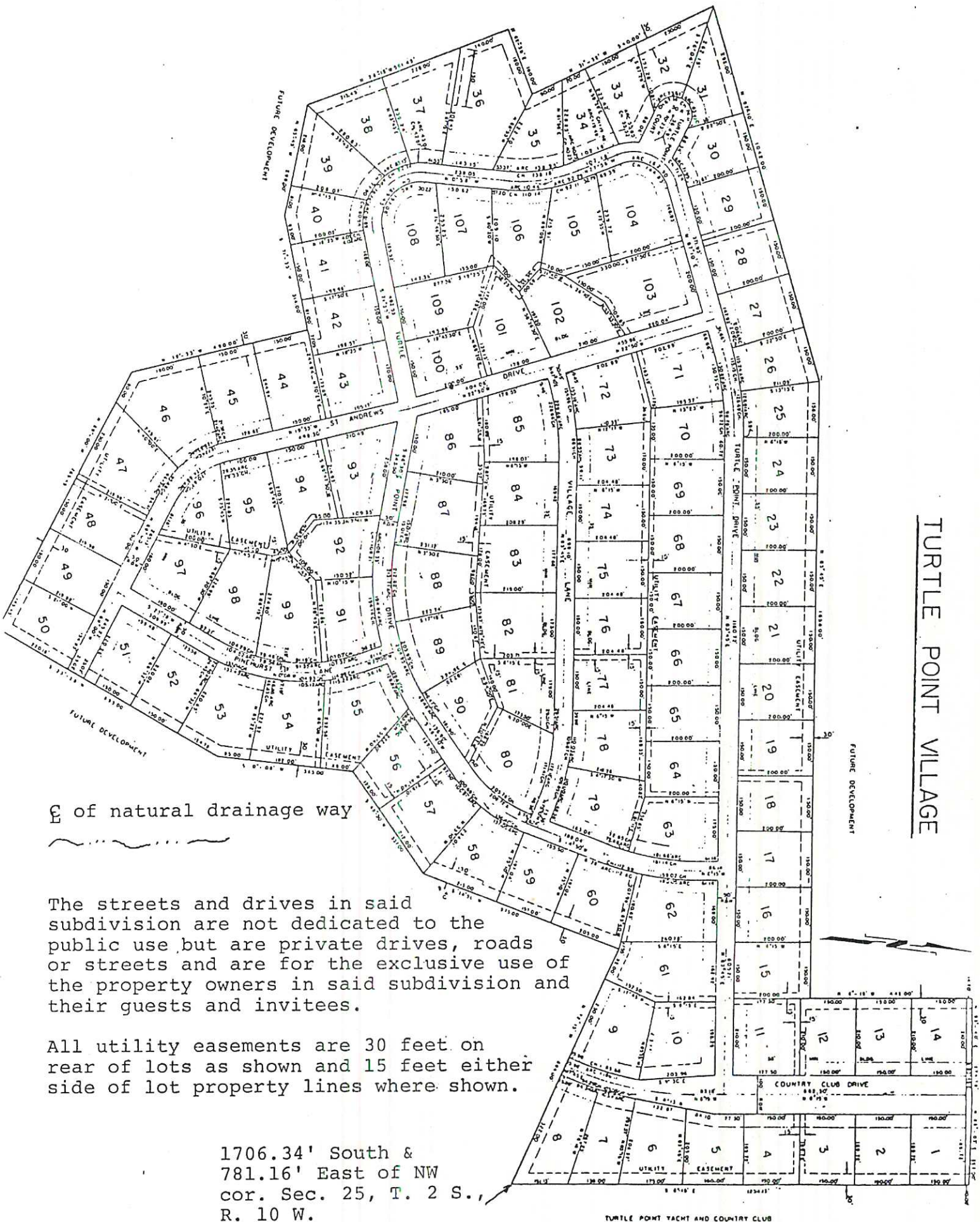


TURTLE POINT VILLAGE



of natural drainage way

The streets and drives in said subdivision are not dedicated to the public use but are private drives, roads or streets and are for the exclusive use of the property owners in said subdivision and their guests and invitees.

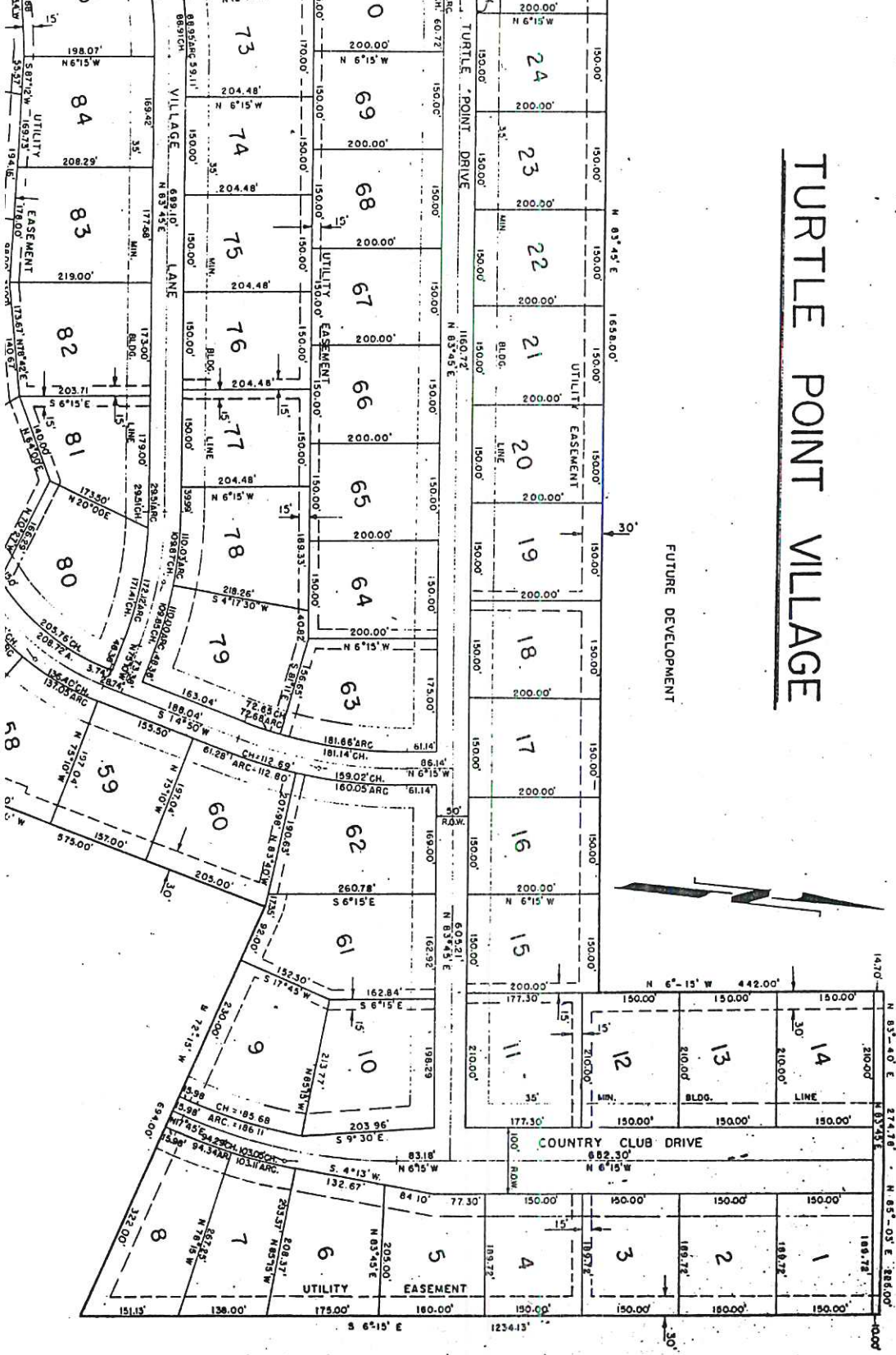
All utility easements are 30 feet on rear of lots as shown and 15 feet either side of lot property lines where shown.

1706.34' South &
781.16' East of NW
cor. Sec. 25, T. 2 S.,
R. 10 W.

TURTLE POINT YACHT AND COUNTRY CLUB

NOTE: Plat showing at reduced scale Turtle Point Village, according to the plat thereof recorded in the Office of the Judge of Probate of Lauderdale County, Alabama, in Plat Book 5, Page 43.

TURTLE POINT VILLAGE



TURTLE POINT YACHT AND COUNTRY CLUB

US HIGHWAY NO. 72

TURTLE POINT VILLAGE

FUTURE DEVELOPMENT

