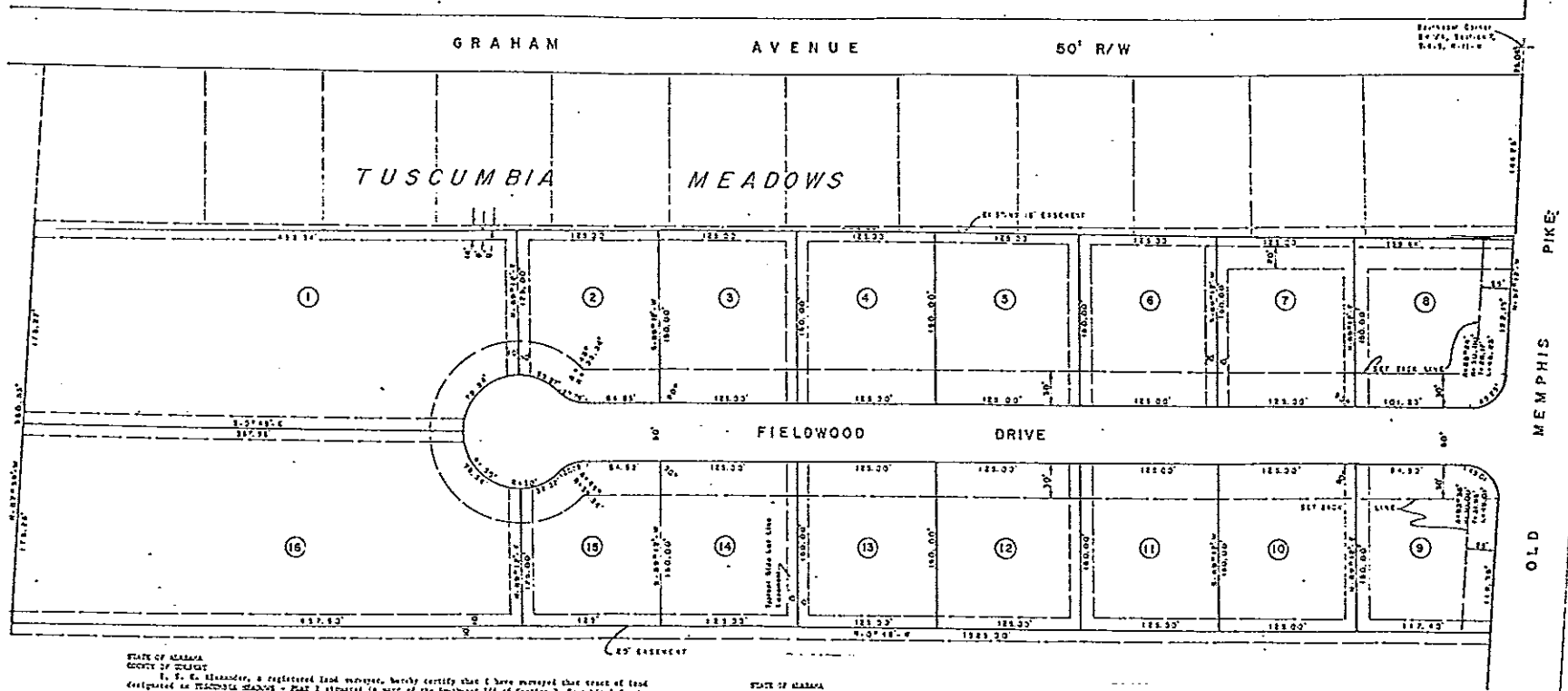


TUSCUMBIA MEADOWS -- PLAT 2
 BEING PART OF THE SW 1/4 OF SECTION 7, T-4-S, R-11-W
 TUSCUMBIA, ALABAMA

9322
 Cabinet C
 Slr 41
 9322
 P.M. 655
 9-22-65



STATE OF ALABAMA
 COUNTY OF COLBERT
 I, S. C. Alexander, a registered land surveyor, hereby certify that I have surveyed the tract of land designated as TUSCUMBIA MEADOWS -- PLAT 2 situated in part of the Southwest 1/4 of Section 7, Township 4 South, Range 11 West, Colbert County, Alabama that I have subdivided said tract of land into lots, giving the bearing and length, or length of each lot line as appropriate and have shown the streets and easements thereon, giving the correct location and width of each that the attached plat is a true and correct plat of said subdivision and show the correct relationship to the U. S. Government Survey of public lands in the State of Alabama. This the 22nd day of September, 1955.

S. C. Alexander, Registered Land Surveyor
 Alabama Certificate No. 2258

STATE OF ALABAMA
 COUNTY OF COLBERT
 We, the undersigned, John R. Justice and wife, Theres L. Justice, owners of the property shown herein and in subdivision of the respective benefits to accrue to us, our successors and assigns, as evidence of right of way over, under, across and above the streets and alleys shown herein for electric, telephone, gas and sewer lines and also for such purposes, rights of way ten feet wide on either side of each side necessary for the construction and maintenance of such utilities over the right of way including the right to cut and clear trees or parts thereof or other objects that may fall, or an adequate overhead line, when a tract is comprised of several lots or part of a lot, or parts of several lots, where the phrase "over lot lines" is used herein, the same shall be construed to mean the property ownership lines, unless the utility easement or easements along said lot lines has been utilized by a Utility Department. Given under our hands at Tuscomb, Alabama, this the 22nd day of September, 1955.

John R. Justice and wife Theres L. Justice
 Theres L. Justice

STATE OF ALABAMA
 COUNTY OF COLBERT
 I, the undersigned, a notary public in and for said State, hereby certify that John R. Justice and wife, Theres L. Justice, whose names are signed to the foregoing plat, declaration and certificate, and who are known to me, acknowledged before me on this day that, being informed of the contents of the plat, declaration and certificate, they executed the same voluntarily on the day the above bears date. Given under my hand and seal, this the 22nd day of September, 1955.

Notary Public
 S. C. Alexander

STATE OF ALABAMA
 COUNTY OF COLBERT
 APPROVED for recording by the North Alabama Regional Health Department, Colbert County, Alabama.
 This the 22nd day of September, 1955.

Director Health Officer

STATE OF ALABAMA
 COUNTY OF COLBERT
 APPROVED for recording by the Planning Commission of the City of Tuscomb, Alabama.
 This the 22nd day of September, 1955.

City Planning Commission

STATE OF ALABAMA
 COUNTY OF COLBERT
 APPROVED for recording by the Mayor of the City of Tuscomb, Alabama.
 This the 22nd day of September, 1955.

Mayor

STATE OF ALABAMA
 COUNTY OF COLBERT
 I, W. Thomas Crossley, Notary Public, Colbert County, Alabama, hereby certify that the attached plat of TUSCUMBIA MEADOWS -- PLAT 2 was duly filed in the office of the Probate Judge of Colbert County, Alabama, in the Office of the Probate Judge of Colbert County, Alabama, this the 22nd day of September, 1955.

W. Thomas Crossley, Notary Public
 Colbert County, Alabama

NOTES: The survey and plat of the subdivision shown herein, have been completed in accordance with the International Standards for the Practice of Land Surveying in the State of Alabama.

S. C. Alexander, P.L.S.
 Alabama Certificate Number 2258

ALEXANDER MAPS AND SURVEYS, INC.			
4028 NORTH 27th STREET, BIRMINGHAM, ALABAMA 35202			
Scale: 1" = 20'	Unrevised by: S.C.A.	Drawn by: S.C.A.	Checked by: S.C.A.
Date: 9/22/55	Approved by: S.C.A.	Printed by: S.C.A.	
Sheet No. 4			4