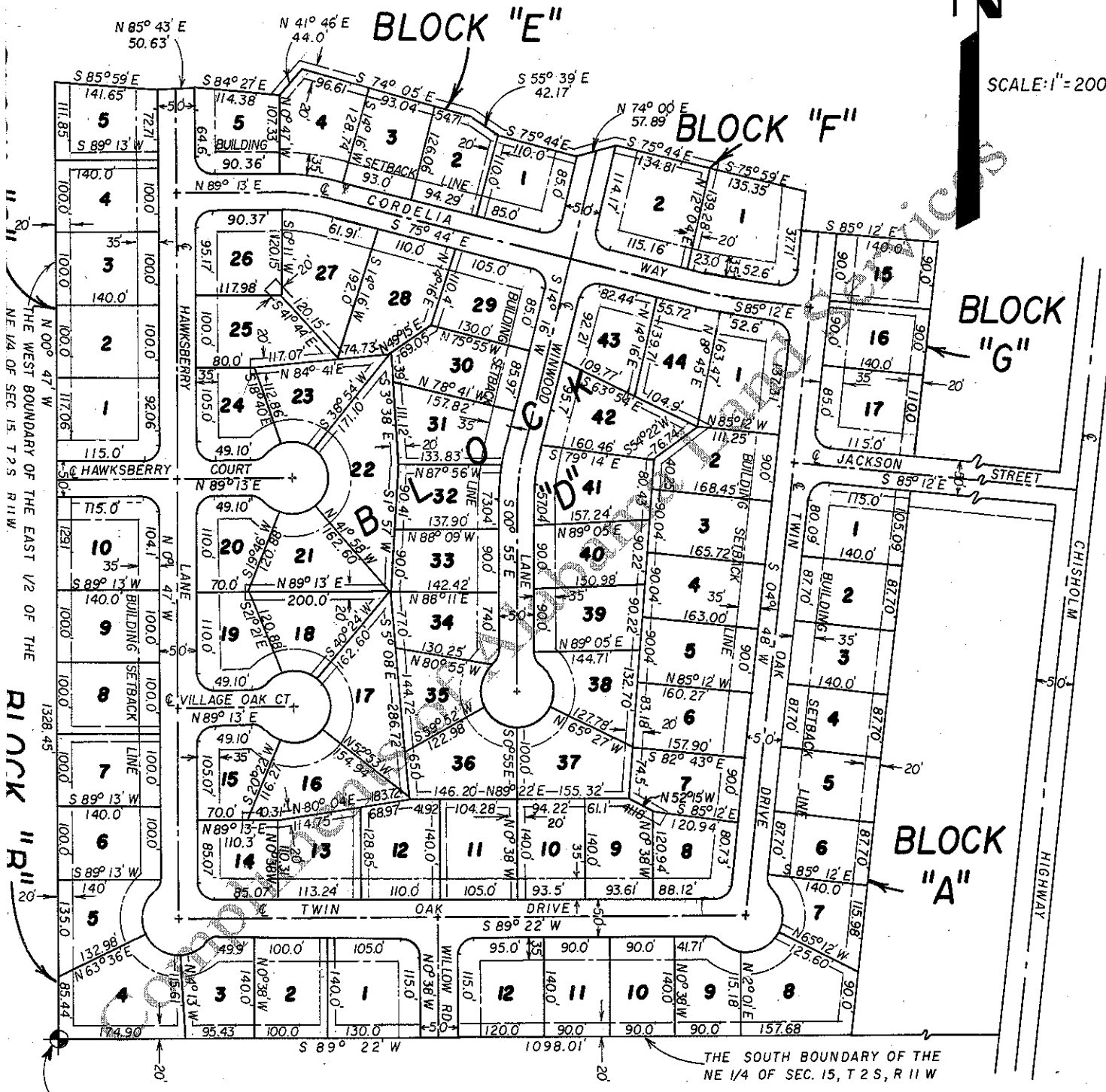




SCALE: 1" = 200'



THE WEST BOUNDARY OF THE EAST 1/2 OF THE NE 1/4 OF SEC. 15, T 2 S, R 11 W.

THE SOUTH BOUNDARY OF THE NE 1/4 OF SEC. 15, T 2 S, R 11 W

SW COR. OF THE SE 1/4 OF THE NE 1/4 OF SEC. 15, T 2 S, R 11 W.

NOTE: SEE RECORDED PLAT FOR CURVE AND TANGENT DATA.

Plat showing, at reduced scale, TWIN OAK SUBDIVISION, according to the plat thereof recorded in the Office of the Judge of Probate of Lauderdale County, Alabama, in Plat Book 5, at Page 35.