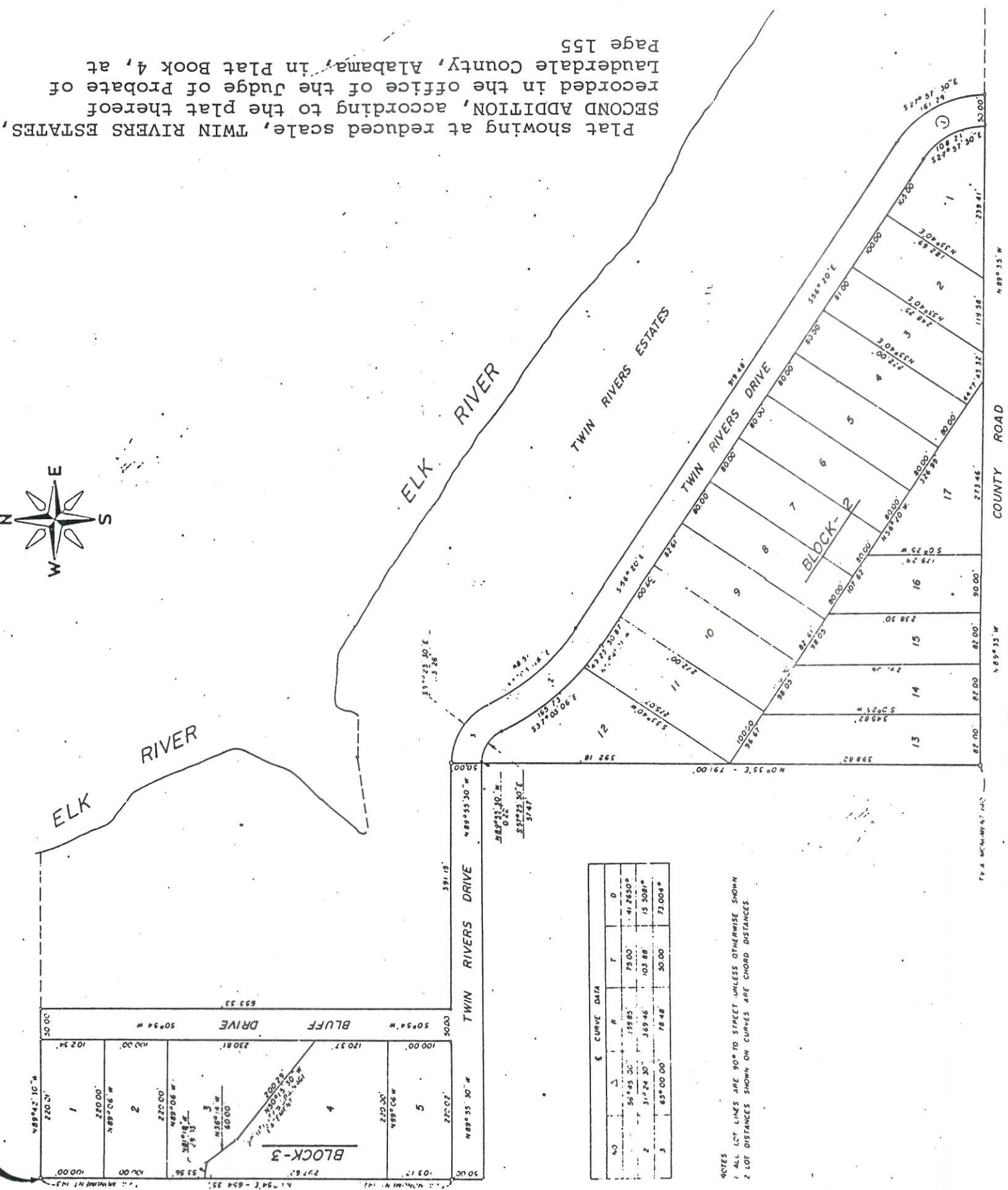




S.E. 1/4 OF THE S.W. 1/4 OF SEC 21-135-87N



CURVE DATA				
NO	Δ	R	T	D
1	56°45'30"	11880'	75.00'	41.2650*
2	31°24'30"	369.46'	103.88'	15.3081*
3	65°00'00"	16.48'	50.00'	73.004*

NOTES
 1 ALL LOT LINES ARE 90° TO STREET UNLESS OTHERWISE SHOWN
 2 LOT DISTANCES SHOWN ON CURVES ARE CHORD DISTANCES.

Plat showing at reduced scale, TWIN RIVERS ESTATES, SECOND ADDITION, according to the plat thereof recorded in the office of the Judge of Probate of Lauderdale County, Alabama, in Plat Book 4, at Page 155